



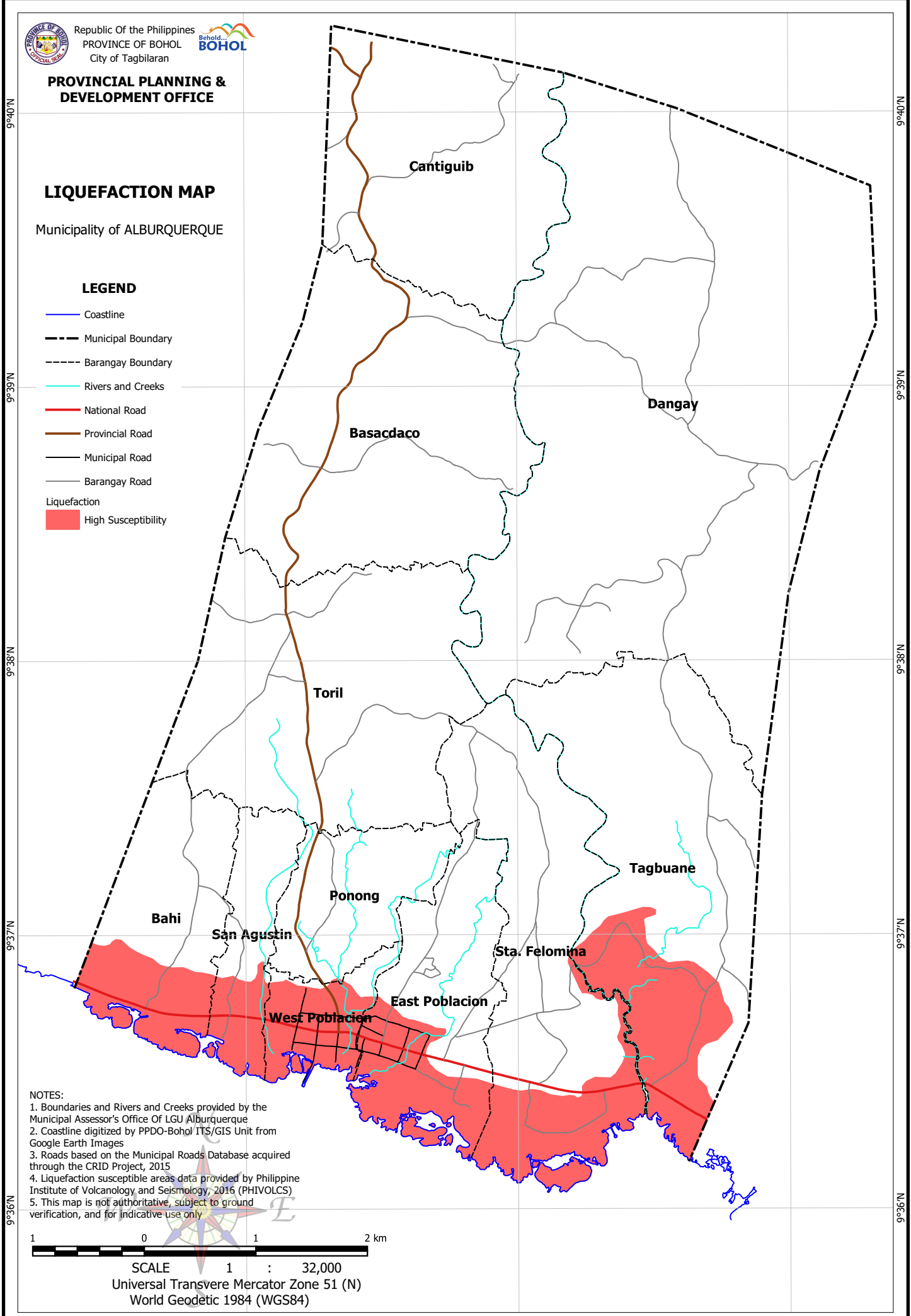
**PROVINCIAL PLANNING &
 DEVELOPMENT OFFICE**

LIQUEFACTION MAP

Municipality of ALBURQUERQUE

LEGEND

- Coastline
- Municipal Boundary
- Barangay Boundary
- Rivers and Creeks
- National Road
- Provincial Road
- Municipal Road
- Barangay Road
- Liquefaction**
- High Susceptibility



NOTES:

1. Boundaries and Rivers and Creeks provided by the Municipal Assessor's Office Of LGU Alburquerque
2. Coastline digitized by PPDO-Bohol/ ITS/GIS Unit from Google Earth Images
3. Roads based on the Municipal Roads Database acquired through the CRID Project, 2015
4. Liquefaction susceptible areas data provided by Philippine Institute of Volcanology and Seismology, 2016 (PHIVOLCS)
5. This map is not authoritative, subject to ground verification, and for indicative use only



SCALE 1 : 32,000
 Universal Transverse Mercator Zone 51 (N)
 World Geodetic 1984 (WGS84)

123°57'E

123°58'E

123°59'E

9°40'N
9°39'N
9°38'N
9°37'N
9°36'N

9°40'N
9°39'N
9°38'N
9°37'N
9°36'N