



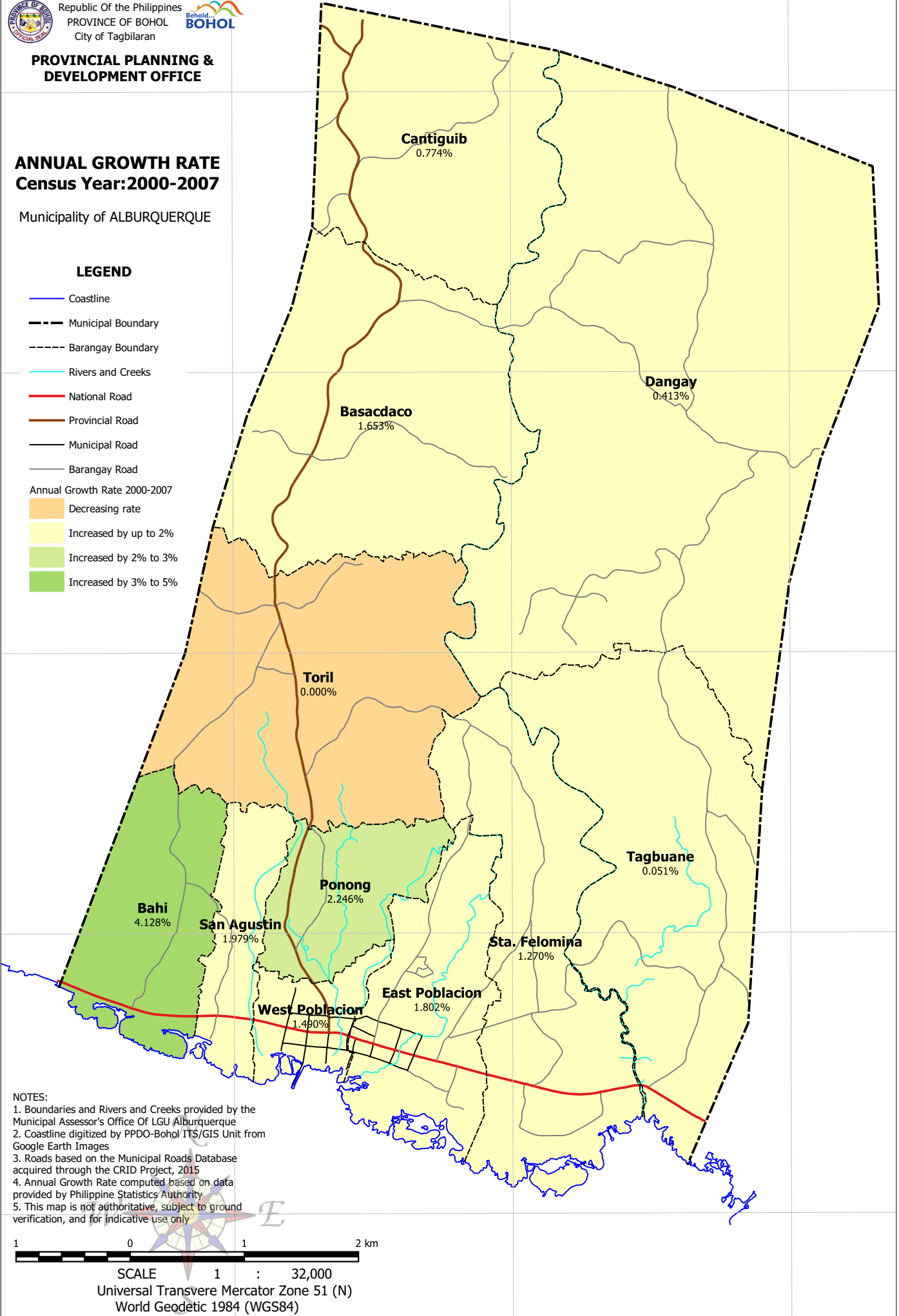
**PROVINCIAL PLANNING &
 DEVELOPMENT OFFICE**

**ANNUAL GROWTH RATE
 Census Year: 2000-2007**

Municipality of ALBURQUERQUE

LEGEND

- Coastline
- Municipal Boundary
- Barangay Boundary
- Rivers and Creeks
- National Road
- Provincial Road
- Municipal Road
- Barangay Road
- Annual Growth Rate 2000-2007
 - Decreasing rate
 - Increased by up to 2%
 - Increased by 2% to 3%
 - Increased by 3% to 5%



NOTES:

1. Boundaries and Rivers and Creeks provided by the Municipal Assessor's Office Of LGU Alburquerque
2. Coastline digitized by PPDO-Bohol/ ITS/GIS Unit from Google Earth Images
3. Roads based on the Municipal Roads Database acquired through the CRID Project, 2015
4. Annual Growth Rate computed based on data provided by Philippine Statistics Authority
5. This map is not authoritative, subject to ground verification, and for indicative use only



SCALE 1 : 32,000
 Universal Transverse Mercator Zone 51 (N)
 World Geodetic 1984 (WGS84)

123°57'E

123°58'E

123°59'E

9°40'N

9°40'N

9°39'N

9°39'N

9°38'N

9°38'N

9°37'N

9°37'N

9°36'N

9°36'N