



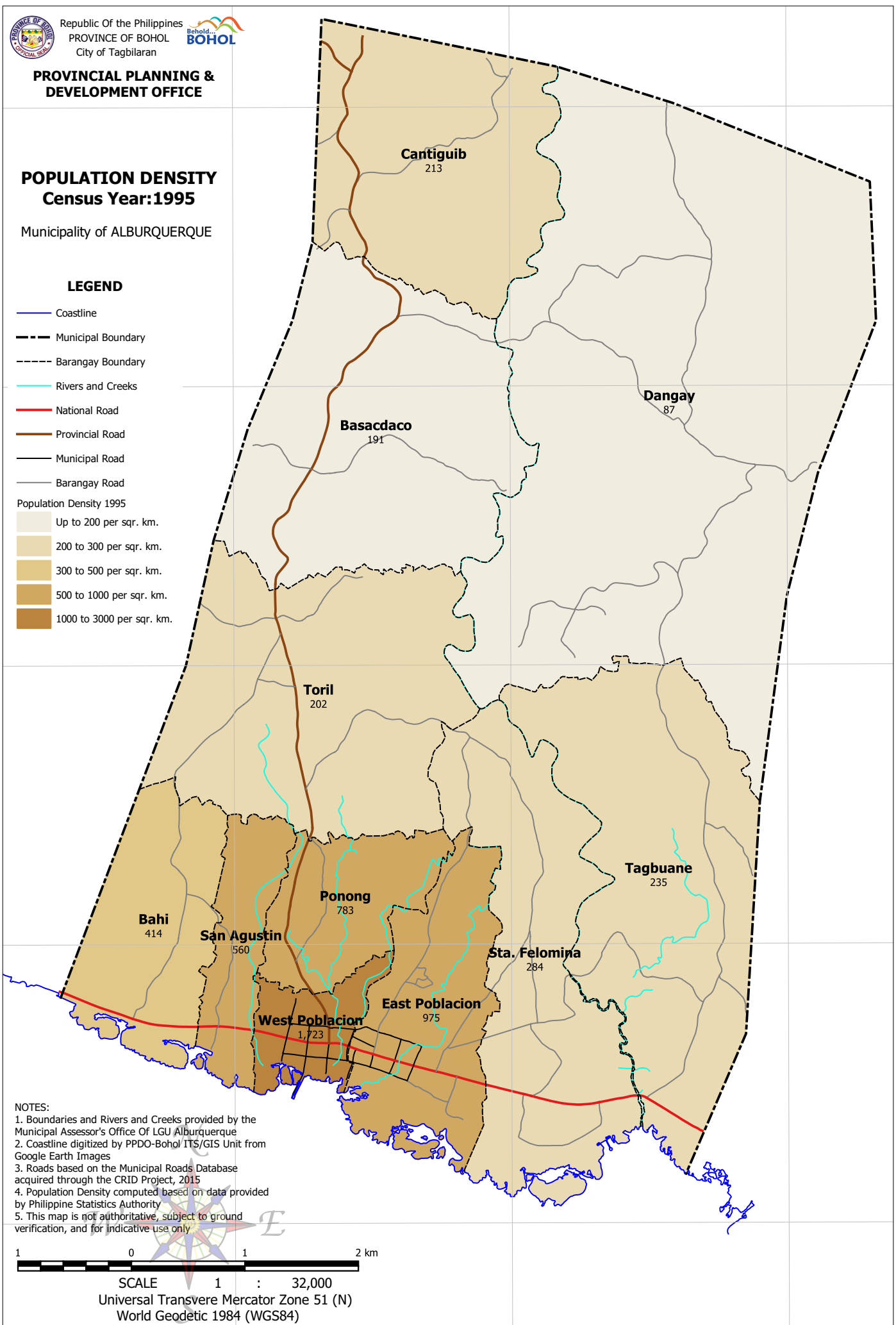
**PROVINCIAL PLANNING &
 DEVELOPMENT OFFICE**

**POPULATION DENSITY
 Census Year: 1995**

Municipality of ALBURQUERQUE

LEGEND

- Coastline
 - Municipal Boundary
 - Barangay Boundary
 - Rivers and Creeks
 - National Road
 - Provincial Road
 - Municipal Road
 - Barangay Road
- Population Density 1995
- Up to 200 per sqr. km.
 - 200 to 300 per sqr. km.
 - 300 to 500 per sqr. km.
 - 500 to 1000 per sqr. km.
 - 1000 to 3000 per sqr. km.



NOTES:

1. Boundaries and Rivers and Creeks provided by the Municipal Assessor's Office Of LGU Alburquerque
2. Coastline digitized by PPDO-Bohol/ ITS/GIS Unit from Google Earth Images
3. Roads based on the Municipal Roads Database acquired through the CRID Project, 2015
4. Population Density computed based on data provided by Philippine Statistics Authority
5. This map is not authoritative, subject to ground verification, and for indicative use only



SCALE 1 : 32,000
 Universal Transverse Mercator Zone 51 (N)
 World Geodetic 1984 (WGS84)

123°57'E

123°58'E

123°59'E

9°40'N

9°40'N

9°39'N

9°39'N

9°38'N

9°38'N

9°37'N

9°37'N

9°36'N

9°36'N