



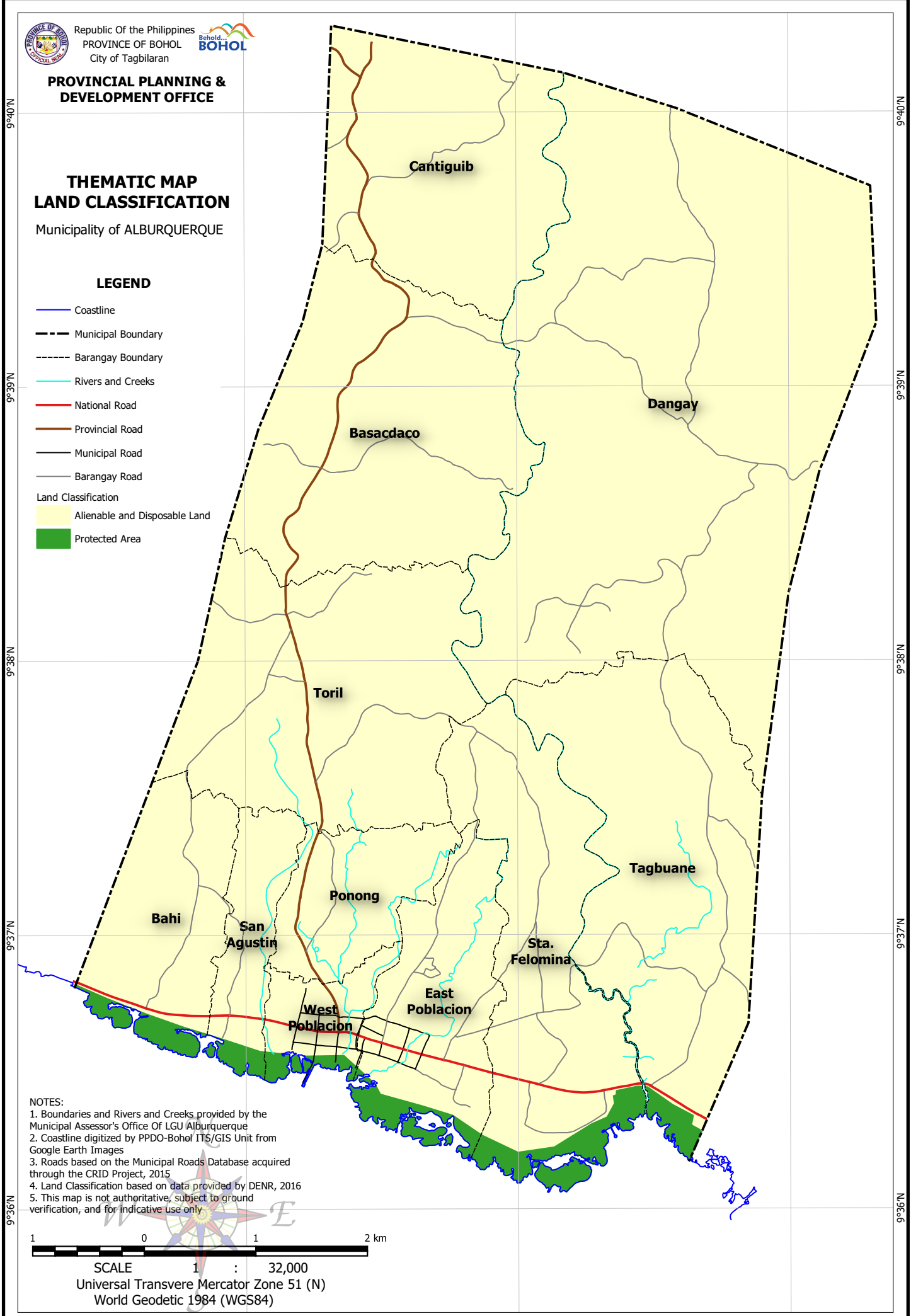
**PROVINCIAL PLANNING &  
 DEVELOPMENT OFFICE**

**THEMATIC MAP  
 LAND CLASSIFICATION**

Municipality of ALBURQUERQUE

**LEGEND**

- Coastline
- Municipal Boundary
- Barangay Boundary
- Rivers and Creeks
- National Road
- Provincial Road
- Municipal Road
- Barangay Road
- Land Classification**
- Alienable and Disposable Land
- Protected Area



**NOTES:**

1. Boundaries and Rivers and Creeks provided by the Municipal Assessor's Office Of LGU Alburquerque
2. Coastline digitized by PPDO-Bohol ITS/GIS Unit from Google Earth Images
3. Roads based on the Municipal Roads Database acquired through the CRID Project, 2015
4. Land Classification based on data provided by DENR, 2016
5. This map is not authoritative, subject to ground verification, and for indicative use only



SCALE 1 : 32,000  
 Universal Transverse Mercator Zone 51 (N)  
 World Geodetic 1984 (WGS84)

123°57'E

123°58'E

123°59'E

9°40'N  
9°39'N  
9°38'N  
9°37'N  
9°36'N

9°40'N  
9°39'N  
9°38'N  
9°37'N  
9°36'N