



**PROVINCIAL PLANNING &
 DEVELOPMENT OFFICE**

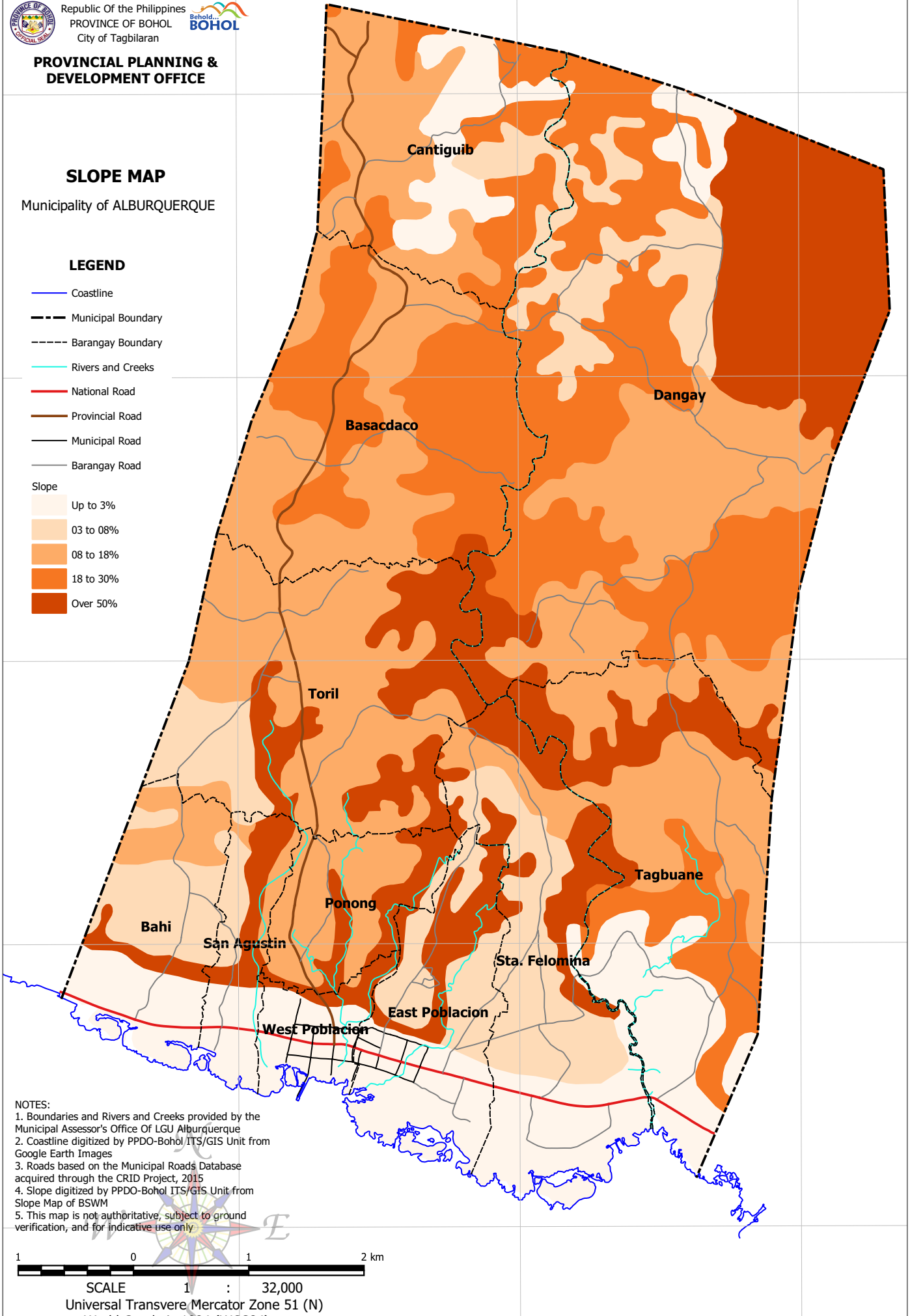
SLOPE MAP

Municipality of ALBURQUERQUE

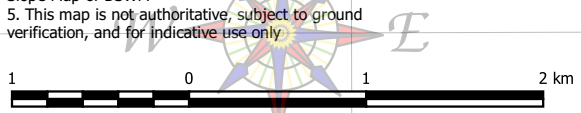
LEGEND

- Coastline
- Municipal Boundary
- Barangay Boundary
- Rivers and Creeks
- National Road
- Provincial Road
- Municipal Road
- Barangay Road

- Slope**
- Up to 3%
 - 03 to 08%
 - 08 to 18%
 - 18 to 30%
 - Over 50%



NOTES:
 1. Boundaries and Rivers and Creeks provided by the Municipal Assessor's Office Of LGU Alburquerque
 2. Coastline digitized by PPDO-Bohol ITS/GIS Unit from Google Earth Images
 3. Roads based on the Municipal Roads Database acquired through the CRID Project, 2015
 4. Slope digitized by PPDO-Bohol ITS/GIS Unit from Slope Map of BSWM
 5. This map is not authoritative, subject to ground verification, and for indicative use only



Universal Transverse Mercator Zone 51 (N)
 World Geodetic 1984 (WGS84)