



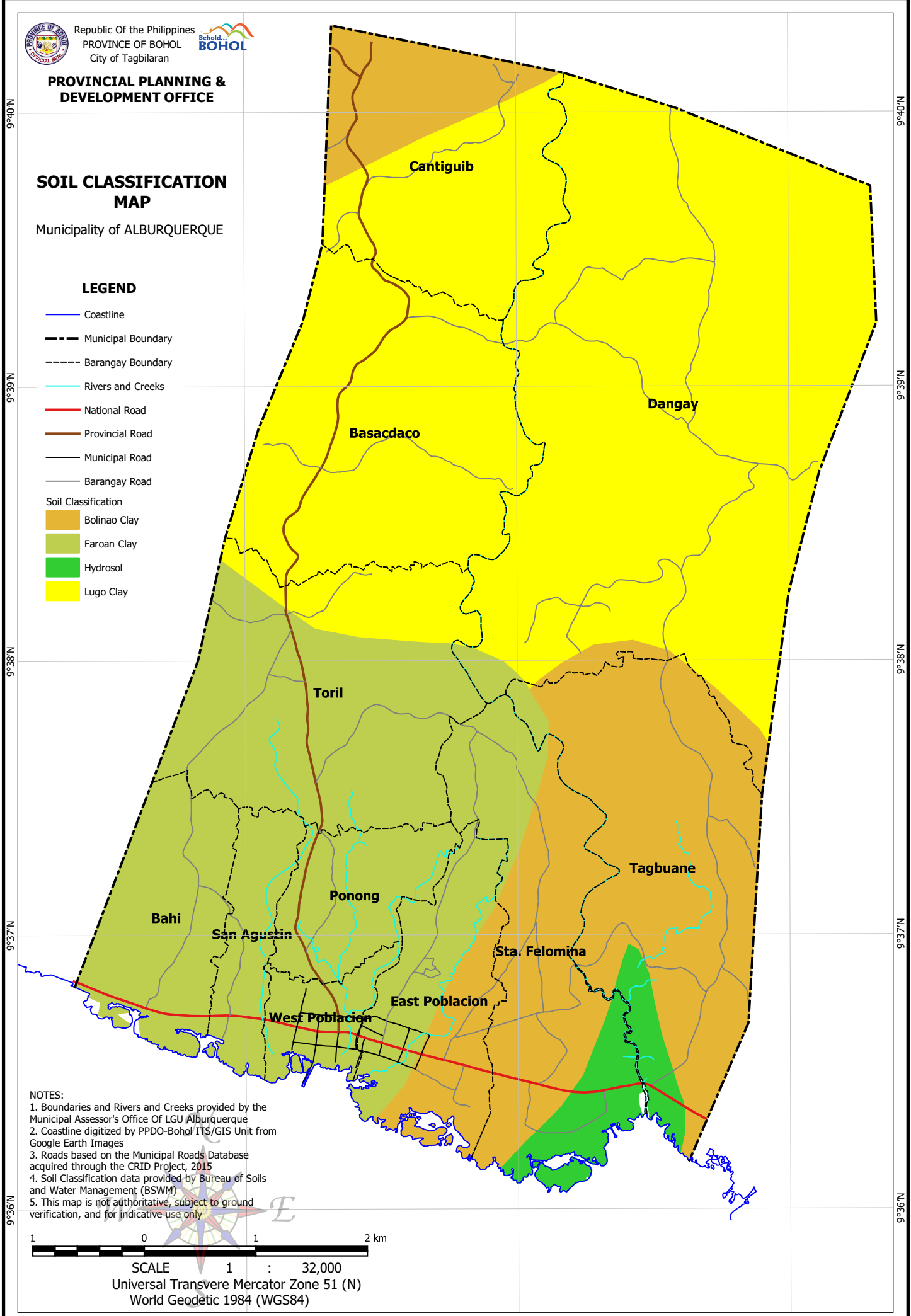
**PROVINCIAL PLANNING &  
 DEVELOPMENT OFFICE**

**SOIL CLASSIFICATION  
 MAP**

Municipality of ALBURQUERQUE

**LEGEND**

- Coastline
- Municipal Boundary
- Barangay Boundary
- Rivers and Creeks
- National Road
- Provincial Road
- Municipal Road
- Barangay Road
- Soil Classification**
- Bolinao Clay
- Faroan Clay
- Hydrosol
- Lugo Clay



**NOTES:**

1. Boundaries and Rivers and Creeks provided by the Municipal Assessor's Office of LGU Alburquerque
2. Coastline digitized by PPDO-Bohol/ ITS/GIS Unit from Google Earth Images
3. Roads based on the Municipal Roads Database acquired through the CRID Project, 2015
4. Soil Classification data provided by Bureau of Soils and Water Management (BSWM)
5. This map is not authoritative, subject to ground verification, and for indicative use only



SCALE 1 : 32,000  
 Universal Transverse Mercator Zone 51 (N)  
 World Geodetic 1984 (WGS84)

123°57'E

123°58'E

123°59'E

9°40'N  
9°39'N  
9°38'N  
9°37'N  
9°36'N

9°40'N  
9°39'N  
9°38'N  
9°37'N  
9°36'N