



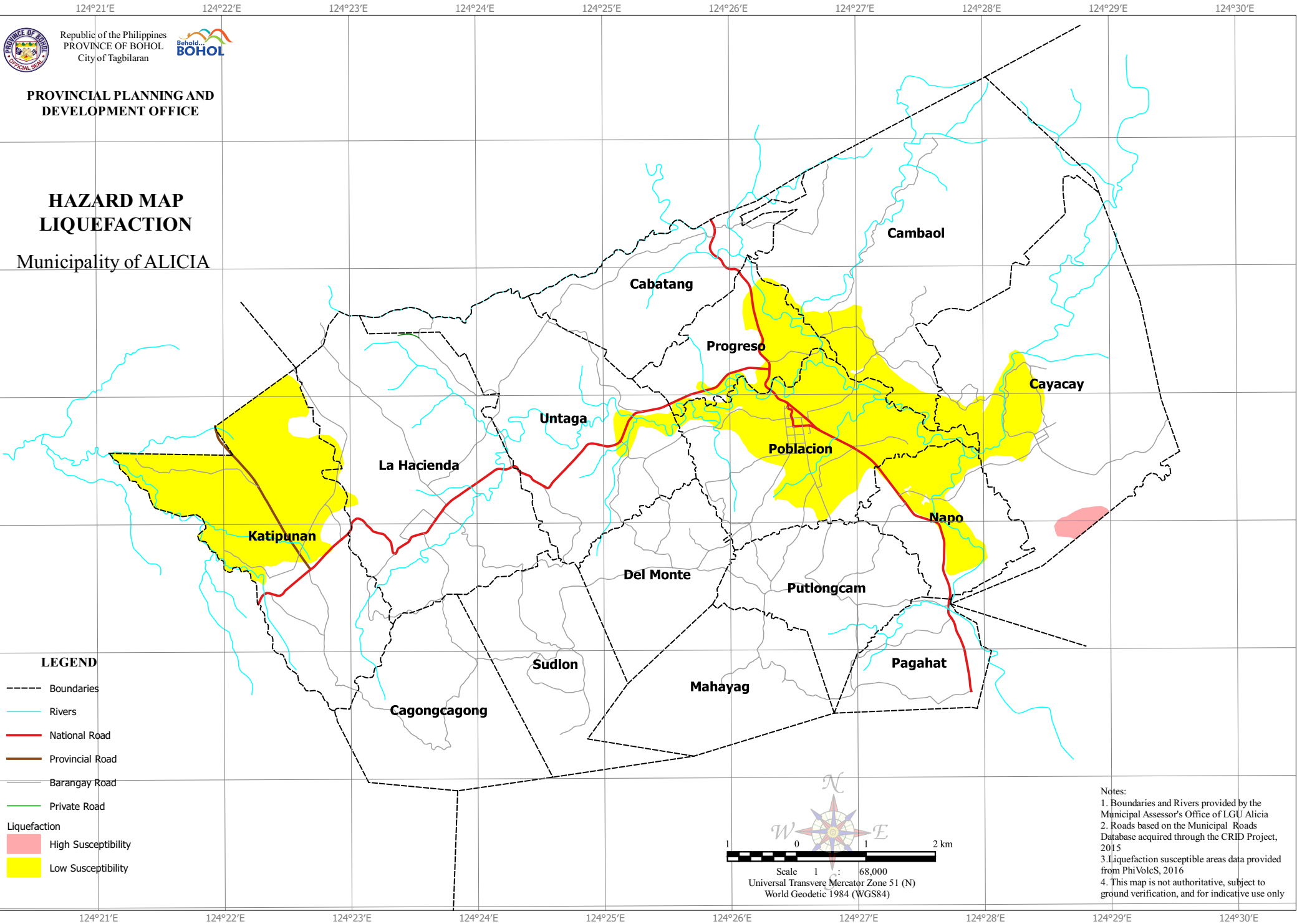
Republic of the Philippines  
 PROVINCE OF BOHOL  
 City of Tagbilaran



PROVINCIAL PLANNING AND  
 DEVELOPMENT OFFICE

# HAZARD MAP LIQUEFACTION

Municipality of ALICIA



### LEGEND

- Boundaries
- Rivers
- National Road
- Provincial Road
- Barangay Road
- Private Road
- Liquefaction**
- High Susceptibility
- Low Susceptibility

Scale 1 : 68,000  
 Universal Transverse Mercator Zone 51 (N)  
 World Geodetic 1984 (WGS84)

- Notes:
1. Boundaries and Rivers provided by the Municipal Assessor's Office of LGU Alicia
  2. Roads based on the Municipal Roads Database acquired through the CRID Project, 2015
  3. Liquefaction susceptible areas data provided from PhiVolcS, 2016
  4. This map is not authoritative, subject to ground verification, and for indicative use only