



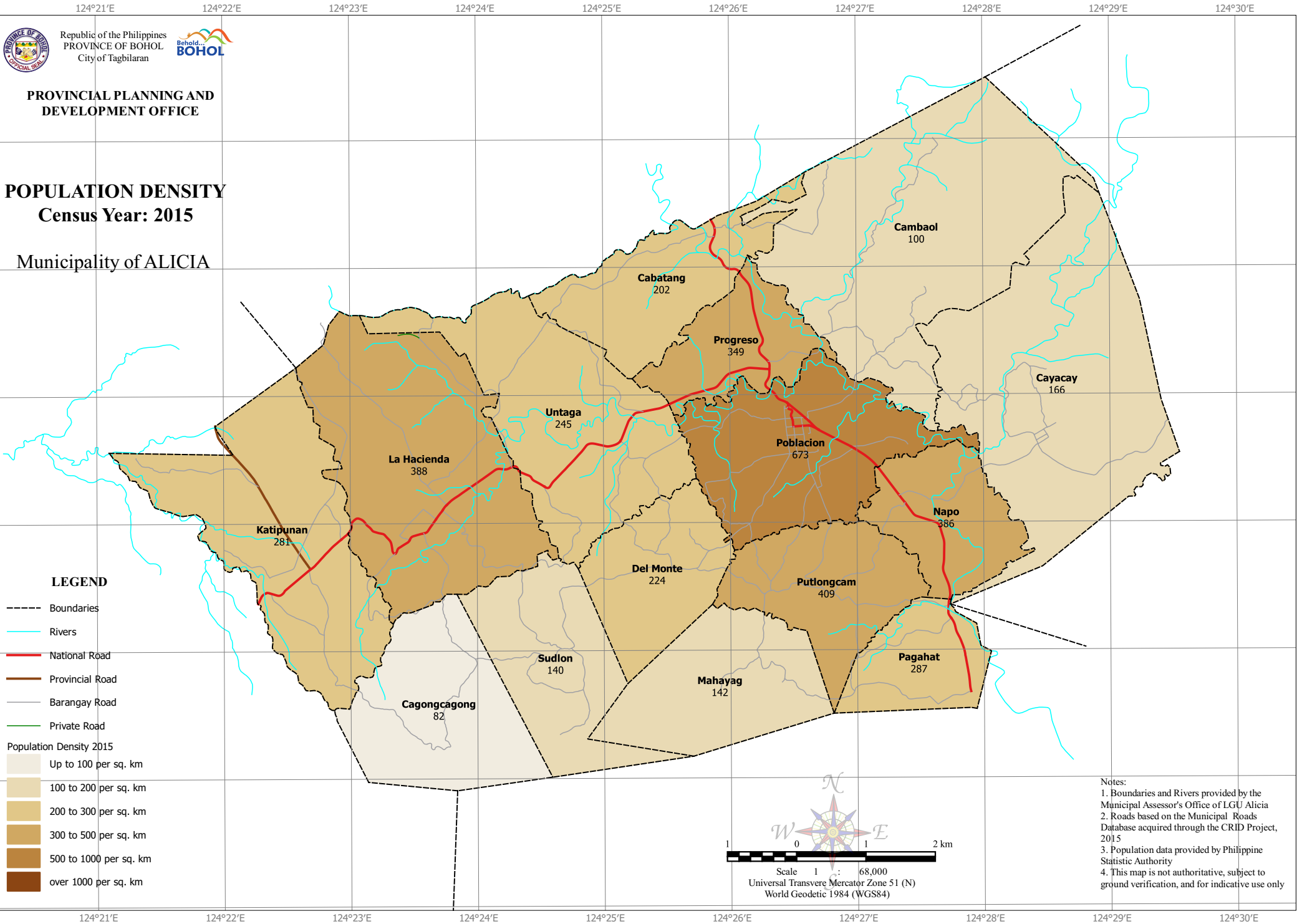
Republic of the Philippines
 PROVINCE OF BOHOL
 City of Tagbilaran



PROVINCIAL PLANNING AND
 DEVELOPMENT OFFICE

POPULATION DENSITY
Census Year: 2015

Municipality of ALICIA



LEGEND

- Boundaries
- Rivers
- National Road
- Provincial Road
- Barangay Road
- Private Road

- Population Density 2015
- Up to 100 per sq. km
 - 100 to 200 per sq. km
 - 200 to 300 per sq. km
 - 300 to 500 per sq. km
 - 500 to 1000 per sq. km
 - over 1000 per sq. km

Scale 1 : 68,000
 Universal Transverse Mercator Zone 51 (N)
 World Geodetic 1984 (WGS84)

Notes:
 1. Boundaries and Rivers provided by the Municipal Assessor's Office of LGU Alicia
 2. Roads based on the Municipal Roads Database acquired through the CRID Project, 2015
 3. Population data provided by Philippine Statistic Authority
 4. This map is not authoritative, subject to ground verification, and for indicative use only