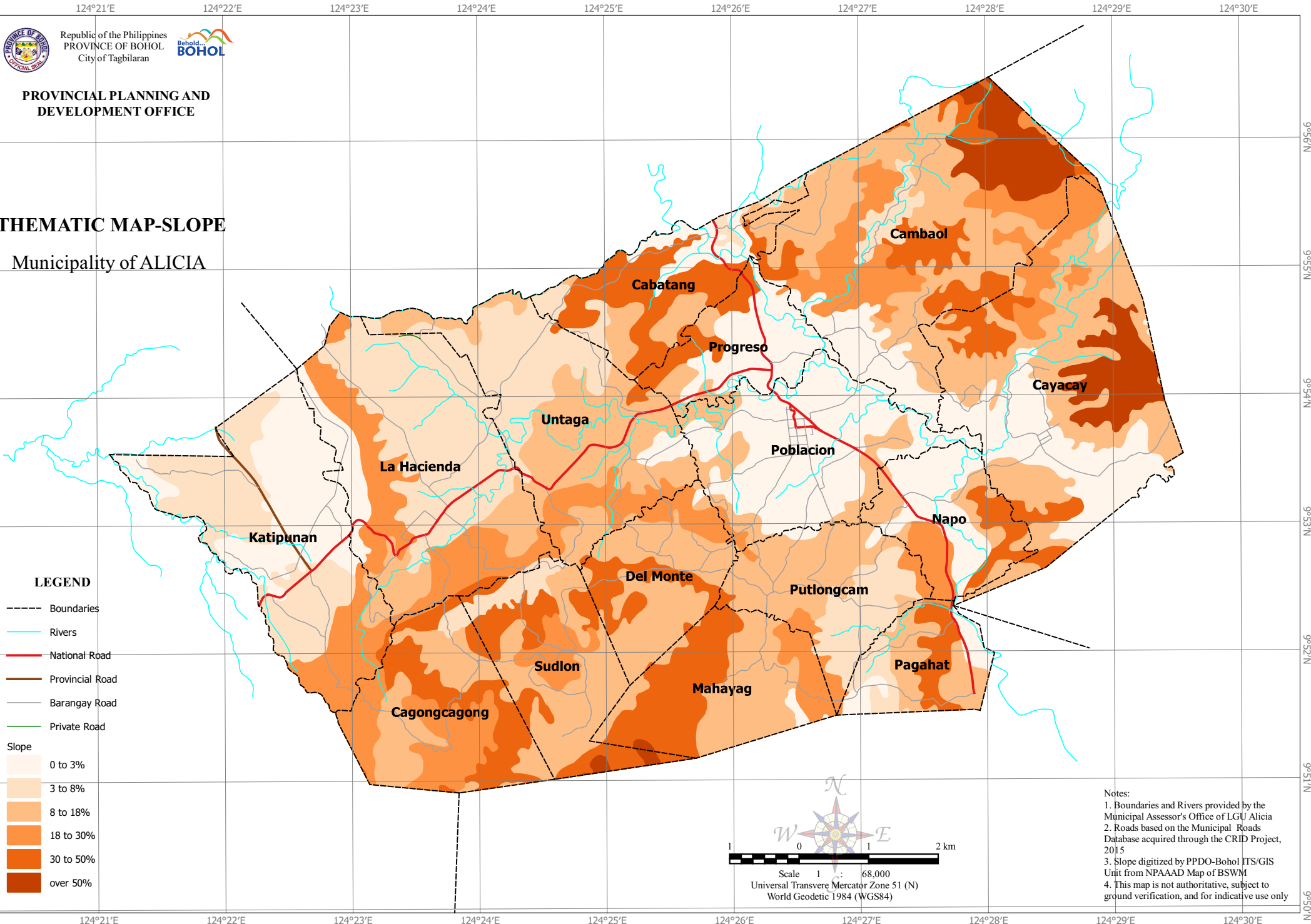




**PROVINCIAL PLANNING AND  
 DEVELOPMENT OFFICE**

**THEMATIC MAP-SLOPE**

Municipality of ALICIA



**LEGEND**

- Boundaries
- Rivers
- National Road
- Provincial Road
- Barangay Road
- Private Road

- Slope**
- 0 to 3%
  - 3 to 8%
  - 8 to 18%
  - 18 to 30%
  - 30 to 50%
  - over 50%

Scale 1 : 68,000  
 Universal Transverse Mercator Zone 51 (N)  
 World Geodetic 1984 (WGS84)

Notes:  
 1. Boundaries and Rivers provided by the Municipal Assessor's Office of LGU Alicia  
 2. Roads based on the Municipal Roads Database acquired through the CRID Project, 2015  
 3. Slope digitized by PPDO-Bohol ITS/GIS Unit from NPAAD Map of BSWM  
 4. This map is not authoritative, subject to ground verification, and for indicative use only