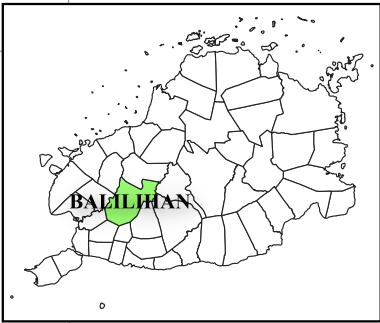


123°56'E 123°58'E 124°00'E 124°02'E 124°04'E

9°50'N
9°48'N
9°46'N
9°44'N
9°42'N



Republic of the Philippines
PROOVINCE OF BOHOL
City of Tagbilaran



**PROVINCIAL PLANNING AND
DEVELOPMENT OFFICE**

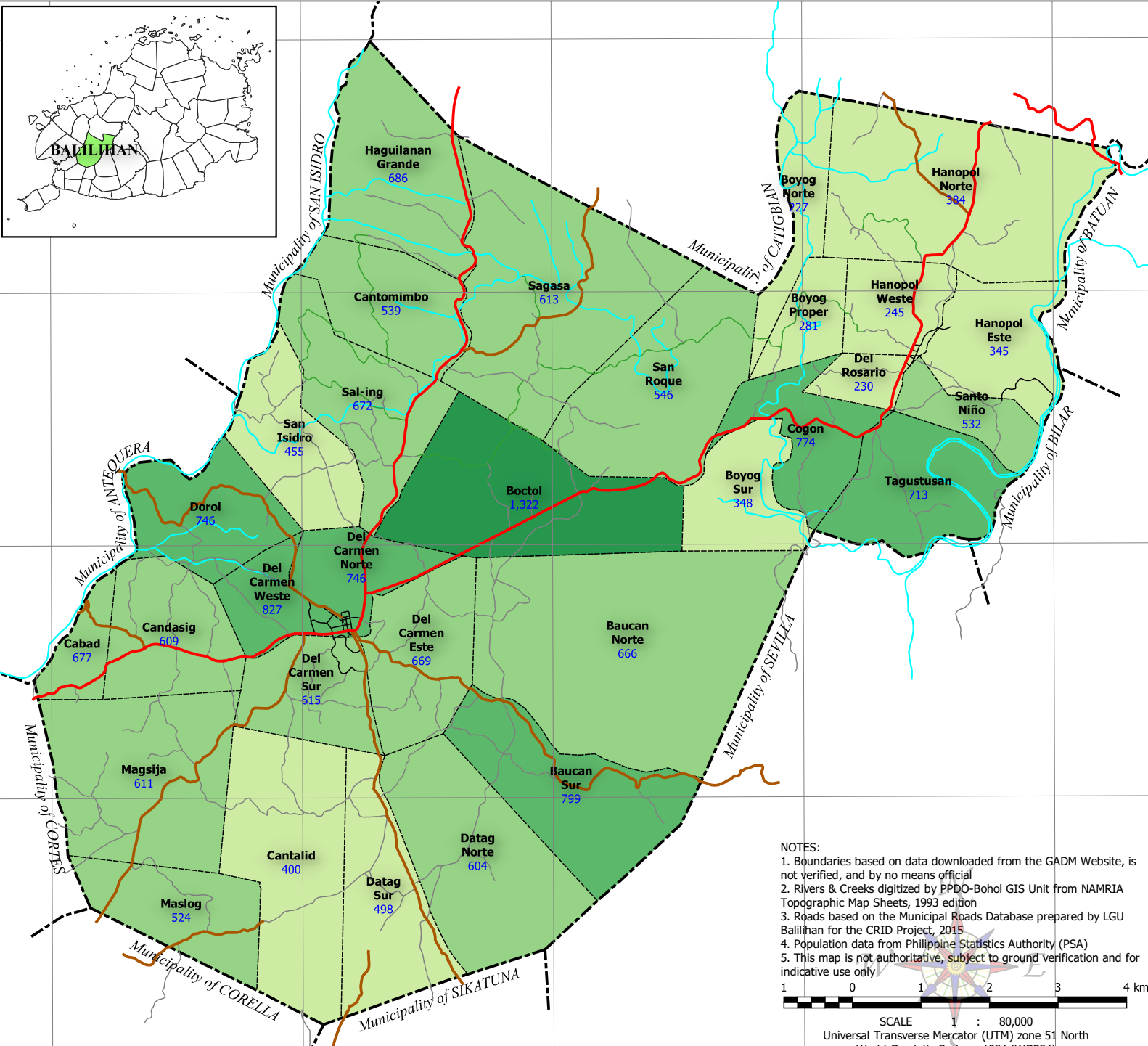
**POPULATION
DISTRIBUTION
Census Year: 2015**
Municipality of BALILIHAN

LEGEND

- Municipal Boundary
- - - Barangay Boundary
- Rivers & Creeks
- National Road
- Provincial Road
- Municipal Road
- Barangay Road
- Farm-to-Market Road

Population 2015

- 200 to 500
- 500 to 700
- 700 to 1,000
- Over 1,000



NOTES:

1. Boundaries based on data downloaded from the GADM Website, is not verified, and by no means official
2. Rivers & Creeks digitized by PPDO-Bohol GIS Unit from NAMRIA Topographic Map Sheets, 1993 edition
3. Roads based on the Municipal Roads Database prepared by LGU Balilihan for the CRID Project, 2015
4. Population data from Philippine Statistics Authority (PSA)
5. This map is not authoritative, subject to ground verification and for indicative use only



SCALE 1 : 80,000
Universal Transverse Mercator (UTM) zone 51 North
World Geodetic System, 1984 (WGS84)

123°56'E 123°58'E 124°00'E 124°02'E 124°04'E