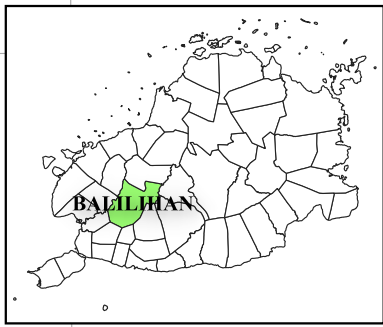


123°56'E 123°58'E 124°00'E 124°02'E 124°04'E

9°50'N
9°48'N
9°46'N
9°44'N
9°42'N



Republic of the Philippines
PROVINCE OF BOHOL
City of Tagbilaran

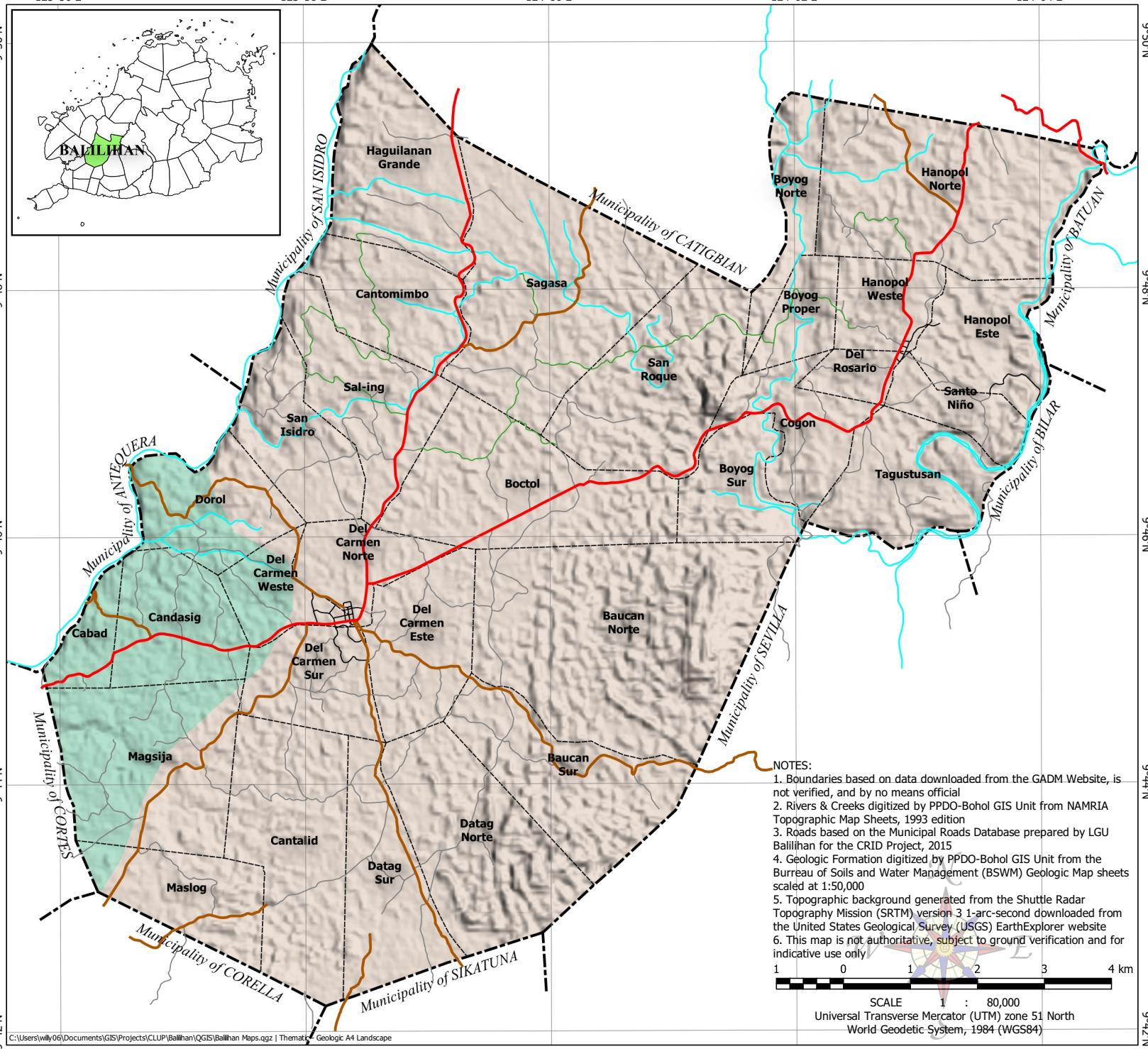


**PROVINCIAL PLANNING AND
DEVELOPMENT OFFICE**

GEOLOGIC MAP Municipality of BALILIHAN

LEGEND

- Municipal Boundary
 - Barangay Boundary
 - Rivers & Creeks
 - National Road
 - Provincial Road
 - Municipal Road
 - Barangay Road
 - Farm-to-Market Road
- Geologic Formation**
- Carmen Formation
 - Maribojoc Limestone



NOTES:

1. Boundaries based on data downloaded from the GADM Website, is not verified, and by no means official
2. Rivers & Creeks digitized by PPDO-Bohol GIS Unit from NAMRIA Topographic Map Sheets, 1993 edition
3. Roads based on the Municipal Roads Database prepared by LGU Balilihan for the CRID Project, 2015
4. Geologic Formation digitized by PPDO-Bohol GIS Unit from the Bureau of Soils and Water Management (BSWM) Geologic Map sheets scaled at 1:50,000
5. Topographic background generated from the Shuttle Radar Topography Mission (SRTM) version 3 1-arc-second downloaded from the United States Geological Survey (USGS) EarthExplorer website
6. This map is not authoritative, subject to ground verification and for indicative use only



SCALE 1 : 80,000
Universal Transverse Mercator (UTM) zone 51 North
World Geodetic System, 1984 (WGS84)

123°56'E 123°58'E 124°00'E 124°02'E 124°04'E