

123°56'E 123°58'E 124°00'E 124°02'E 124°04'E



Republic of the Philippines
PROVINCE OF BOHOL
City of Tagbilaran



**PROVINCIAL PLANNING AND
DEVELOPMENT OFFICE**

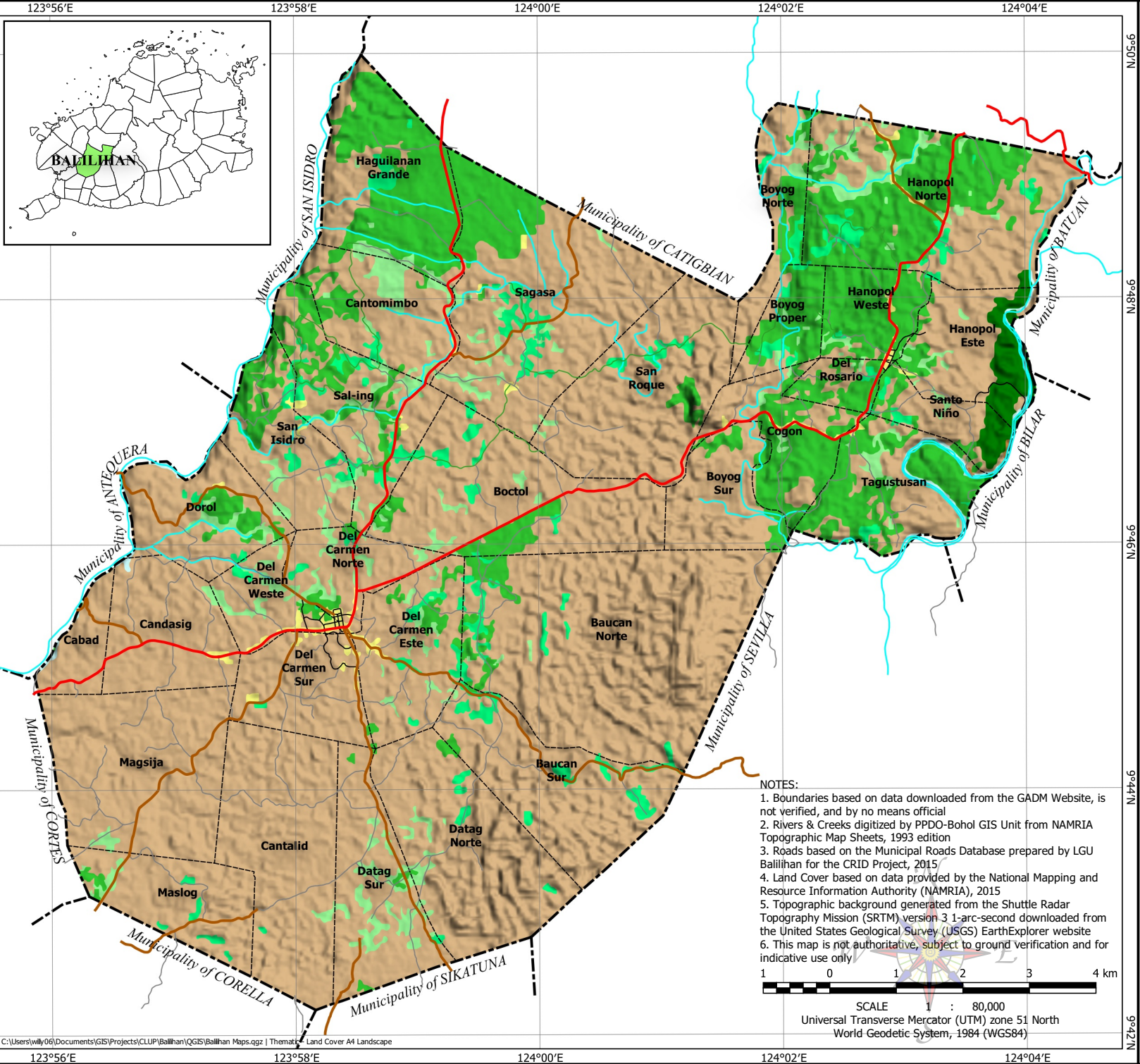
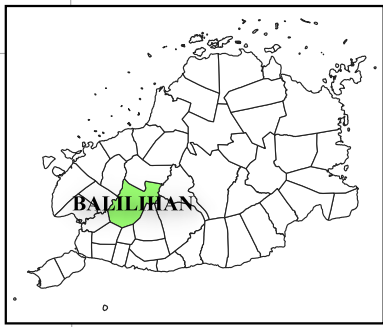
**LAND COVER MAP
Municipality of BALILIHAN**

LEGEND

- Municipal Boundary
- Barangay Boundary
- Rivers & Creeks
- National Road
- Provincial Road
- Municipal Road
- Barangay Road
- Farm-to-Market Road

Land Cover

- Annual Crop
- Brush/Shrubs
- Built-up
- Grassland
- Inland Water
- Open Forest
- Open/Barren
- Perennial Crop



NOTES:

1. Boundaries based on data downloaded from the GADM Website, is not verified, and by no means official
2. Rivers & Creeks digitized by PPDO-Bohol GIS Unit from NAMRIA Topographic Map Sheets, 1993 edition
3. Roads based on the Municipal Roads Database prepared by LGU Balilihan for the CRID Project, 2015
4. Land Cover based on data provided by the National Mapping and Resource Information Authority (NAMRIA), 2015
5. Topographic background generated from the Shuttle Radar Topography Mission (SRTM) version 3 1-arc-second downloaded from the United States Geological Survey (USGS) EarthExplorer website
6. This map is not authoritative, subject to ground verification and for indicative use only



SCALE 1 : 80,000
Universal Transverse Mercator (UTM) zone 51 North
World Geodetic System, 1984 (WGS84)

9°42'N

9°46'N

9°48'N

9°50'N

9°42'N

9°44'N

9°46'N

9°48'N

9°50'N

123°56'E 123°58'E 124°00'E 124°02'E 124°04'E