

123°56'E 123°58'E 124°00'E 124°02'E 124°04'E



Republic of the Philippines  
PROVINCE OF BOHOL  
City of Tagbilaran



**PROVINCIAL PLANNING AND DEVELOPMENT OFFICE**

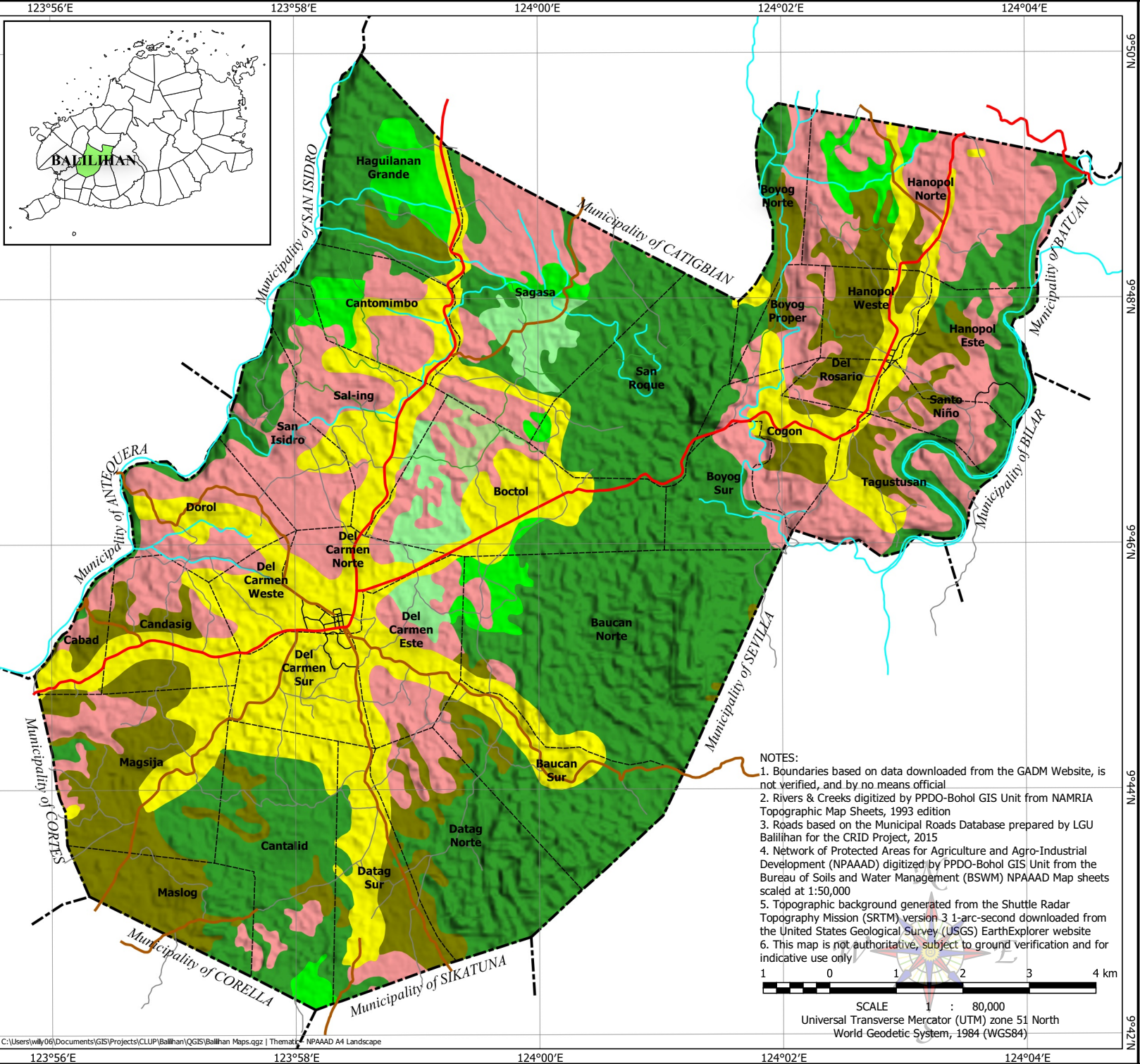
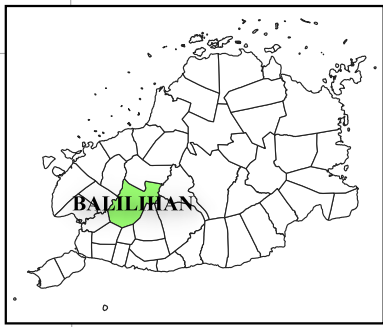
**Network of Protected Areas for Agriculture and Agro-Industrial Development (NPAAAD) Map  
Municipality of BALILIHAN**

**LEGEND**

- Municipal Boundary
- - - - Barangay Boundary
- Rivers & Creeks
- National Road
- Provincial Road
- Municipal Road
- Barangay Road
- Farm-to-Market Road

**NPAAAD**

- All Irrigated Areas
- All Irrigable Lands
- Built-up Areas
- Alluvial Plains
- Agro-Industrial Croplands
- Ecologically Fragile Agricultural
- Forest/Watershed Area



- NOTES:**
1. Boundaries based on data downloaded from the GADM Website, is not verified, and by no means official
  2. Rivers & Creeks digitized by PPDO-Bohol GIS Unit from NAMRIA Topographic Map Sheets, 1993 edition
  3. Roads based on the Municipal Roads Database prepared by LGU Balilihan for the CRID Project, 2015
  4. Network of Protected Areas for Agriculture and Agro-Industrial Development (NPAAAD) digitized by PPDO-Bohol GIS Unit from the Bureau of Soils and Water Management (BSWM) NPAAAD Map sheets scaled at 1:50,000
  5. Topographic background generated from the Shuttle Radar Topography Mission (SRTM) version 3 1-arc-second downloaded from the United States Geological Survey (USGS) EarthExplorer website
  6. This map is not authoritative, subject to ground verification and for indicative use only



SCALE 1 : 80,000  
Universal Transverse Mercator (UTM) zone 51 North  
World Geodetic System, 1984 (WGS84)

123°56'E 123°58'E 124°00'E 124°02'E 124°04'E

9°50'N  
9°48'N  
9°46'N  
9°44'N  
9°42'N

124°00'E  
124°02'E  
124°04'E