

123°56'E 123°58'E 124°00'E 124°02'E 124°04'E



Republic of the Philippines
PROVINCE OF BOHOL
City of Tagbilaran



**PROVINCIAL PLANNING AND
DEVELOPMENT OFFICE**

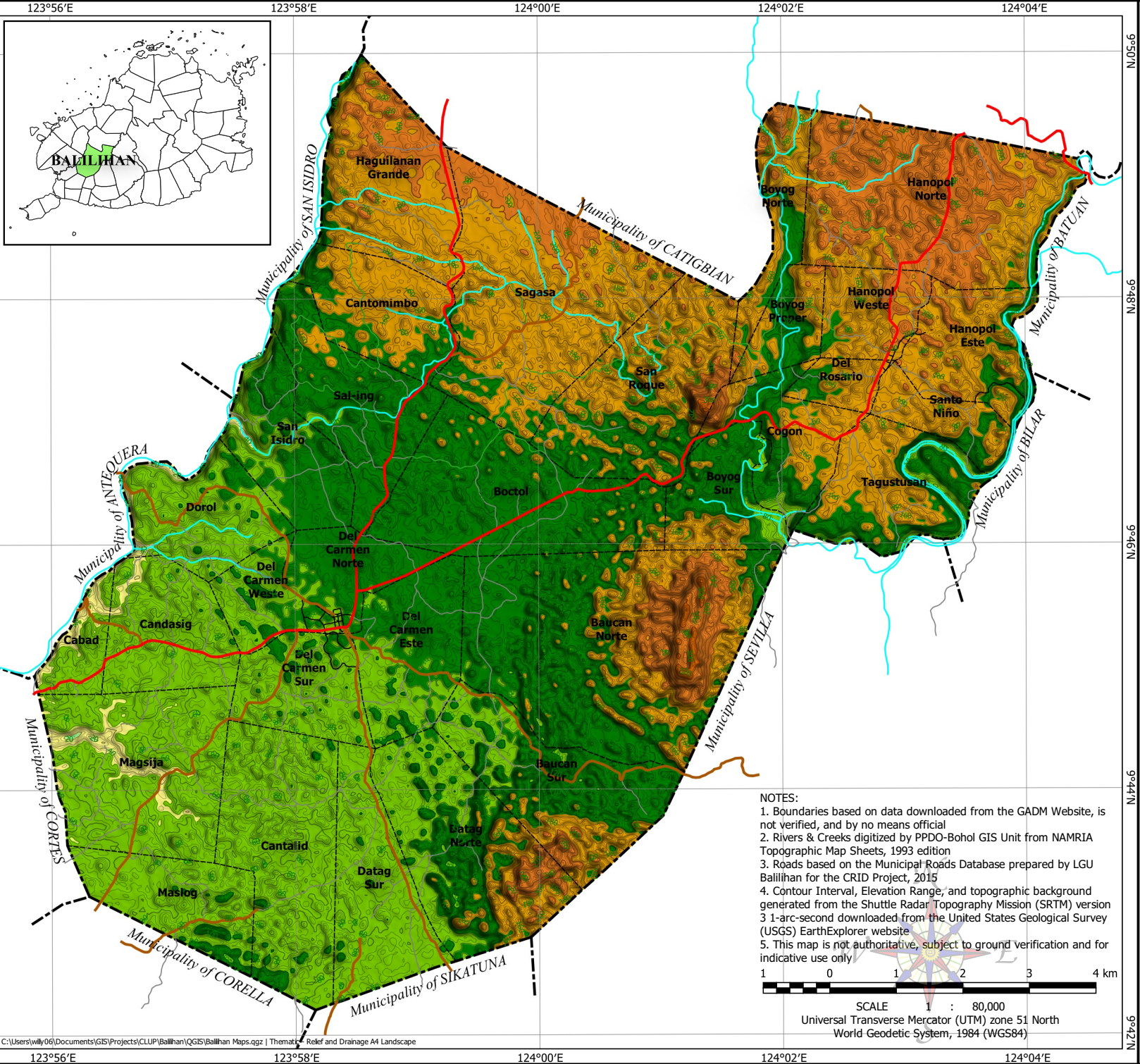
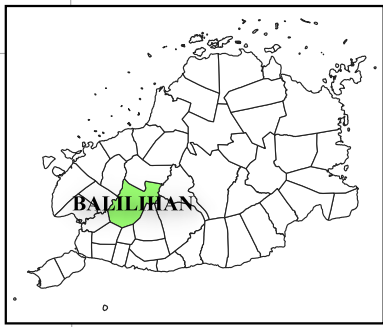
RELIEF & DRAINAGE MAP
Municipality of BALILIHAN

LEGEND

- Municipal Boundary
- Barangay Boundary
- Rivers & Creeks
- National Road
- Provincial Road
- Municipal Road
- Barangay Road
- Farm-to-Market Road

- Contour Interval**
- 5 meters interval
 - 20 meters interval

- Elevation Range**
- Up to 5 meters
 - 5 to 10 meters
 - 10 to 20 meters
 - 20 to 50 meters
 - 50 to 100 meters
 - 100 to 150 meters
 - 150 to 200 meters
 - 200 to 300 meters
 - 300 to 400 meters



NOTES:

- Boundaries based on data downloaded from the GADM Website, is not verified, and by no means official
- Rivers & Creeks digitized by PPDO-Bohol GIS Unit from NAMRIA Topographic Map Sheets, 1993 edition
- Roads based on the Municipal Roads Database prepared by LGU Balilihan for the CRID Project, 2015
- Contour Interval, Elevation Range, and topographic background generated from the Shuttle Radar Topography Mission (SRTM) version 3 1-arc-second downloaded from the United States Geological Survey (USGS) EarthExplorer website
- This map is not authoritative, subject to ground verification and for indicative use only



SCALE 1 : 80,000
Universal Transverse Mercator (UTM) zone 51 North
World Geodetic System, 1984 (WGS84)

9°50'N
9°48'N
9°46'N
9°44'N
9°42'N

123°56'E 123°58'E 124°00'E 124°02'E 124°04'E

123°56'E 123°58'E 124°00'E 124°02'E 124°04'E