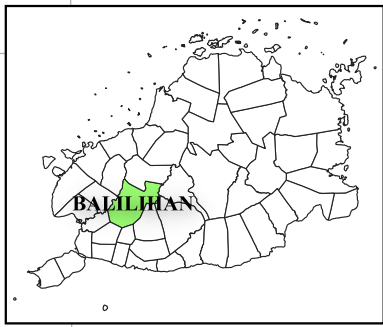


123°56'E 123°58'E 124°00'E 124°02'E 124°04'E

9°50'N 9°48'N 9°46'N 9°44'N 9°42'N



Republic of the Philippines  
PROOVINCE OF BOHOL  
City of Tagbilaran



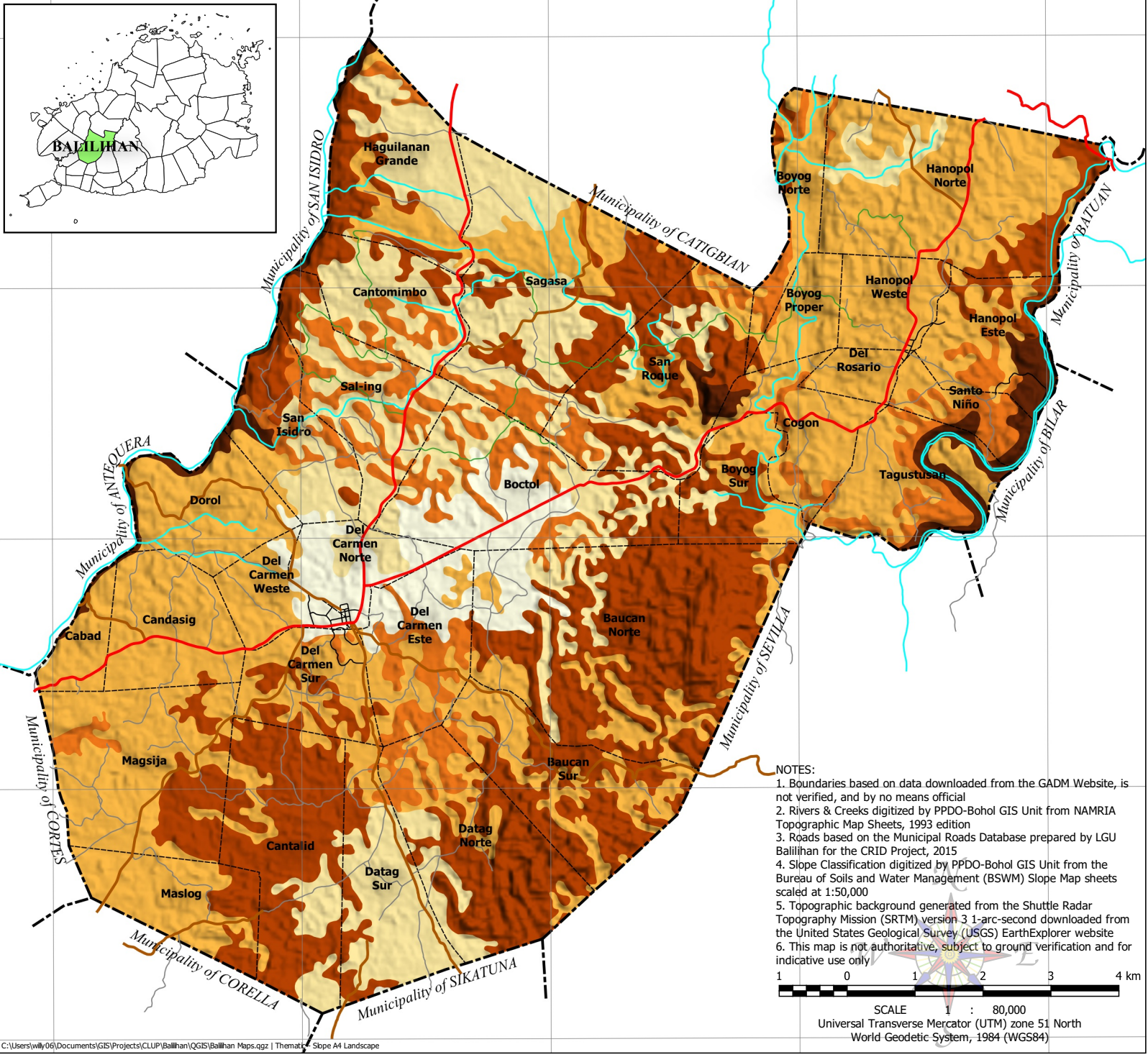
**PROVINCIAL PLANNING AND  
DEVELOPMENT OFFICE**

**SLOPE MAP**  
Municipality of BALILIHAN

**LEGEND**

- Municipal Boundary
- Barangay Boundary
- Rivers & Creeks
- National Road
- Provincial Road
- Municipal Road
- Barangay Road
- Farm-to-Market Road

- Slope Classification**
- Up to 3% - Level to nearly level
  - 3% to 8% - Gently sloping to undulating
  - 8% to 18% - Undulating to rolling
  - 18% to 30% - Rolling to moderately steep
  - 30% to 50% - Steep
  - Over 50% - Very steep



- NOTES:**
1. Boundaries based on data downloaded from the GADM Website, is not verified, and by no means official
  2. Rivers & Creeks digitized by PPDO-Bohol GIS Unit from NAMRIA Topographic Map Sheets, 1993 edition
  3. Roads based on the Municipal Roads Database prepared by LGU Balilihan for the CRID Project, 2015
  4. Slope Classification digitized by PPDO-Bohol GIS Unit from the Bureau of Soils and Water Management (BSWM) Slope Map sheets scaled at 1:50,000
  5. Topographic background generated from the Shuttle Radar Topography Mission (SRTM) version 3 1-arc-second downloaded from the United States Geological Survey (USGS) EarthExplorer website
  6. This map is not authoritative, subject to ground verification and for indicative use only



SCALE 1 : 80,000  
Universal Transverse Mercator (UTM) zone 51 North  
World Geodetic System, 1984 (WGS84)

123°56'E 123°58'E 124°00'E 124°02'E 124°04'E