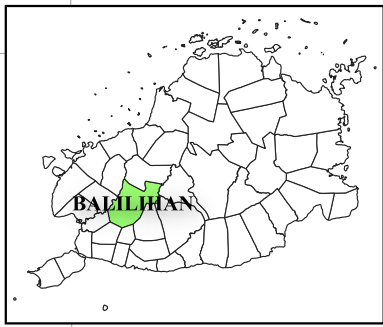


123°56'E 123°58'E 124°00'E 124°02'E 124°04'E

9°50'N
9°48'N
9°46'N
9°44'N
9°42'N

9°50'N
9°48'N
9°46'N
9°44'N
9°42'N



Republic of the Philippines
PROVINCE OF BOHOL
City of Tagbilaran



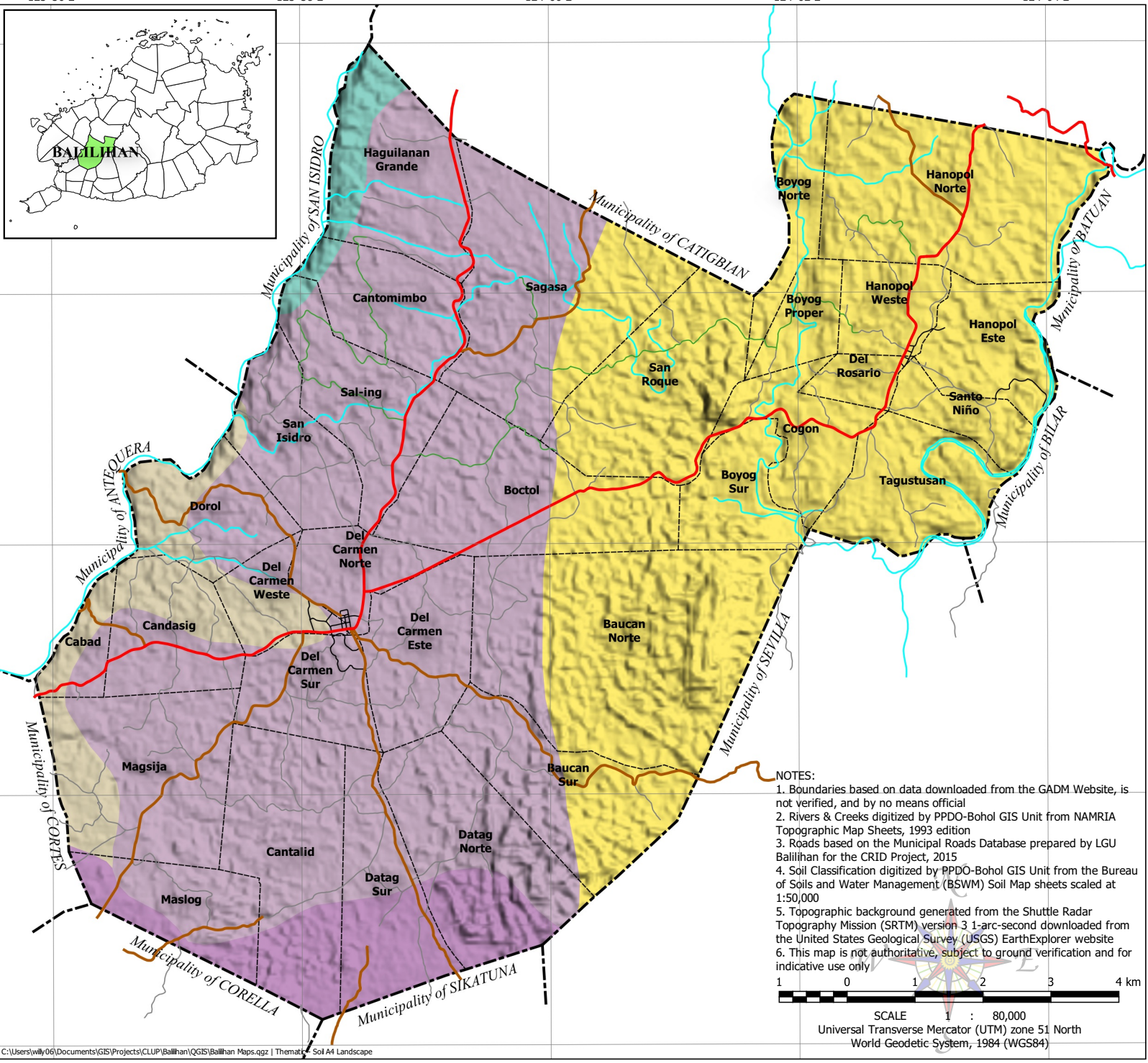
PROVINCIAL PLANNING AND DEVELOPMENT OFFICE

SOIL MAP Municipality of BALILIHAN

LEGEND

- Municipal Boundary
- - - Barangay Boundary
- Rivers & Creeks
- National Road
- Provincial Road
- Municipal Road
- Barangay Road
- Farm-to-Market Road

- Soil Classification**
- Bataan Clay Loam
 - Batuan-Faraon Complex
 - Bolinao Clay
 - Lugo Clay
 - Sevilla Clay



- NOTES:**
- Boundaries based on data downloaded from the GADM Website, is not verified, and by no means official
 - Rivers & Creeks digitized by PPDO-Bohol GIS Unit from NAMRIA Topographic Map Sheets, 1993 edition
 - Roads based on the Municipal Roads Database prepared by LGU Balilihan for the CRID Project, 2015
 - Soil Classification digitized by PPDO-Bohol GIS Unit from the Bureau of Soils and Water Management (BSWM) Soil Map sheets scaled at 1:50,000
 - Topographic background generated from the Shuttle Radar Topography Mission (SRTM) version 3 1-arc-second downloaded from the United States Geological Survey (USGS) EarthExplorer website
 - This map is not authoritative, subject to ground verification and for indicative use only



SCALE 1 : 80,000
Universal Transverse Mercator (UTM) zone 51 North
World Geodetic System, 1984 (WGS84)

123°56'E 123°58'E 124°00'E 124°02'E 124°04'E