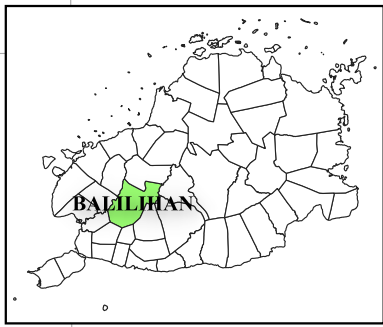


123°56'E 123°58'E 124°00'E 124°02'E 124°04'E

9°50'N 9°48'N 9°46'N 9°44'N 9°42'N



Republic of the Philippines
PROVINCE OF BOHOL
City of Tagbilaran

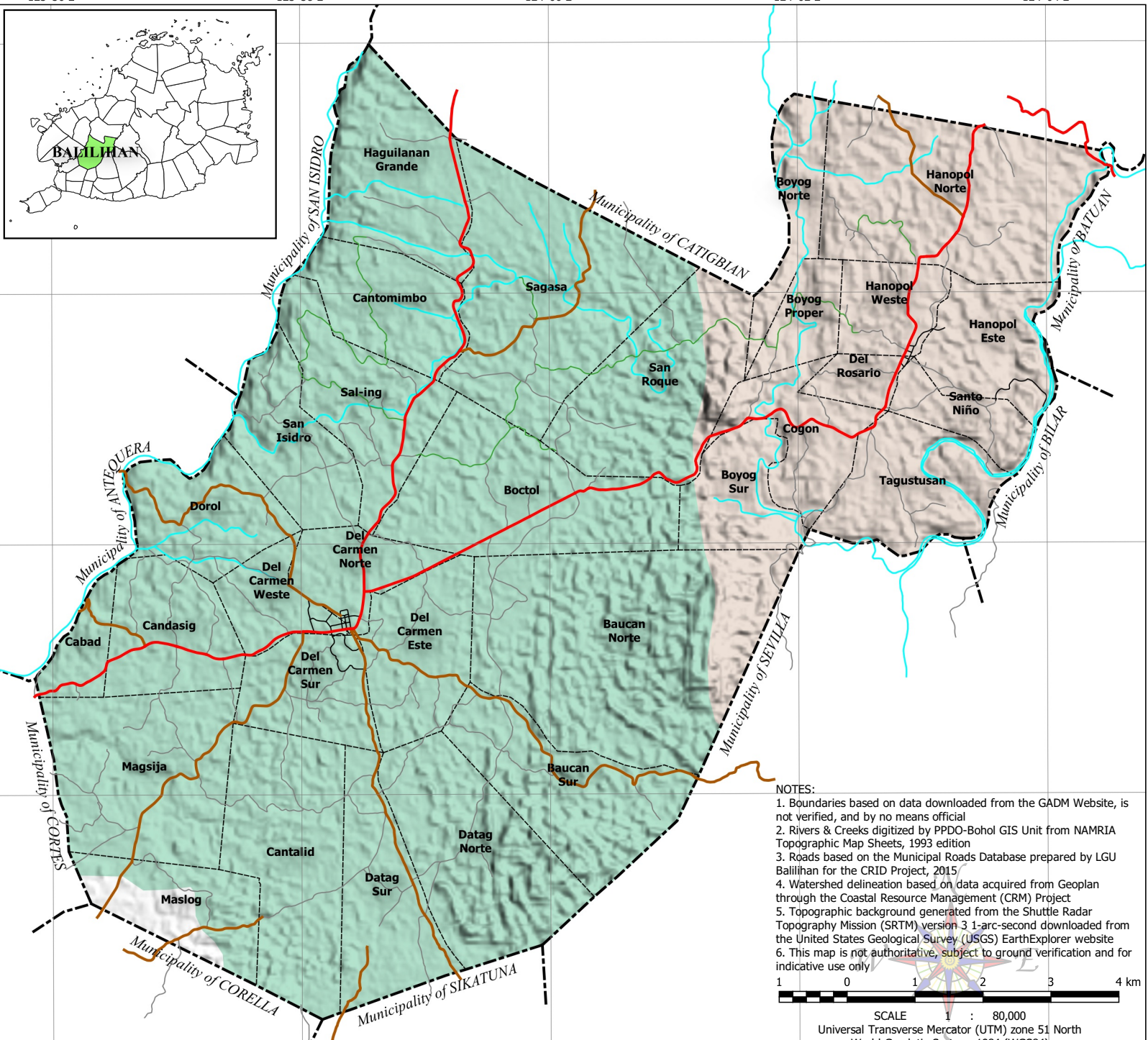


**PROVINCIAL PLANNING AND
DEVELOPMENT OFFICE**

**WATERSHED MAP
Municipality of BALILIHAN**

LEGEND

- Municipal Boundary
 - Barangay Boundary
 - Rivers & Creeks
 - National Road
 - Provincial Road
 - Municipal Road
 - Barangay Road
 - Farm-to-Market Road
- Watersheds**
- Abatan River
 - Loboc River



NOTES:

1. Boundaries based on data downloaded from the GADM Website, is not verified, and by no means official
2. Rivers & Creeks digitized by PPDO-Bohol GIS Unit from NAMRIA Topographic Map Sheets, 1993 edition
3. Roads based on the Municipal Roads Database prepared by LGU Balilihan for the CRID Project, 2015
4. Watershed delineation based on data acquired from Geoplan through the Coastal Resource Management (CRM) Project
5. Topographic background generated from the Shuttle Radar Topography Mission (SRTM) version 3 1-arc-second downloaded from the United States Geological Survey (USGS) EarthExplorer website
6. This map is not authoritative, subject to ground verification and for indicative use only



SCALE 1 : 80,000
Universal Transverse Mercator (UTM) zone 51 North
World Geodetic System, 1984 (WGS84)

123°56'E 123°58'E 124°00'E 124°02'E 124°04'E