



Republic of the Philippines
 PROVINCE OF BOHOL
 City of Tagbilaran

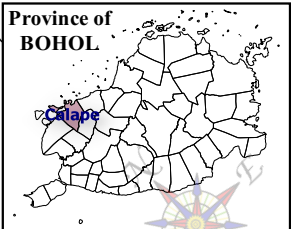


**PROVINCIAL PLANNING AND
 DEVELOPMENT OFFICE**

**Hazard Map
 LIQUEFACTION
 Municipality of CALAPE**

LEGEND

- Coastline
 - Municipal Boundary
 - Barangay Boundary
 - Rivers & Creeks
 - National Road
 - Provincial Road
 - Municipal Road
 - Barangay Road
- Liquefaction**
- High Susceptibility
 - Moderate Susceptibility



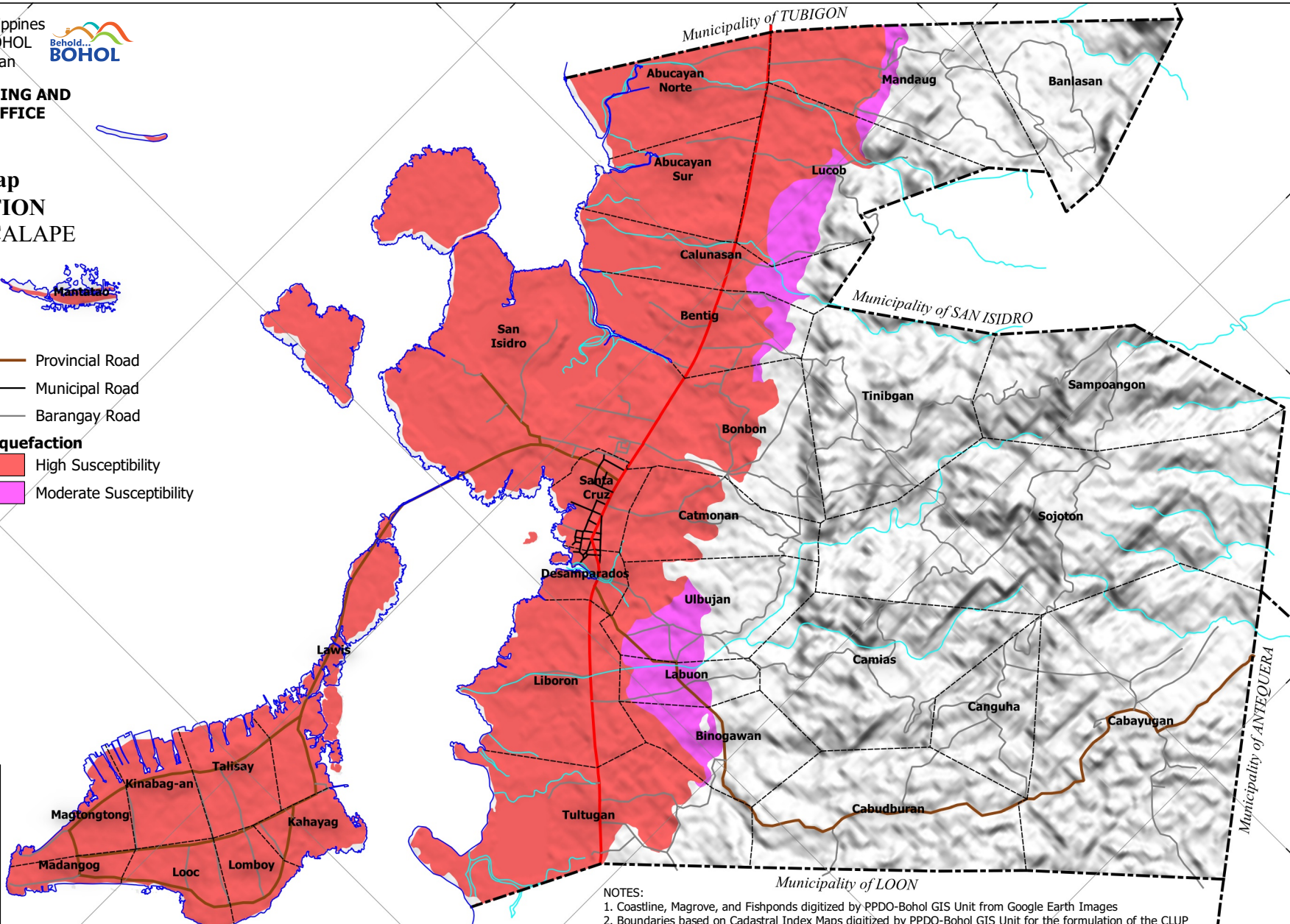
SCALE 1 : 60,000

Universal Transverse Mercator (UTM) zone 51 North
 World Geodetic System, 1984 (WGS84)

C:\Users\willy061\Documents\GIS\Projects\CLUP\Calape\GAS\Calape\maps\agz | Hazard - Liquefaction A4 Landscape

NOTES:

1. Coastline, Magrove, and Fishponds digitized by PPDO-Bohol GIS Unit from Google Earth Images
2. Boundaries based on Cadastral Index Maps digitized by PPDO-Bohol GIS Unit for the formulation of the CLUP
3. Rivers & Creeks digitized by PPDO-Bohol GIS Unit from the National Mapping and Resource Information Authority (NAMRIA) Topographic Map sheet 3720-I 1993 edition scaled at 1:50,000
4. Roads based on the Municipal Roads Database prepared by LGU Calape for the Coordinating Roads Investments for Development (CRID) Project, 2015
5. Liquefaction hazard susceptible areas based on data provided by the Philippine Institute of Volcanology and Seismology (PhIVolcS), 2016
6. This map is not authoritative, subject to ground verification, and for indicative use only



9°54'N 123°48'E

9°52'N 123°50'E

9°50'N 123°52'E