



Republic of the Philippines  
 PROVINCE OF BOHOL  
 City of Tagbilaran

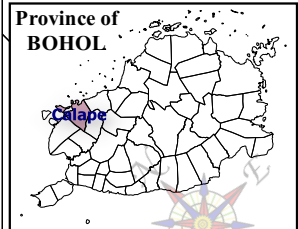


**PROVINCIAL PLANNING AND  
 DEVELOPMENT OFFICE**

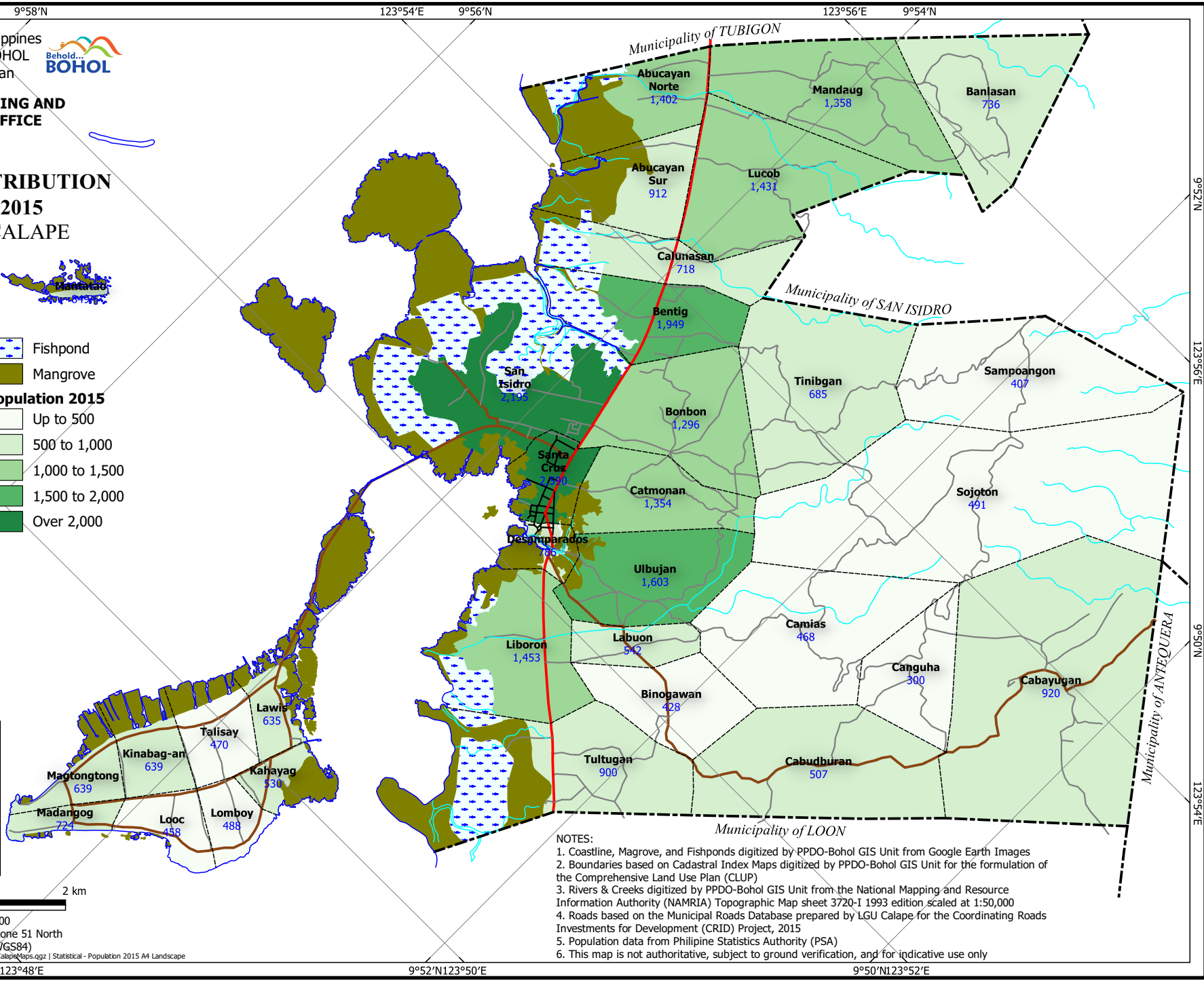
**POPULATION DISTRIBUTION**  
**Census Year: 2015**  
 Municipality of CALAPE

**LEGEND**

- Coastline
  - Municipal Boundary
  - Barangay Boundary
  - Rivers & Creeks
  - National Road
  - Provincial Road
  - Municipal Road
  - Barangay Road
  - Fishpond
  - Mangrove
- Population 2015**
- Up to 500
  - 500 to 1,000
  - 1,000 to 1,500
  - 1,500 to 2,000
  - Over 2,000



Universal Transverse Mercator (UTM) zone 51 North  
 World Geodetic System, 1984 (WGS84)  
 C:\Users\w\061\Documents\GIS\Projects\CLUP\Calape\Map\Calape.mxd | Statistical - Population 2015 A4 Landscape



- NOTES:**
1. Coastline, Magrove, and Fishponds digitized by PPDO-Bohol GIS Unit from Google Earth Images
  2. Boundaries based on Cadastral Index Maps digitized by PPDO-Bohol GIS Unit for the formulation of the Comprehensive Land Use Plan (CLUP)
  3. Rivers & Creeks digitized by PPDO-Bohol GIS Unit from the National Mapping and Resource Information Authority (NAMRIA) Topographic Map sheet 3720-I 1993 edition, scaled at 1:50,000
  4. Roads based on the Municipal Roads Database prepared by LGU Calape for the Coordinating Roads Investments for Development (CRID) Project, 2015
  5. Population data from Philippine Statistics Authority (PSA)
  6. This map is not authoritative, subject to ground verification, and for indicative use only

123°52'E 9°58'N

123°54'E 9°56'N

123°56'E 9°54'N

123°50'E 9°58'N

123°48'E 9°56'N

9°57'N

123°56'E

9°50'N

123°54'E

9°54'N 123°48'E

9°52'N 123°50'E

9°50'N 123°52'E