



Republic of the Philippines  
 PROVINCE OF BOHOL  
 City of Tagbilaran

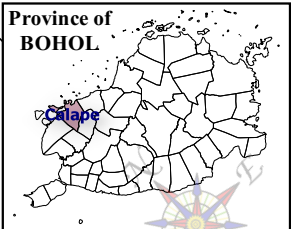


PROVINCIAL PLANNING AND  
 DEVELOPMENT OFFICE

**POPULATION TEMPORAL  
 CHANGE**  
**Census Year: 2007-2010**  
 Municipality of CALAPE

**LEGEND**

- Coastline
  - Municipal Boundary
  - Barangay Boundary
  - Rivers & Creeks
  - National Road
  - Provincial Road
  - Municipal Road
  - Barangay Road
  - Fishpond
  - Mangrove
- Population Temporal Change 2007-2010**
- Decrease by over 200
  - Decrease by 100 to 200
  - Decrease by up to 100
  - Increase by up to 100
  - Increase by over 200

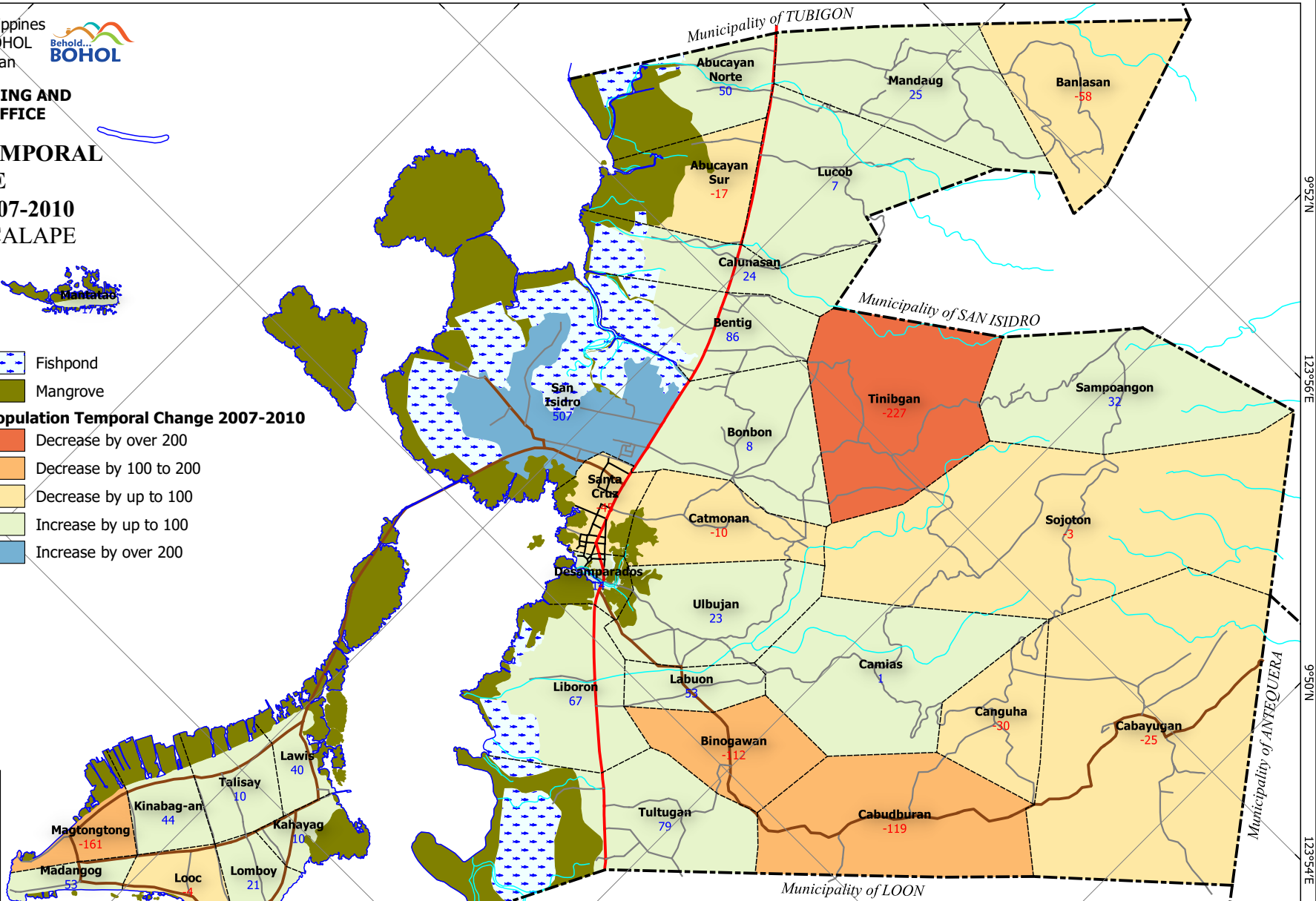


SCALE 1 : 60,000

Universal Transverse Mercator (UTM) zone 51 North

World Geodetic System, 1984 (WGS84)

C:\Users\w\061\Documents\GIS\Projects\CLUP\Calape\Map\Map\Calape\Map.aprx | Statistical - Population Temporal Change 2007-2010 A4 Landscape



**NOTES:**

1. Coastline, Magrove, and Fishponds digitized by PPDO-Bohol GIS Unit from Google Earth Images
2. Boundaries based on Cadastral Index Maps digitized by PPDO-Bohol GIS Unit for the formulation of the CLUP
3. Rivers & Creeks digitized by PPDO-Bohol GIS Unit from the National Mapping and Resource Information Authority (NAMRIA) Topographic Map sheet 3720-I 1993 edition scaled at 1:50,000
4. Roads based on the Municipal Roads Database prepared by LGU Calape for the Coordinating Roads Investments for Development (CRID) Project, 2015
5. Population Temporal Change computed using population data from Philippine Statistics Authority (PSA)
6. This map is not authoritative, subject to ground verification, and for indicative use only

9°54'N 123°48'E

9°52'N 123°50'E

9°50'N 123°52'E