



Republic of the Philippines
PROVINCE OF BOHOL
City of Tagbilaran

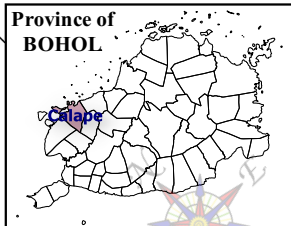


PROVINCIAL PLANNING AND
DEVELOPMENT OFFICE

GEOLOGIC MAP Municipality of CALAPE

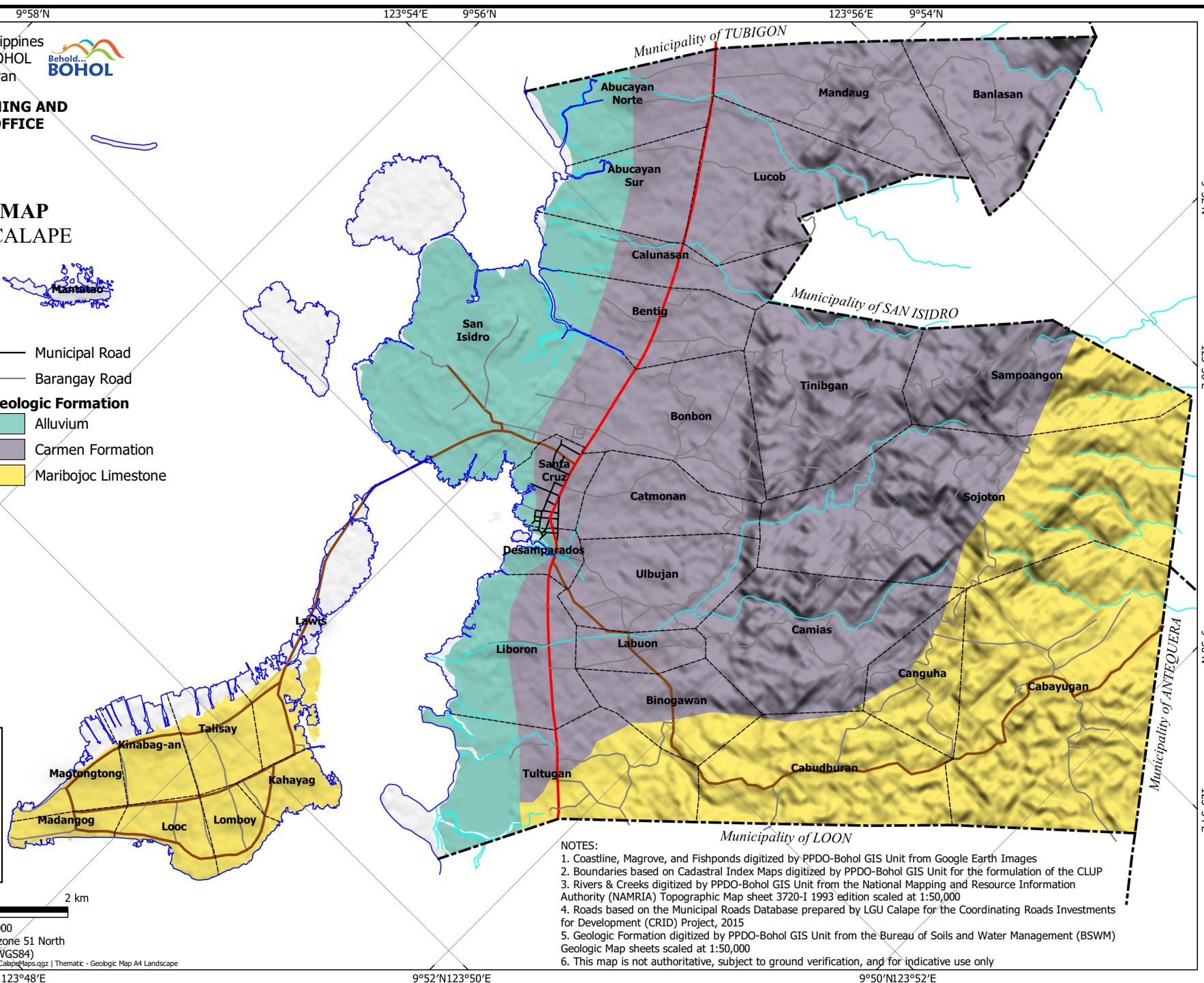
LEGEND

- | | |
|--------------------|---------------------------|
| Coastline | Municipal Road |
| Municipal Boundary | Barangay Road |
| Barangay Boundary | Geologic Formation |
| Rivers & Creeks | Alluvium |
| National Road | Carmen Formation |
| Provincial Road | Maribojoc Limestone |



SCALE 1 : 60,000
Universal Transverse Mercator (UTM) zone 51 North
World Geodetic System, 1984 (WGS84)

C:\Users\willy\OneDrive\GIS\Projects\CLUP\Calape\GIS\Calape\Maps\agsz | Thematic - Geologic Map A4 Landscape



NOTES:

1. Coastline, Magrove, and Fishponds digitized by PPDO-Bohol GIS Unit from Google Earth Images
2. Boundaries based on Cadastral Index Maps digitized by PPDO-Bohol GIS Unit for the formulation of the CLUP
3. Rivers & Creeks digitized by PPDO-Bohol GIS Unit from the National Mapping and Resource Information Authority (NAMRIA) Topographic Map sheet 3720-I 1993 edition scaled at 1:50,000
4. Roads based on the Municipal Roads Database prepared by LGU Calape for the Coordinating Roads Investments for Development (CRID) Project, 2015
5. Geologic Formation digitized by PPDO-Bohol GIS Unit from the Bureau of Soils and Water Management (BSWM) Geologic Map sheets scaled at 1:50,000
6. This map is not authoritative, subject to ground verification, and for indicative use only