

124°06'E

124°09'E

124°12'E

9°54'N

9°51'N

9°48'N

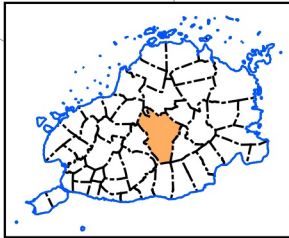
9°45'N

124°12'E

9°55'N

9°52'N

124°15'E



Republic of the Philippines  
PROVINCE OF BOHOL  
City of Tagbilaran



PROVINCIAL PLANNING AND DEVELOPMENT OFFICE

# LAND COVER MAP

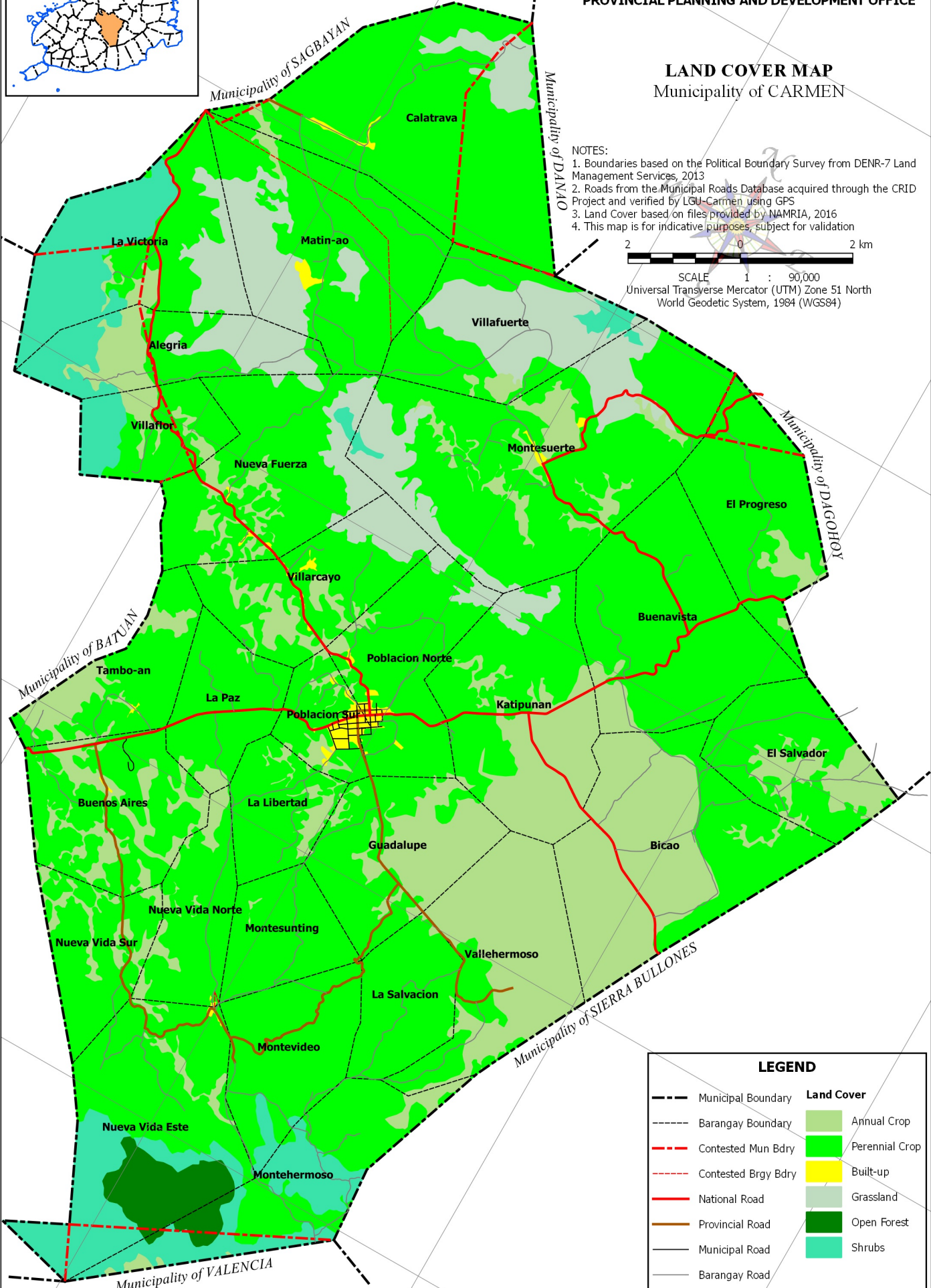
## Municipality of CARMEN

**NOTES:**

1. Boundaries based on the Political Boundary Survey from DENR-7 Land Management Services, 2013
2. Roads from the Municipal Roads Database acquired through the CRID Project and verified by LGU-Carmen using GPS
3. Land Cover based on files provided by NAMRIA, 2016
4. This map is for indicative purposes, subject for validation



SCALE 1 : 90,000  
Universal Transverse Mercator (UTM) Zone 51 North  
World Geodetic System, 1984 (WGS84)



LEGEND	
	Municipal Boundary
	Barangay Boundary
	Contested Mun Bdry
	Contested Brgy Bdry
	National Road
	Provincial Road
	Municipal Road
	Barangay Road
	Annual Crop
	Perennial Crop
	Built-up
	Grassland
	Open Forest
	Shrubs

124°12'E

124°15'E

124°18'E