

124°06'E

124°09'E

124°12'E

9°54'N

9°51'N

9°48'N

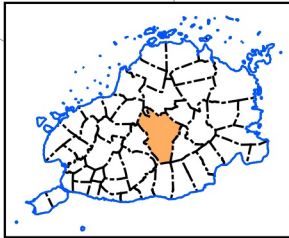
9°45'N

9°57'N

9°56'N

9°56'N

9°56'N



Republic of the Philippines
PROVINCE OF BOHOL
City of Tagbilaran



PROVINCIAL PLANNING AND DEVELOPMENT OFFICE

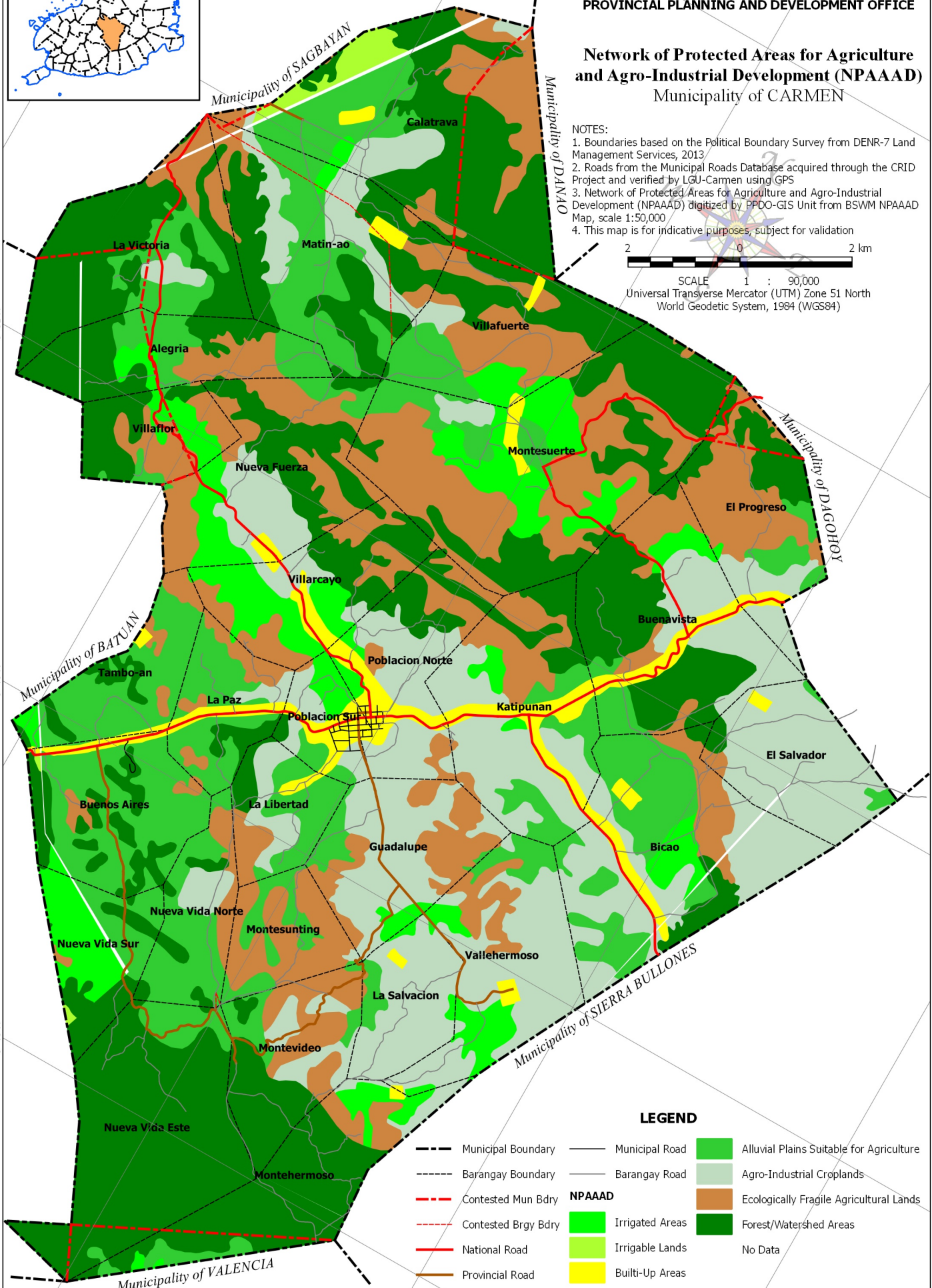
Network of Protected Areas for Agriculture and Agro-Industrial Development (NPAAAD) Municipality of CARMEN

NOTES:

1. Boundaries based on the Political Boundary Survey from DENR-7 Land Management Services, 2013
2. Roads from the Municipal Roads Database acquired through the CRID Project and verified by LGU-Carmen using GPS
3. Network of Protected Areas for Agriculture and Agro-Industrial Development (NPAAAD) digitized by PPDO-GIS Unit from BSWM NPAAAD Map, scale 1:50,000
4. This map is for indicative purposes, subject for validation



SCALE 1 : 90,000
Universal Transverse Mercator (UTM) Zone 51 North
World Geodetic System, 1984 (WGS84)



LEGEND

- Municipal Boundary
- - - Barangay Boundary
- - - Contested Mun Bdry
- - - Contested Brgy Bdry
- == National Road
- == Provincial Road
- == Municipal Road
- == Barangay Road
- NPAAAD
- == Irrigated Areas
- == Irrigable Lands
- == Built-Up Areas
- Alluvial Plains Suitable for Agriculture
- Agro-Industrial Croplands
- Ecologically Fragile Agricultural Lands
- Forest/Watershed Areas
- No Data

124°12'E

124°15'E

124°18'E