

124°06'E

124°09'E

124°12'E

9°54'N

9°51'N

9°48'N

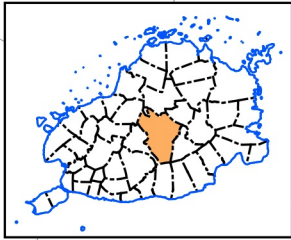
9°45'N

N:57°6

N:15°6

N:15°6

N:15°6



Republic of the Philippines
PROVINCE OF BOHOL
City of Tagbilaran



PROVINCIAL PLANNING AND DEVELOPMENT OFFICE

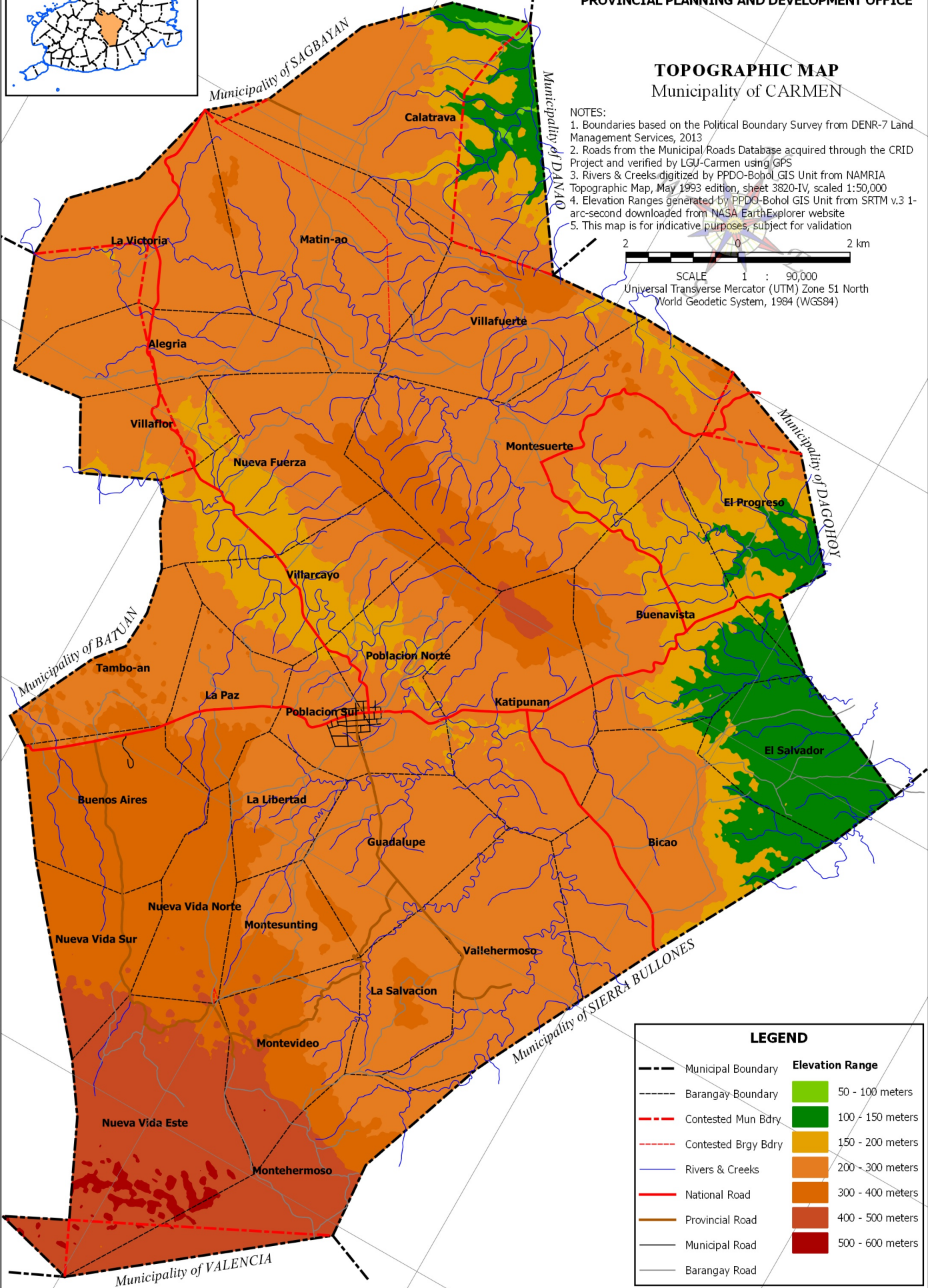
TOPOGRAPHIC MAP Municipality of CARMEN

NOTES:

1. Boundaries based on the Political Boundary Survey from DENR-7 Land Management Services, 2013
2. Roads from the Municipal Roads Database acquired through the CRID Project and verified by LGU-Carmen using GPS
3. Rivers & Creeks digitized by PPDO-Bohol GIS Unit from NAMRIA Topographic Map, May 1993 edition, sheet 3820-IV, scaled 1:50,000
4. Elevation Ranges generated by PPDO-Bohol GIS Unit from SRTM v.3 1-arc-second downloaded from NASA EarthExplorer website
5. This map is for indicative purposes, subject for validation



SCALE 1 : 90,000
Universal Transverse Mercator (UTM) Zone 51 North
World Geodetic System, 1984 (WGS84)



LEGEND

	Municipal Boundary		Elevation Range 50 - 100 meters
	Barangay Boundary		100 - 150 meters
	Contested Mun Bdry		150 - 200 meters
	Contested Brgy Bdry		200 - 300 meters
	Rivers & Creeks		300 - 400 meters
	National Road		400 - 500 meters
	Provincial Road		500 - 600 meters
	Municipal Road		
	Barangay Road		

124°12'E

124°15'E

124°18'E