

123°52'E

123°53'E

123°54'E

123°55'E

123°56'E

123°57'E



Republic of the Philippines  
PROVINCE OF BOHOL  
City of Tagbilaran



**PROVINCIAL PLANNING AND DEVELOPMENT OFFICE**

**LEGEND**

--- Municipal Boundary	<b>Roads</b>
--- Barangay Boundary	— National Road
— Coastline	— Provincial Road
— Rivers and Creeks	— Municipal Road
	— Barangay Road

**BASE MAP**  
Municipality of CORTES

9°45'N

9°44'N

9°43'N

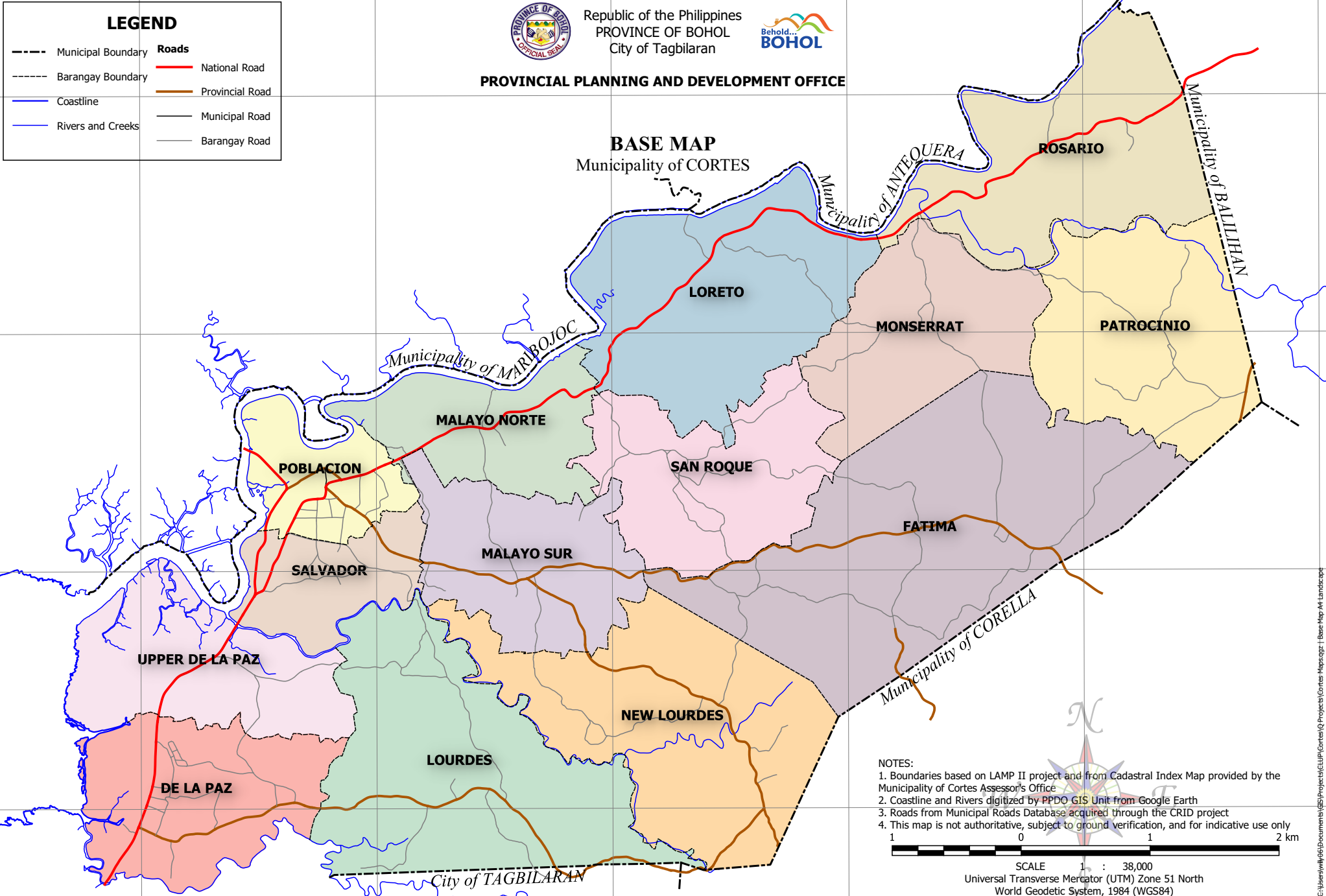
9°42'N

9°45'N

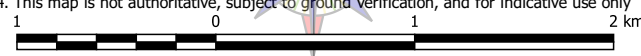
9°44'N

9°43'N

9°42'N



- NOTES:**
1. Boundaries based on LAMP II project and from Cadastral Index Map provided by the Municipality of Cortes Assessor's Office
  2. Coastline and Rivers digitized by PPDO GIS Unit from Google Earth
  3. Roads from Municipal Roads Database acquired through the CRID project
  4. This map is not authoritative, subject to ground verification, and for indicative use only



SCALE 1 : 38,000  
Universal Transverse Mercator (UTM) Zone 51 North  
World Geodetic System, 1984 (WGS84)

123°52'E

123°53'E

123°54'E

123°55'E

123°56'E

123°57'E

C:\Users\wll69\Documents\GIS\Projects\GIS\PPDO\Cortes\_Maps\Map\_A4\_Landscape