

124°07'30"E

124°09'00"E





124°10'30"E

124°12'00"E

**LEGEND**

-  Coastline
-  Municipal Boundary
-  Barangay Boundary
-  Contested Municipal Boundary
-  Rivers & Creeks
-  National Road
-  Provincial Road
-  Municipal Road
-  Barangay Road
-  Farm-to-Market Road

**Flooding**

-  Very High Susceptibility
-  High Susceptibility
-  Moderate Susceptibility
-  Low Susceptibility



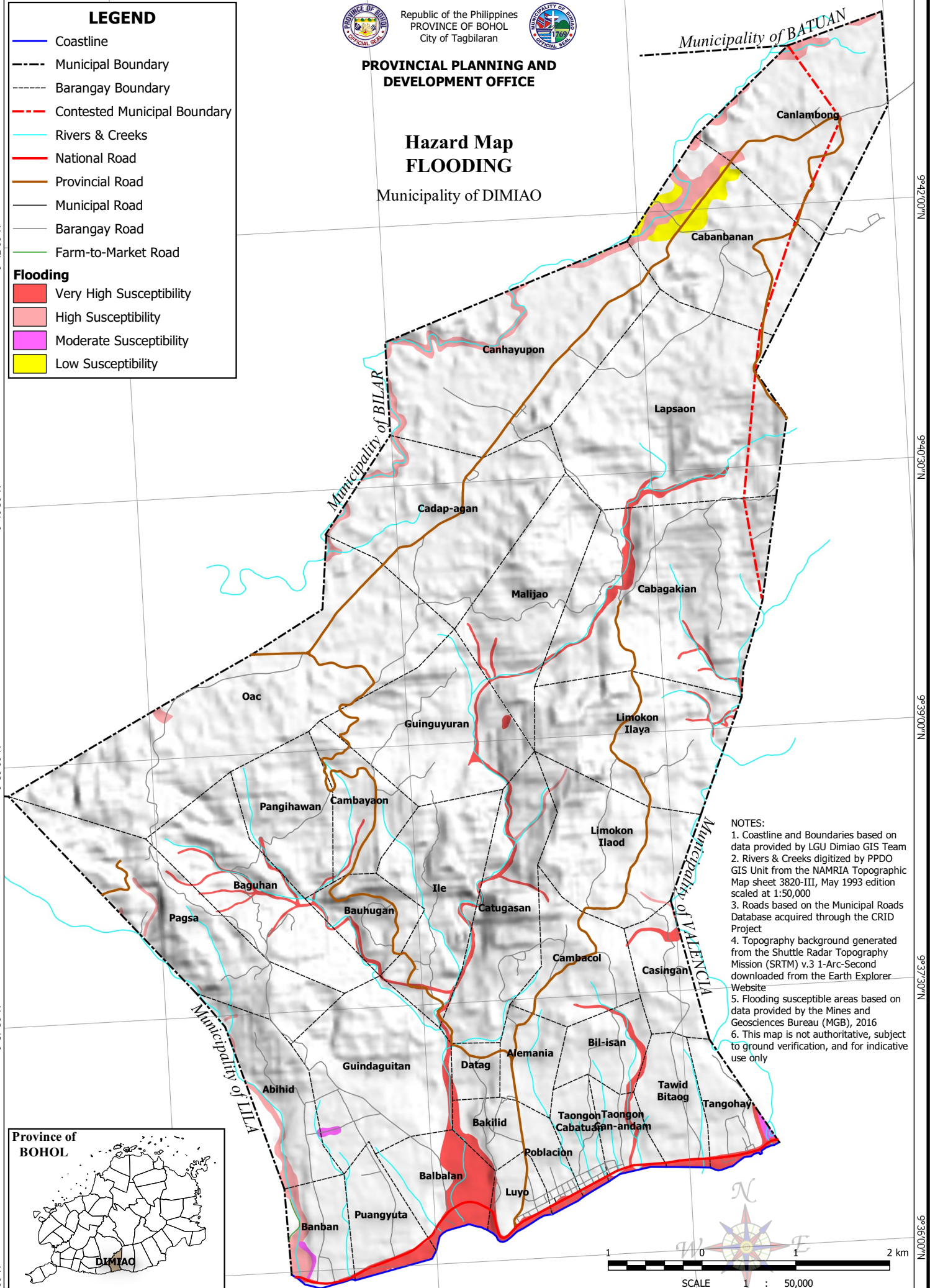
Republic of the Philippines  
PROVINCE OF BOHOL  
City of Tagbilaran



**PROVINCIAL PLANNING AND  
DEVELOPMENT OFFICE**

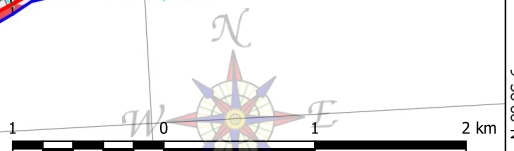
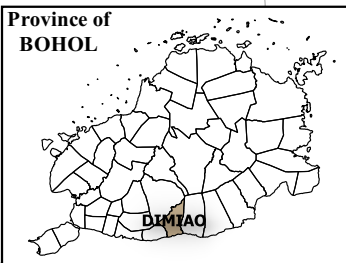
**Hazard Map  
FLOODING**

Municipality of DIMIAO



- NOTES:**
1. Coastline and Boundaries based on data provided by LGU Dimiao GIS Team
  2. Rivers & Creeks digitized by PPDO GIS Unit from the NAMRIA Topographic Map sheet 3820-III, May 1993 edition scaled at 1:50,000
  3. Roads based on the Municipal Roads Database acquired through the CRID Project
  4. Topography background generated from the Shuttle Radar Topography Mission (SRTM) v.3 1-Arc-Second downloaded from the Earth Explorer Website
  5. Flooding susceptible areas based on data provided by the Mines and Geosciences Bureau (MGB), 2016
  6. This map is not authoritative, subject to ground verification, and for indicative use only

Province of  
BOHOL



SCALE 1 : 50,000  
Universal Transverse Mercator (UTM) zone 51 North  
World Geodetic System, 1984 (WGS84)

124°07'30"E

124°09'00"E

124°10'30"E

9°42'00"N

9°40'30"N

9°39'00"N

9°37'30"N

9°36'00"N

9°42'00"N

9°40'30"N

9°39'00"N

9°37'30"N

9°36'00"N