




**LEGEND**

-  Coastline
-  Municipal Boundary
-  Barangay Boundary
-  Contested Municipal Boundary
-  Rivers & Creeks
-  National Road
-  Provincial Road
-  Municipal Road
-  Barangay Road
-  Farm-to-Market Road

**Geologic Formation**

-  Carmen Formation
-  Maribojoc Limestone

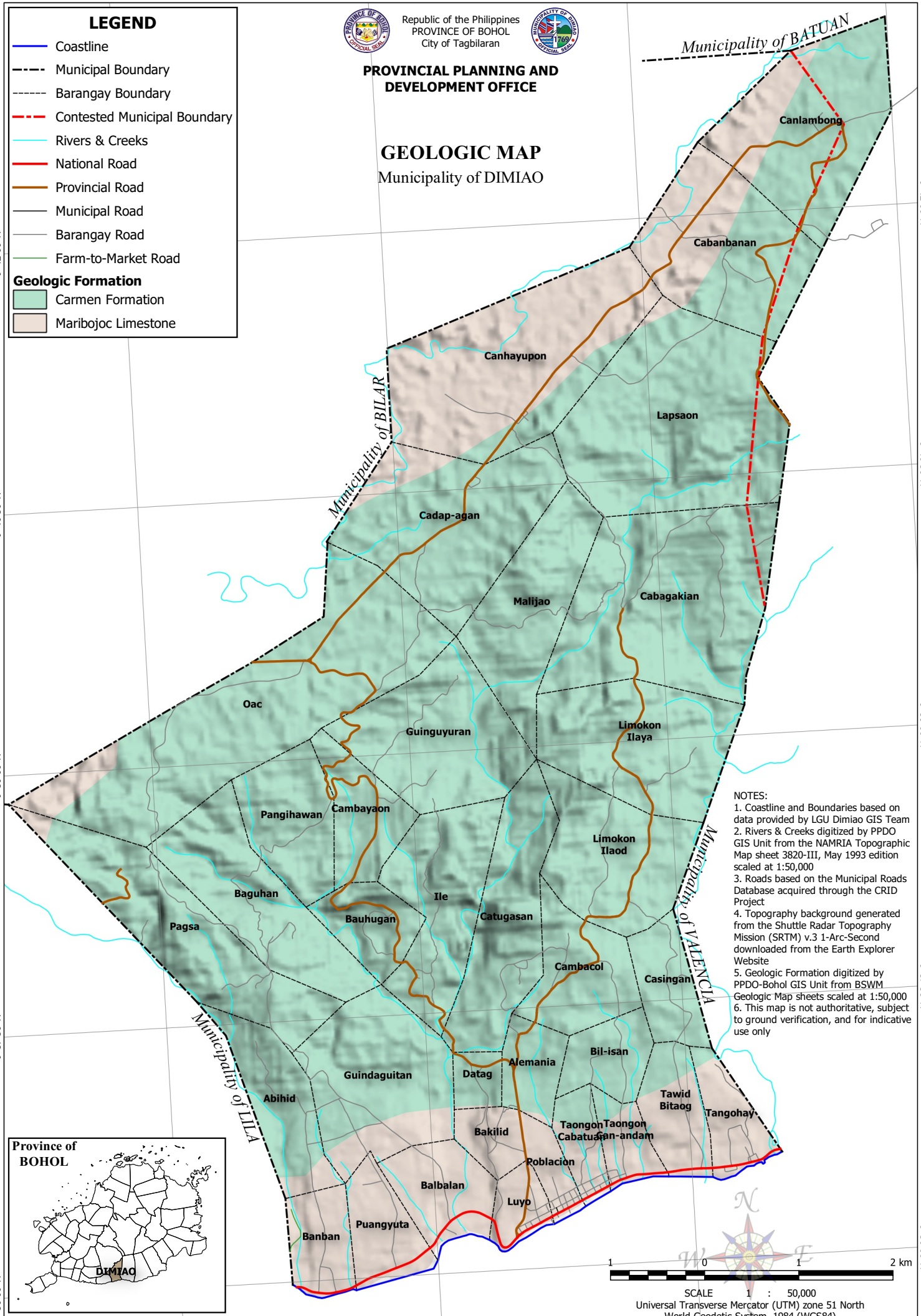


Republic of the Philippines  
PROVINCE OF BOHOL  
City of Tagbilaran

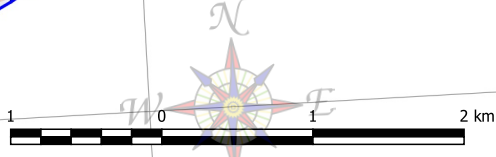
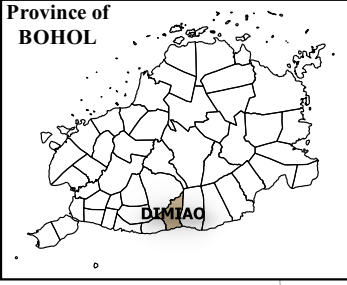


**PROVINCIAL PLANNING AND  
DEVELOPMENT OFFICE**

**GEOLOGIC MAP**  
Municipality of DIMIAO



- NOTES:**
1. Coastline and Boundaries based on data provided by LGU Dimiao GIS Team
  2. Rivers & Creeks digitized by PPDO GIS Unit from the NAMRIA Topographic Map sheet 3820-III, May 1993 edition scaled at 1:50,000
  3. Roads based on the Municipal Roads Database acquired through the CRID Project
  4. Topography background generated from the Shuttle Radar Topography Mission (SRTM) v.3 1-Arc-Second downloaded from the Earth Explorer Website
  5. Geologic Formation digitized by PPDO-Bohol GIS Unit from BSWM Geologic Map sheets scaled at 1:50,000
  6. This map is not authoritative, subject to ground verification, and for indicative use only



9°42'00"N  
9°40'30"N  
9°39'00"N  
9°37'30"N  
9°36'00"N

N.002746  
N.003074  
N.003636  
N.003730  
N.003826