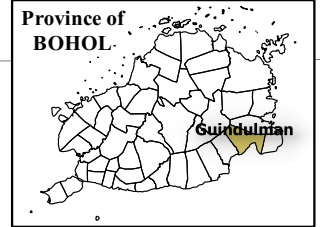


124°23'0" 124°25'0" 124°27'0" 124°29'0" 124°31'0"



Republic of the Philippines  
PROVINCE OF BOHOL  
City of Tagbilaran



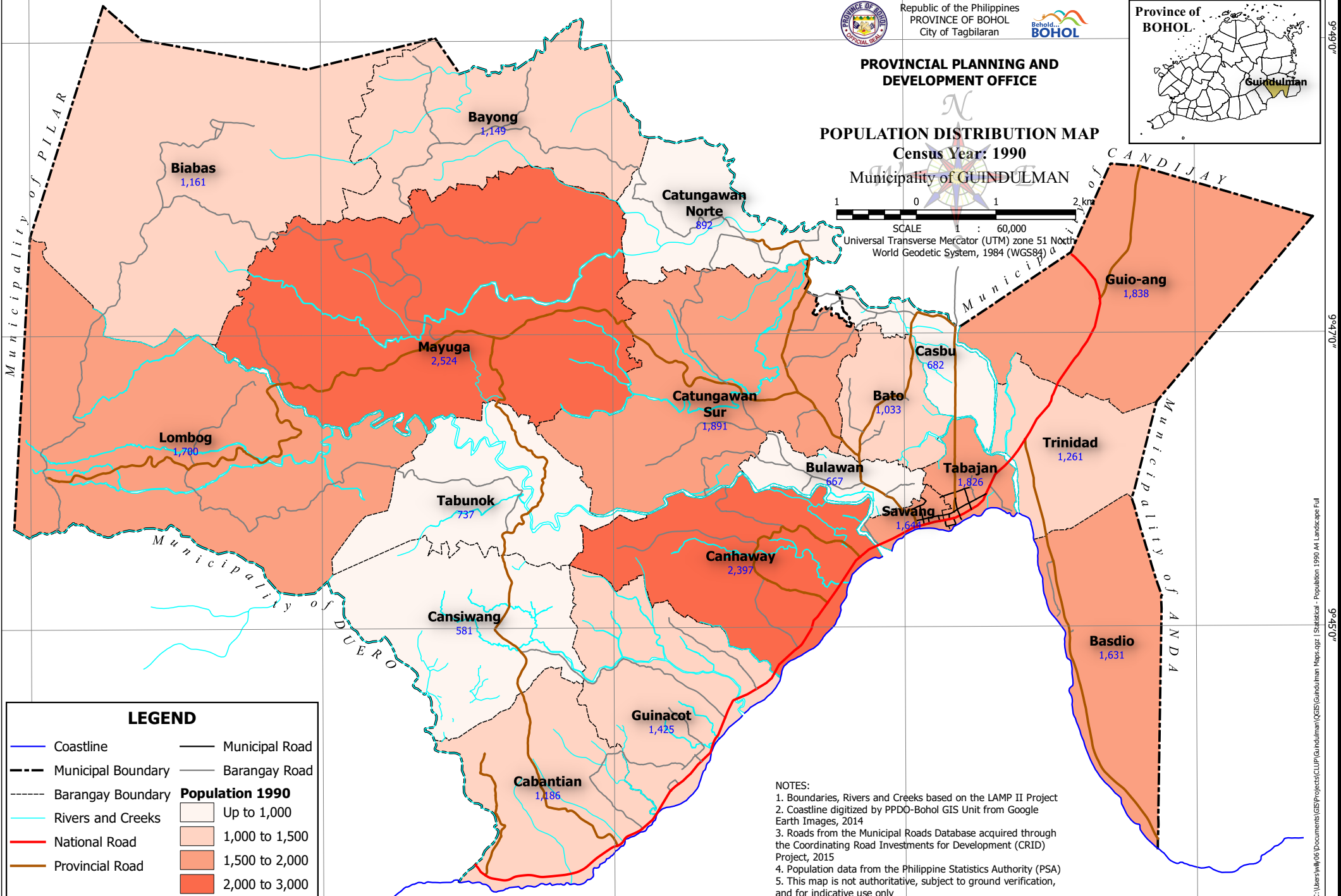
PROVINCIAL PLANNING AND  
DEVELOPMENT OFFICE

### POPULATION DISTRIBUTION MAP

Census Year: 1990

Municipality of GUINDULMAN

1 0 1 2 km  
SCALE 1 : 60,000  
Universal Transverse Mercator (UTM) zone 51 North  
World Geodetic System, 1984 (WGS84)



**LEGEND**

Coastline	Municipal Road
Municipal Boundary	Barangay Road
Barangay Boundary	<b>Population 1990</b>
Rivers and Creeks	Up to 1,000
National Road	1,000 to 1,500
Provincial Road	1,500 to 2,000
	2,000 to 3,000

NOTES:  
 1. Boundaries, Rivers and Creeks based on the LAMP II Project  
 2. Coastline digitized by PPDO-Bohol GIS Unit from Google Earth Images, 2014  
 3. Roads from the Municipal Roads Database acquired through the Coordinating Road Investments for Development (CRID) Project, 2015  
 4. Population data from the Philippine Statistics Authority (PSA)  
 5. This map is not authoritative, subject to ground verification, and for indicative use only

124°23'0" 124°25'0" 124°27'0" 124°29'0" 124°31'0"