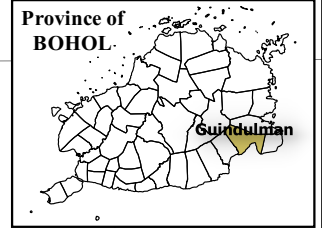


124°23'0" 124°25'0" 124°27'0" 124°29'0" 124°31'0"



Republic of the Philippines
PROVINCE OF BOHOL
City of Tagbilaran

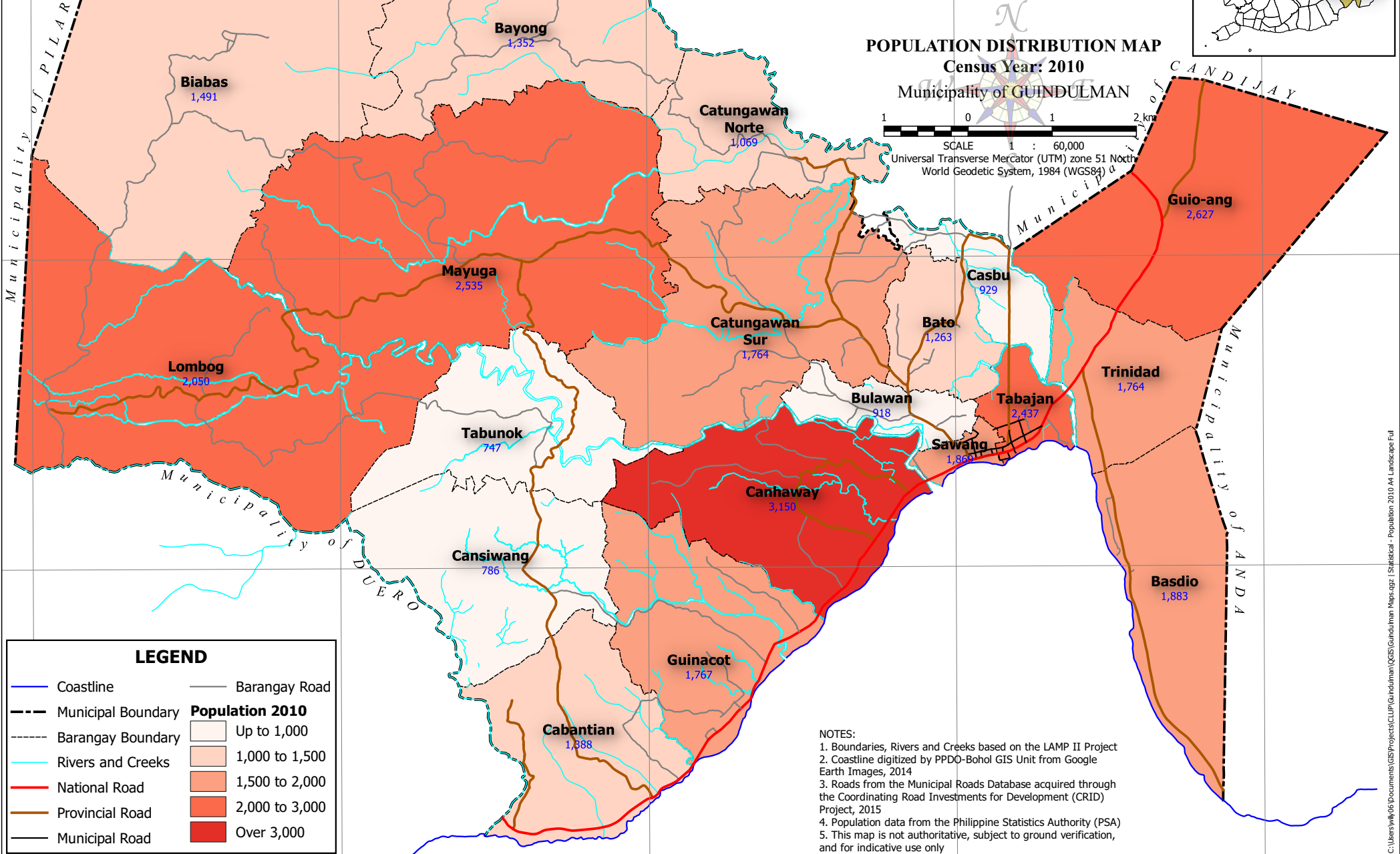


**PROVINCIAL PLANNING AND
DEVELOPMENT OFFICE**

POPULATION DISTRIBUTION MAP
Census Year: 2010

Municipality of **GUINDULMAN**

1 0 1 2 km
SCALE 1 : 60,000
Universal Transverse Mercator (UTM) zone 51 North
World Geodetic System, 1984 (WGS84)



LEGEND

Coastline	Barangay Road
Municipal Boundary	Population 2010
Barangay Boundary	Up to 1,000
Rivers and Creeks	1,000 to 1,500
National Road	1,500 to 2,000
Provincial Road	2,000 to 3,000
Municipal Road	Over 3,000

NOTES:
 1. Boundaries, Rivers and Creeks based on the LAMP II Project
 2. Coastline digitized by PPDO-Bohol GIS Unit from Google Earth Images, 2014
 3. Roads from the Municipal Roads Database acquired through the Coordinating Road Investments for Development (CRID) Project, 2015
 4. Population data from the Philippine Statistics Authority (PSA)
 5. This map is not authoritative, subject to ground verification, and for indicative use only

124°23'0" 124°25'0" 124°27'0" 124°29'0" 124°31'0"