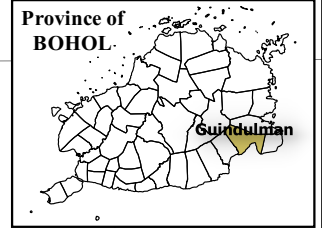


124°23'0" 124°25'0" 124°27'0" 124°29'0" 124°31'0"



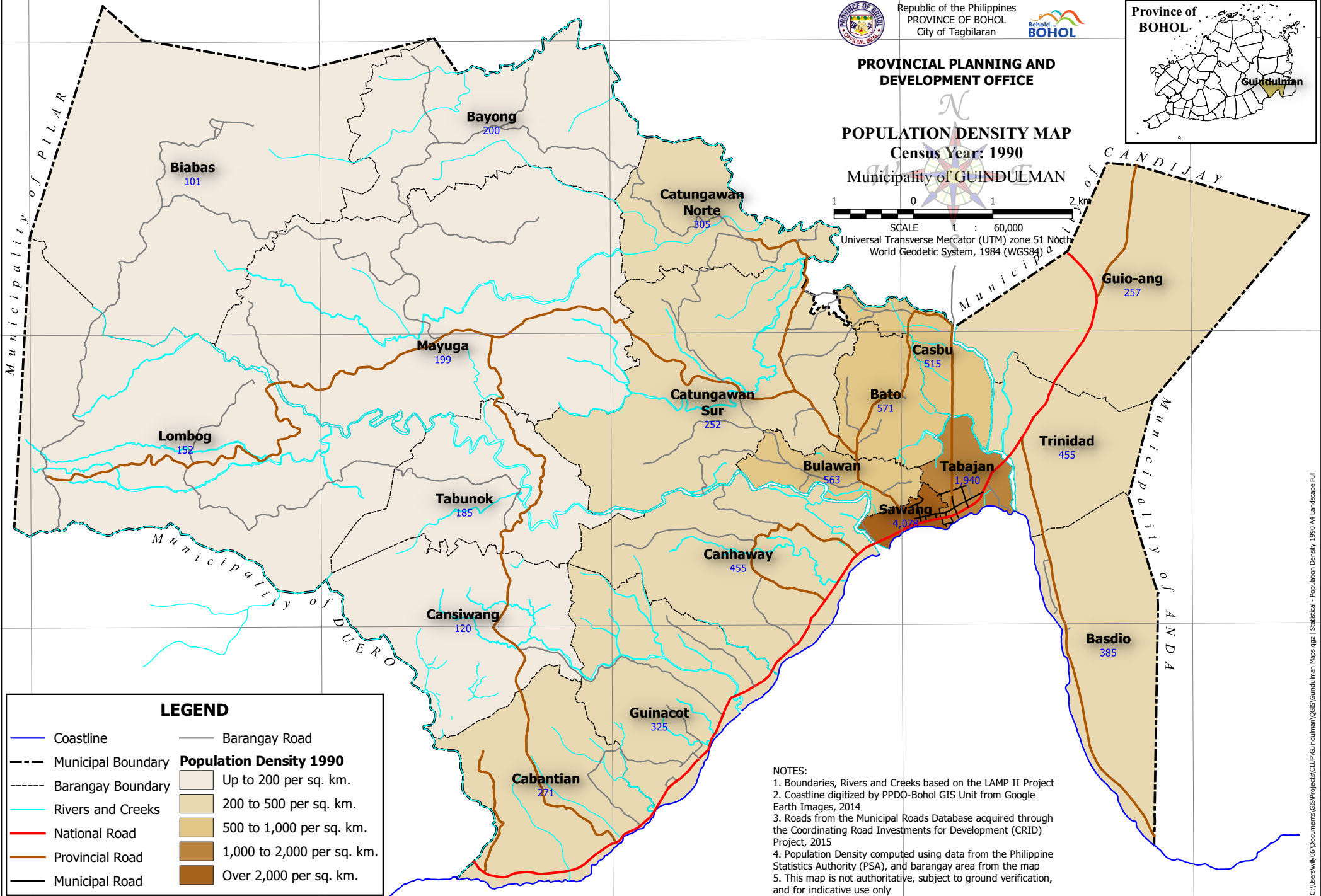
Republic of the Philippines  
PROVINCE OF BOHOL  
City of Tagbilaran



**PROVINCIAL PLANNING AND  
DEVELOPMENT OFFICE**

**POPULATION DENSITY MAP**  
**Census Year: 1990**  
Municipality of **GUINDULMAN**

1 0 1 2 km  
SCALE 1 : 60,000  
Universal Transverse Mercator (UTM) zone 51 North  
World Geodetic System, 1984 (WGS84)



**LEGEND**

Coastline	Barangay Road
Municipal Boundary	<b>Population Density 1990</b>
Barangay Boundary	Up to 200 per sq. km.
Rivers and Creeks	200 to 500 per sq. km.
National Road	500 to 1,000 per sq. km.
Provincial Road	1,000 to 2,000 per sq. km.
Municipal Road	Over 2,000 per sq. km.

**NOTES:**  
1. Boundaries, Rivers and Creeks based on the LAMP II Project  
2. Coastline digitized by PPD0-Bohol GIS Unit from Google Earth Images, 2014  
3. Roads from the Municipal Roads Database acquired through the Coordinating Road Investments for Development (CRID) Project, 2015  
4. Population Density computed using data from the Philippine Statistics Authority (PSA), and barangay area from the map  
5. This map is not authoritative, subject to ground verification, and for indicative use only

124°23'0" 124°25'0" 124°27'0" 124°29'0" 124°31'0"