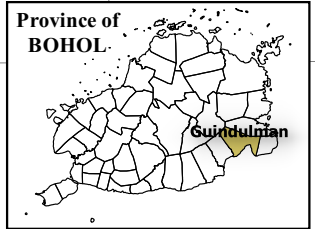


124°23'0" 124°25'0" 124°27'0" 124°29'0" 124°31'0"



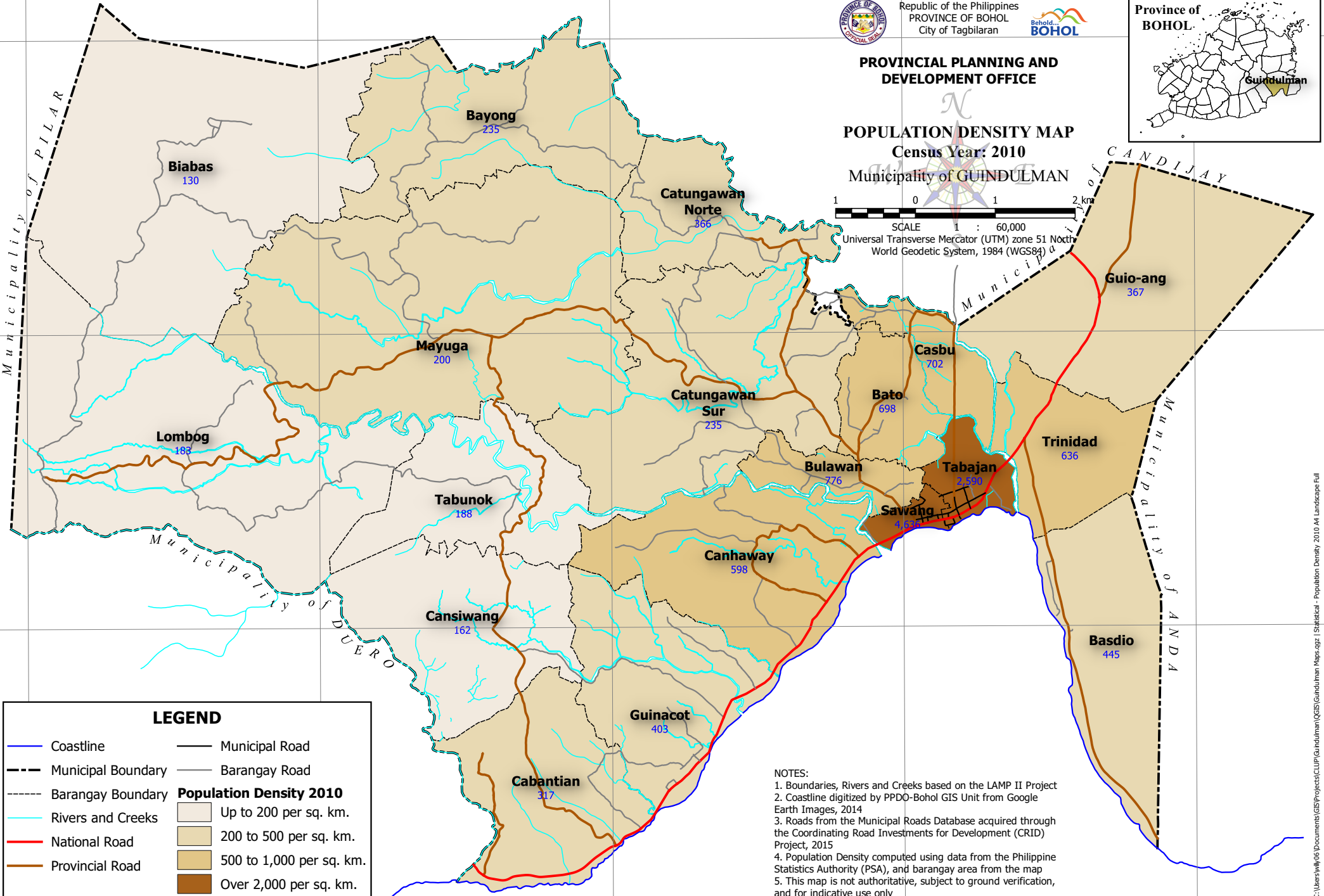
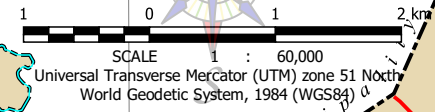
Republic of the Philippines  
PROVINCE OF BOHOL  
City of Tagbilaran



**PROVINCIAL PLANNING AND DEVELOPMENT OFFICE**

**POPULATION DENSITY MAP**  
**Census Year: 2010**

Municipality of **GUINDULMAN**



**LEGEND**

Coastline	Municipal Road
Municipal Boundary	Barangay Road
Barangay Boundary	<b>Population Density 2010</b>
Rivers and Creeks	Up to 200 per sq. km.
National Road	200 to 500 per sq. km.
Provincial Road	500 to 1,000 per sq. km.
	Over 2,000 per sq. km.

**NOTES:**  
 1. Boundaries, Rivers and Creeks based on the LAMP II Project  
 2. Coastline digitized by PPD0-Bohol GIS Unit from Google Earth Images, 2014  
 3. Roads from the Municipal Roads Database acquired through the Coordinating Road Investments for Development (CRID) Project, 2015  
 4. Population Density computed using data from the Philippine Statistics Authority (PSA), and barangay area from the map  
 5. This map is not authoritative, subject to ground verification, and for indicative use only

124°23'0" 124°25'0" 124°27'0" 124°29'0" 124°31'0"