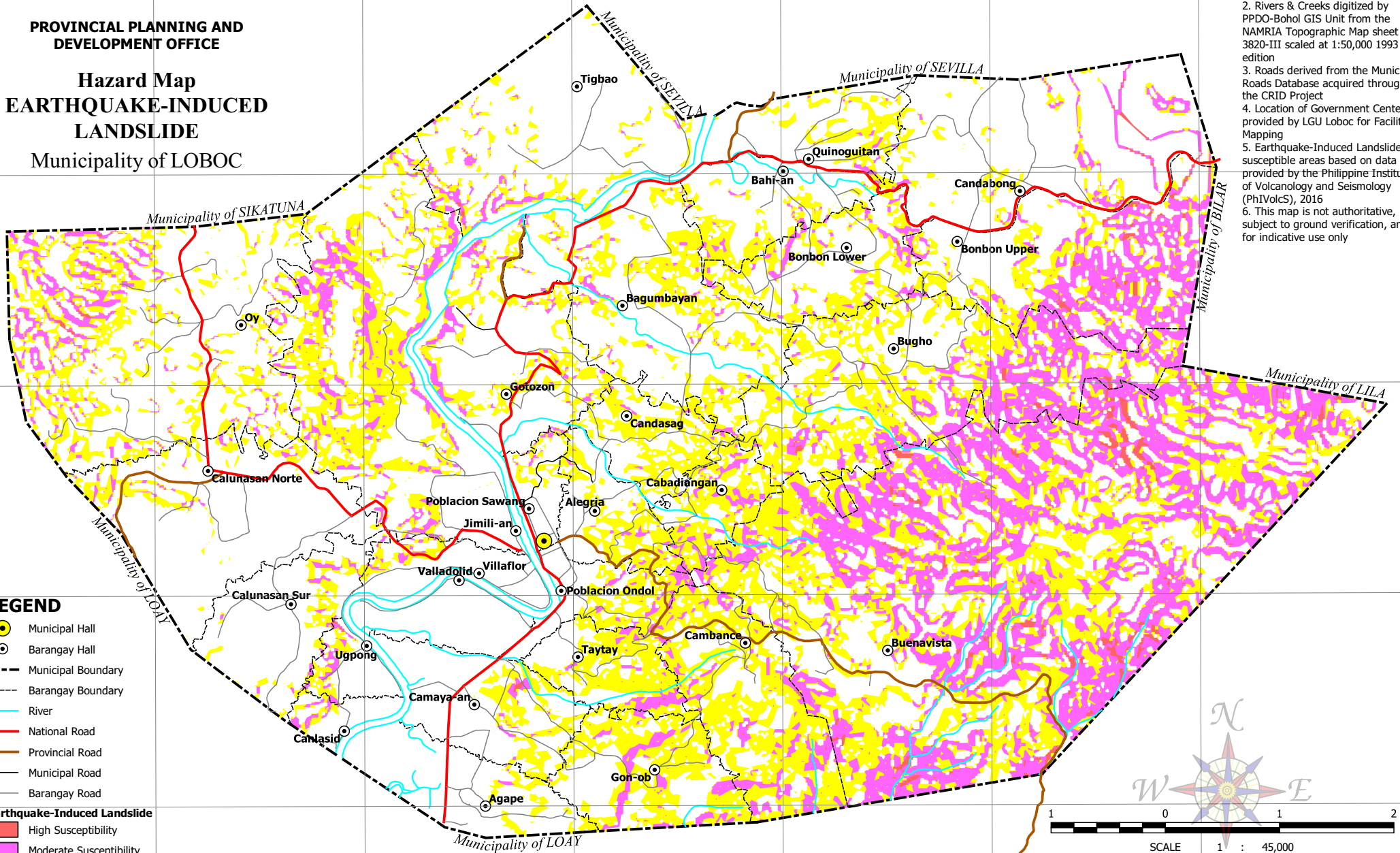


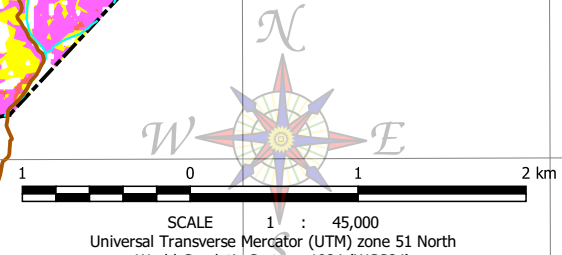
PROVINCIAL PLANNING AND DEVELOPMENT OFFICE

# Hazard Map EARTHQUAKE-INDUCED LANDSLIDE Municipality of LOBOC

- NOTES:
1. Boundaries based on Parcelary Maps provided by the Municipal Assessor's Office
  2. Rivers & Creeks digitized by PPDO-Bohol GIS Unit from the NAMRIA Topographic Map sheet 3820-III scaled at 1:50,000 1993 edition
  3. Roads derived from the Municipal Roads Database acquired through the CRID Project
  4. Location of Government Centers provided by LGU Loboc for Facilities Mapping
  5. Earthquake-Induced Landslide susceptible areas based on data provided by the Philippine Institute of Volcanology and Seismology (PHIVOLCS), 2016
  6. This map is not authoritative, subject to ground verification, and for indicative use only



- LEGEND**
- Municipal Hall
  - Barangay Hall
  - Municipal Boundary
  - Barangay Boundary
  - River
  - National Road
  - Provincial Road
  - Municipal Road
  - Barangay Road
- Earthquake-Induced Landslide**
- High Susceptibility
  - Moderate Susceptibility
  - Low Susceptibility



124°00'E 124°01'E 124°02'E 124°03'E 124°04'E 124°05'E 124°06'E

9°41'N  
9°40'N  
9°39'N  
9°38'N  
9°37'N

124°06'E  
124°06'E  
124°06'E  
124°06'E  
124°06'E