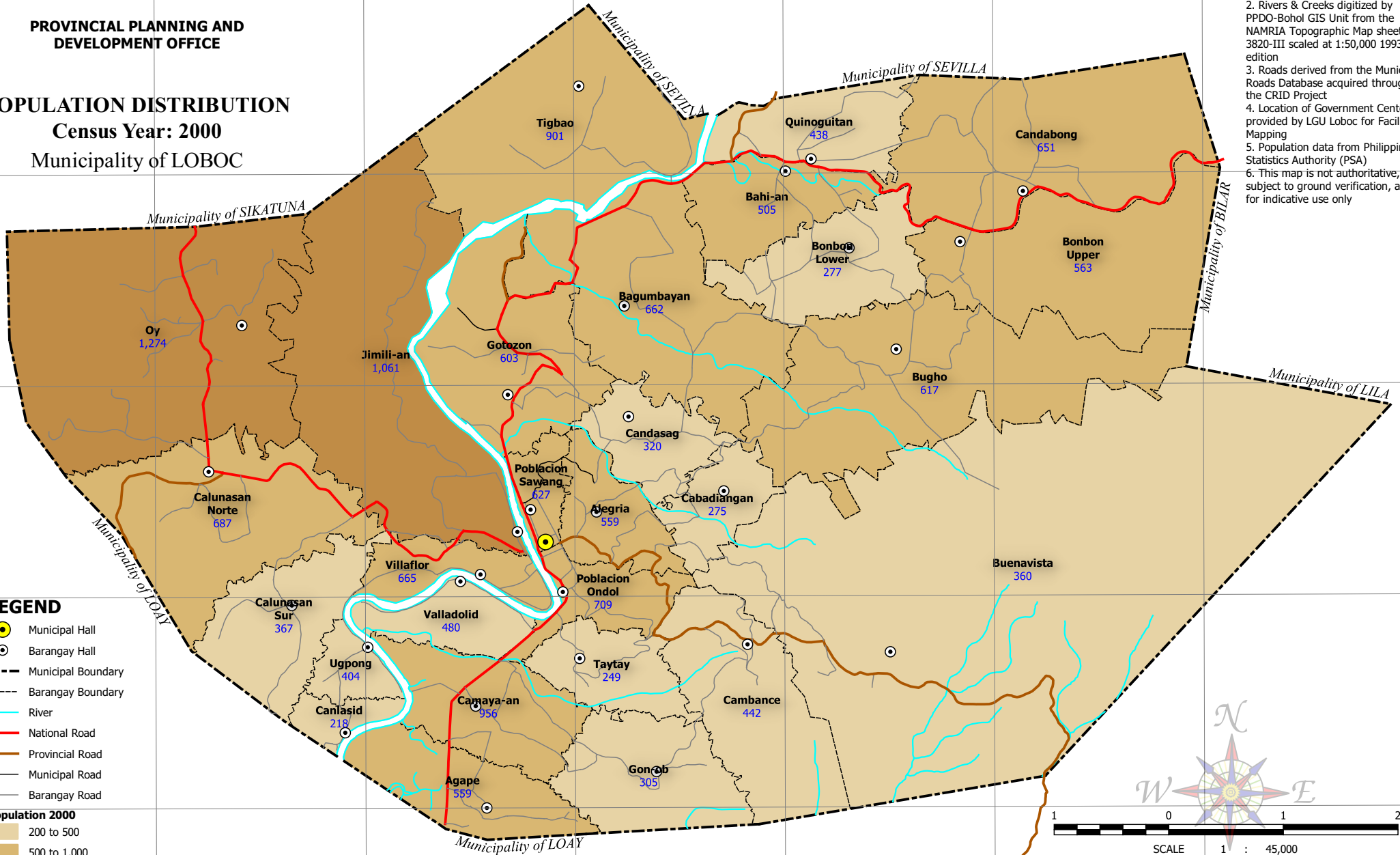


PROVINCIAL PLANNING AND  
DEVELOPMENT OFFICE

**POPULATION DISTRIBUTION**  
**Census Year: 2000**  
Municipality of LOBOC

- NOTES:
1. Boundaries based on Parcelary Maps provided by the Municipal Assessor's Office
  2. Rivers & Creeks digitized by PPDO-Bohol GIS Unit from the NAMRIA Topographic Map sheet 3820-III scaled at 1:50,000 1993 edition
  3. Roads derived from the Municipal Roads Database acquired through the CRID Project
  4. Location of Government Centers provided by LGU Loboc for Facilities Mapping
  5. Population data from Philippine Statistics Authority (PSA)
  6. This map is not authoritative, subject to ground verification, and for indicative use only



- LEGEND**
- Municipal Hall
  - Barangay Hall
  - Municipal Boundary
  - Barangay Boundary
  - River
  - National Road
  - Provincial Road
  - Municipal Road
  - Barangay Road

**Population 2000**

	200 to 500
	500 to 1,000
	1,000 to 1,500

SCALE 1 : 45,000  
Universal Transverse Mercator (UTM) zone 51 North  
World Geodetic System, 1984 (WGS84)

C:\Users\wily06\Documents\GIS\Projects\CLUP\Loboc\GIS\CLUP.gaz | Statistical - Population 2000 A4 Landscape

