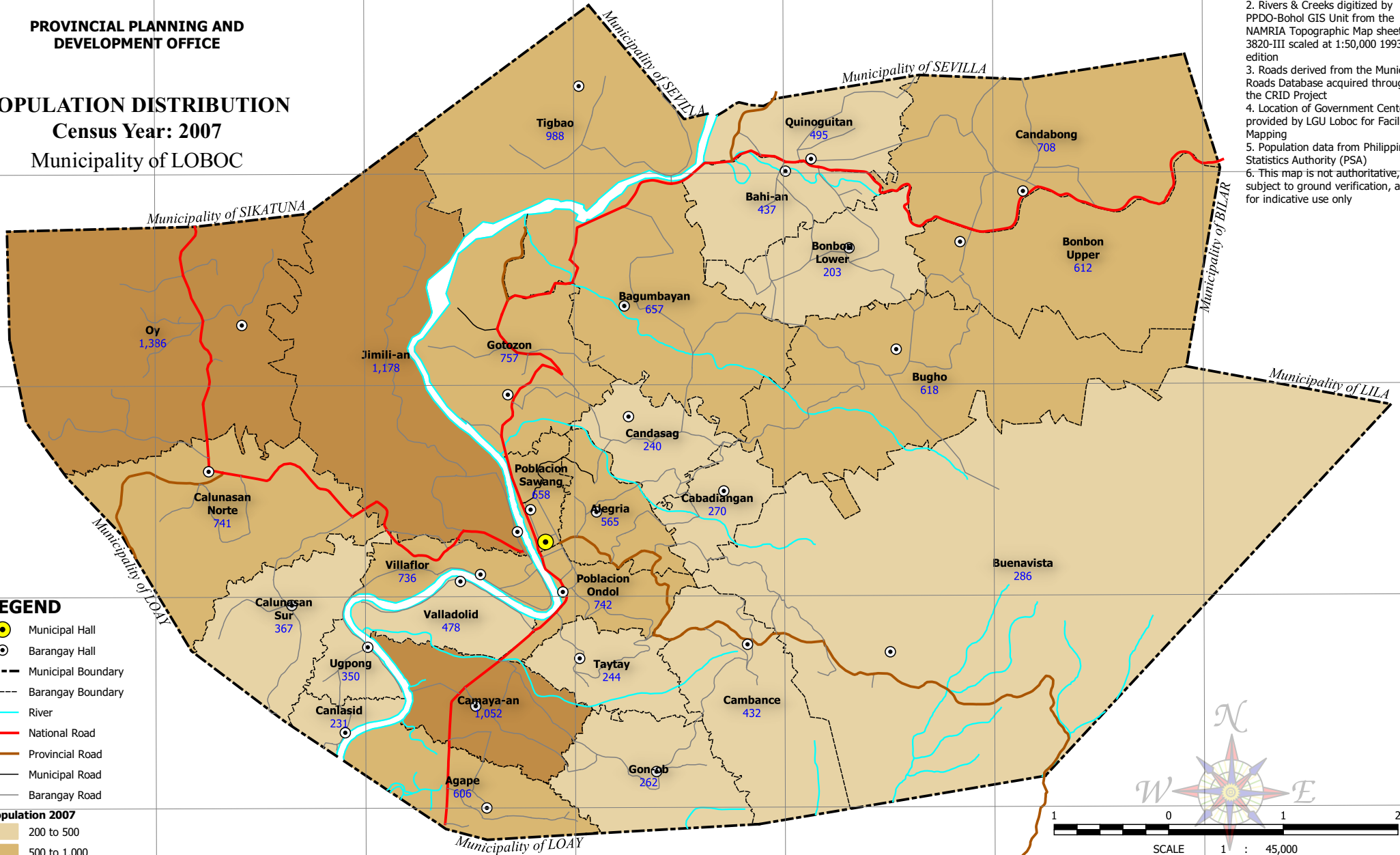


Republic of the Philippines
 PROVINCE OF BOHOL
 City of Tagbilaran

**PROVINCIAL PLANNING AND
 DEVELOPMENT OFFICE**

POPULATION DISTRIBUTION
Census Year: 2007
 Municipality of LOBOC

- NOTES:**
1. Boundaries based on Parcelary Maps provided by the Municipal Assessor's Office
 2. Rivers & Creeks digitized by the NAMRIA Topographic Map sheet 3820-III scaled at 1:50,000 1993 edition
 3. Roads derived from the Municipal Roads Database acquired through the CRID Project
 4. Location of Government Centers provided by LGU Loboc for Facilities Mapping
 5. Population data from Philippine Statistics Authority (PSA)
 6. This map is not authoritative, subject to ground verification, and for indicative use only



LEGEND

- Municipal Hall
- Barangay Hall
- Municipal Boundary
- Barangay Boundary
- River
- National Road
- Provincial Road
- Municipal Road
- Barangay Road

Population 2007

- 200 to 500
- 500 to 1,000
- 1,000 to 1,500

N
W E

1 0 1 2 km

SCALE 1 : 45,000
 Universal Transverse Mercator (UTM) zone 51 North
 World Geodetic System, 1984 (WGS84)

C:\Users\wily06\Documents\GIS\Projects\CLUP\Loboc\GIS\CLUP.gaz | Statistical - Population 2007 A4 Landscape

124°00'E 124°01'E 124°02'E 124°03'E 124°04'E 124°05'E 124°06'E

9°41'N 9°40'N 9°39'N 9°38'N 9°37'N 9°36'N