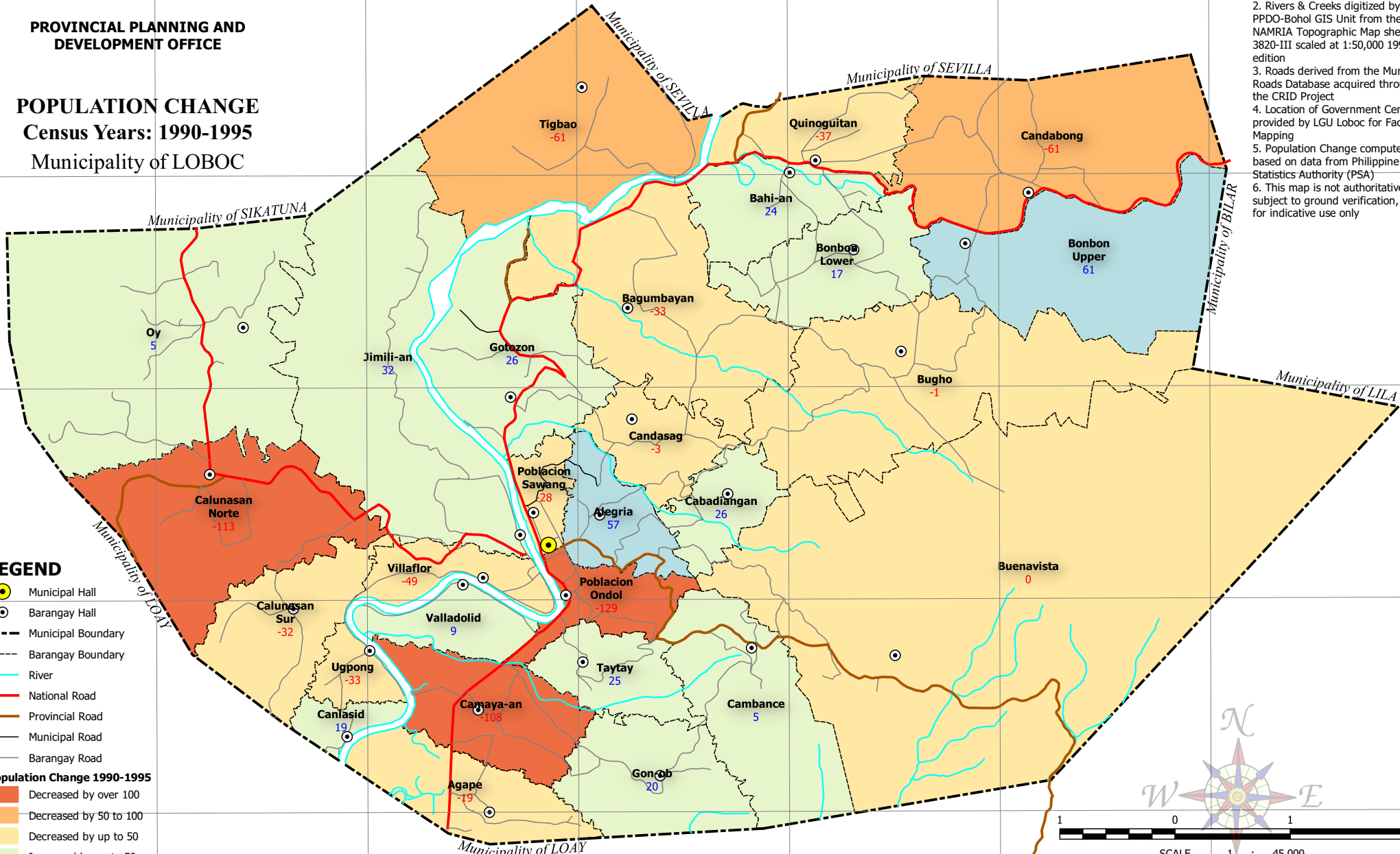


PROVINCIAL PLANNING AND DEVELOPMENT OFFICE

POPULATION CHANGE
Census Years: 1990-1995
Municipality of LOBOC

- NOTES:
1. Boundaries based on Parcelary Maps provided by the Municipal Assessor's Office
 2. Rivers & Creeks digitized by PPDO-Bohol GIS Unit from the NAMRIA Topographic Map sheet 3820-III scaled at 1:50,000 1993 edition
 3. Roads derived from the Municipal Roads Database acquired through the CRID Project
 4. Location of Government Centers provided by LGU Loboc for Facilities Mapping
 5. Population Change computed based on data from Philippine Statistics Authority (PSA)
 6. This map is not authoritative, subject to ground verification, and for indicative use only



LEGEND

- Municipal Hall
- Barangay Hall
- Municipal Boundary
- Barangay Boundary
- River
- National Road
- Provincial Road
- Municipal Road
- Barangay Road

Population Change 1990-1995

- Decreased by over 100
- Decreased by 50 to 100
- Decreased by up to 50
- Increased by up to 50
- Increased by 50 to 100

SCALE 1 : 45,000
Universal Transverse Mercator (UTM) zone 51 North
World Geodetic System, 1984 (WGS84)

124°00'E 124°01'E 124°02'E 124°03'E 124°04'E 124°05'E 124°06'E

9°41'N 9°40'N 9°39'N 9°38'N 9°37'N

Municipality of SEVILLA

Municipality of SIKATUNA

Municipality of LILA

Municipality of LOAY

Municipality of LOBOC

C:\Users\wly\06\Documents\GIS\Projects\CLUP\LOBOC\GIS\CLUP.aprx | Statistical - Population Change 1990-1995 A4 Landscape