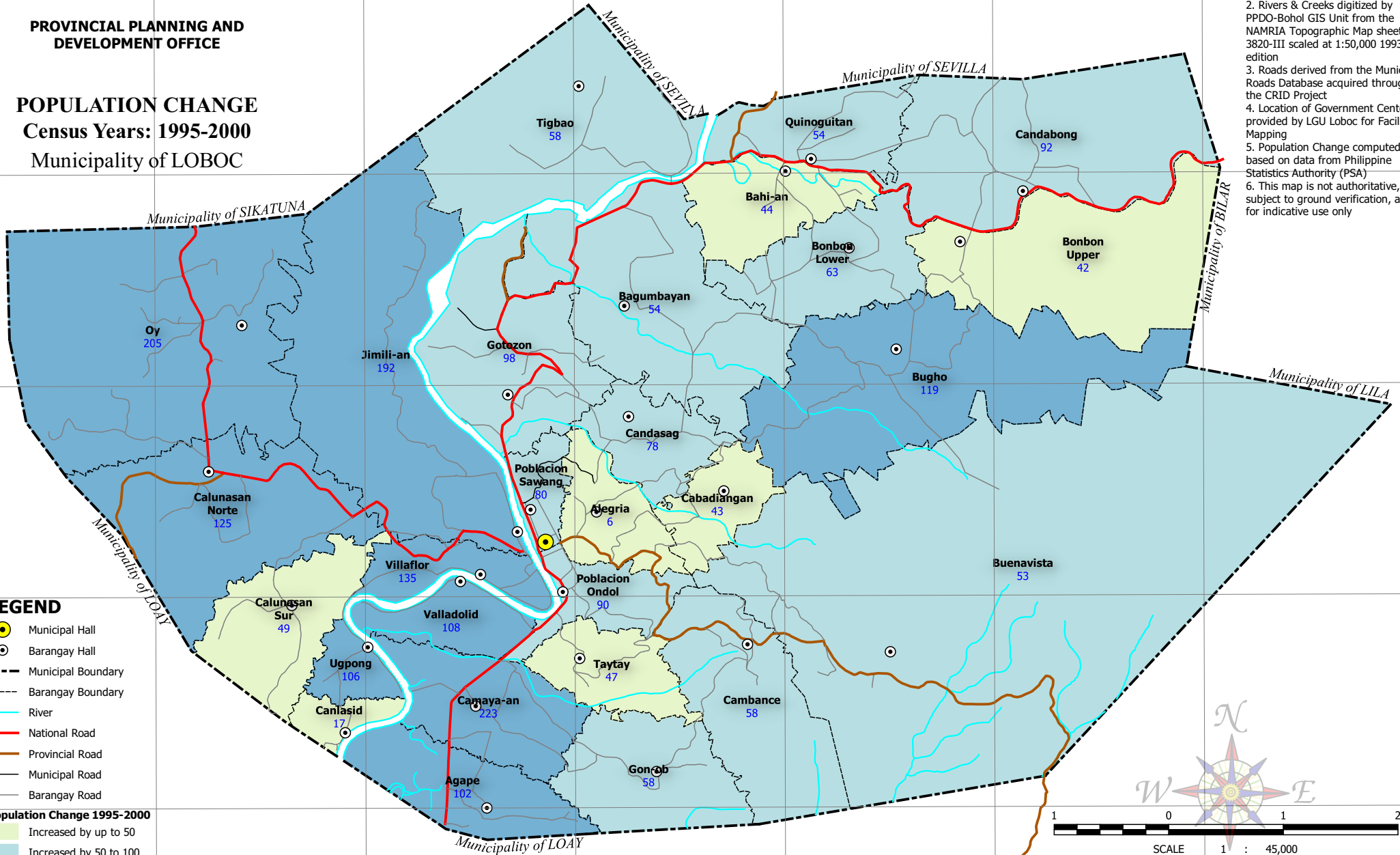


PROVINCIAL PLANNING AND DEVELOPMENT OFFICE

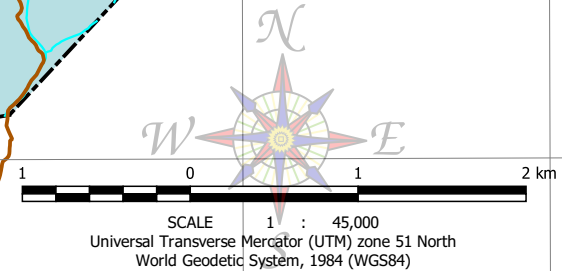
POPULATION CHANGE
Census Years: 1995-2000
Municipality of LOBOC

- NOTES:
1. Boundaries based on Parcelary Maps provided by the Municipal Assessor's Office
 2. Rivers & Creeks digitized by PPDO-Bohol GIS Unit from the NAMRIA Topographic Map sheet 3820-III scaled at 1:50,000 1993 edition
 3. Roads derived from the Municipal Roads Database acquired through the CRID Project
 4. Location of Government Centers provided by LGU Loboc for Facilities Mapping
 5. Population Change computed based on data from Philippine Statistics Authority (PSA)
 6. This map is not authoritative, subject to ground verification, and for indicative use only



- LEGEND**
- Municipal Hall
 - Barangay Hall
 - Municipal Boundary
 - Barangay Boundary
 - River
 - National Road
 - Provincial Road
 - Municipal Road
 - Barangay Road

- Population Change 1995-2000**
- Increased by up to 50
 - Increased by 50 to 100
 - Increased by over 100



124°00'E 124°01'E 124°02'E 124°03'E 124°04'E 124°05'E 124°06'E

9°41'N 9°40'N 9°39'N 9°38'N 9°37'N

124°00'E 124°01'E 124°02'E 124°03'E 124°04'E 124°05'E 124°06'E

C:\Users\willy\06\Documents\GIS\Projects\CLUP\LOBOC\GIS\CLUP.aprx | Statistical - Population Change 1995-2000 A4 Landscape