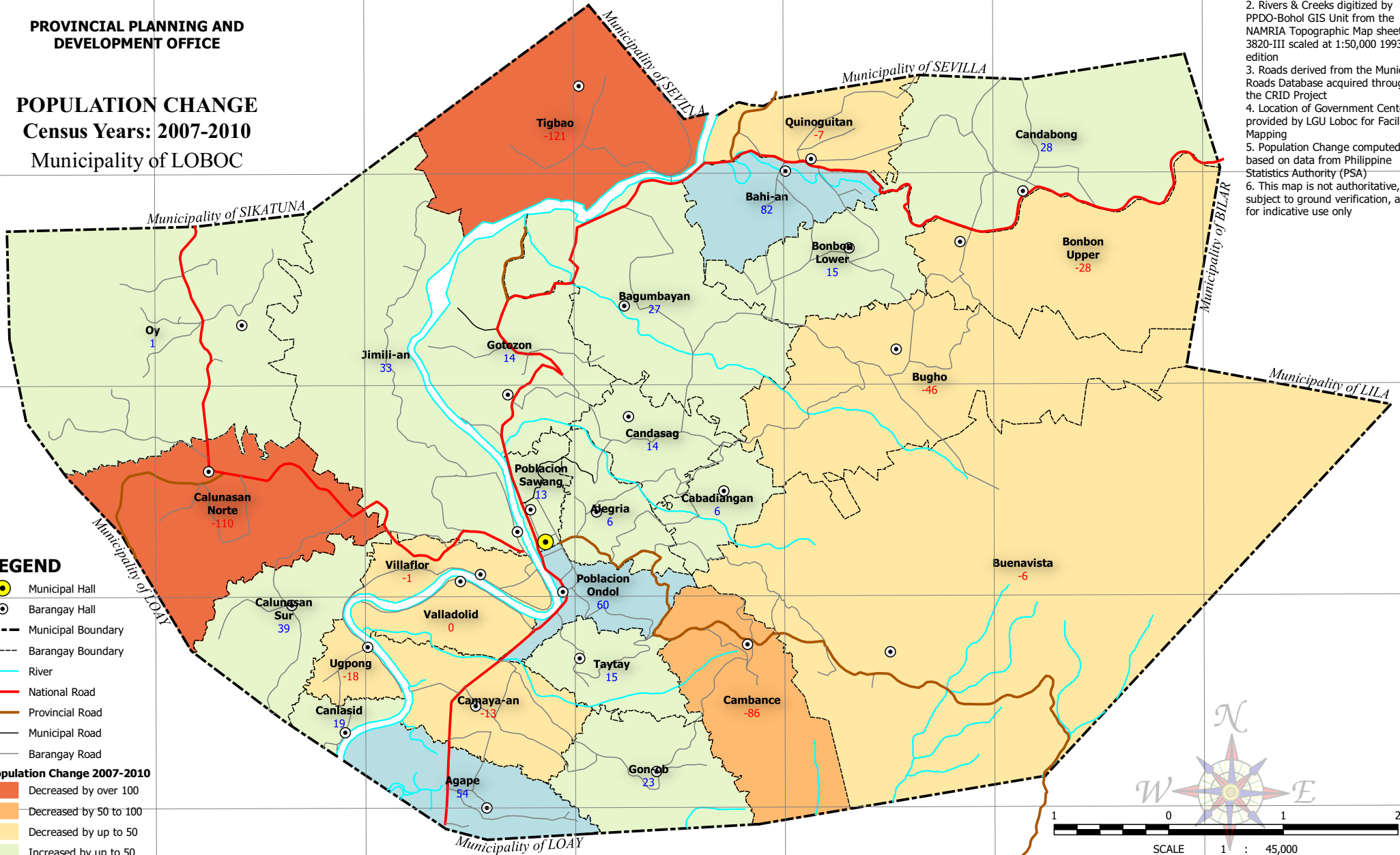


PROVINCIAL PLANNING AND DEVELOPMENT OFFICE

POPULATION CHANGE
Census Years: 2007-2010
Municipality of LOBOC

- NOTES:**
1. Boundaries based on Parcelary Maps provided by the Municipal Assessor's Office
 2. Rivers & Creeks digitized by the NAMRIA Topographic Map sheet 3820-III scaled at 1:50,000 1993 edition
 3. Roads derived from the Municipal Roads Database acquired through the CRID Project
 4. Location of Government Centers provided by LGU Loboc for Facilities Mapping
 5. Population Change computed based on data from Philippine Statistics Authority (PSA)
 6. This map is not authoritative, subject to ground verification, and for indicative use only



LEGEND

- Municipal Hall
- Barangay Hall
- Municipal Boundary
- Barangay Boundary
- River
- National Road
- Provincial Road
- Municipal Road
- Barangay Road

Population Change 2007-2010

- Decreased by over 100
- Decreased by 50 to 100
- Decreased by up to 50
- Increased by up to 50
- Increased by 50 to 100

SCALE 1 : 45,000
Universal Transverse Mercator (UTM) zone 51 North
World Geodetic System, 1984 (WGS84)

124°00'E 124°01'E 124°02'E 124°03'E 124°04'E 124°05'E 124°06'E

9°41'N 9°40'N 9°39'N 9°38'N 9°37'N

Municipality of SEVILLA

Municipality of SIKATUNA

Municipality of LOAY

Municipality of BILAR

Municipality of LILA

1 0 1 2 km

C:\Users\wly\06\Documents\GIS\Projects\CLUP\LOBOC\GIS\CLUP.aprx | Statistical - Population Change 2007-2010 A4 Landscape