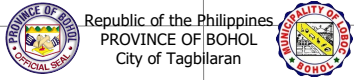


124°00'E 124°01'E 124°02'E 124°03'E 124°04'E 124°05'E 124°06'E

9°41'N  
9°40'N  
9°39'N  
9°38'N  
9°37'N

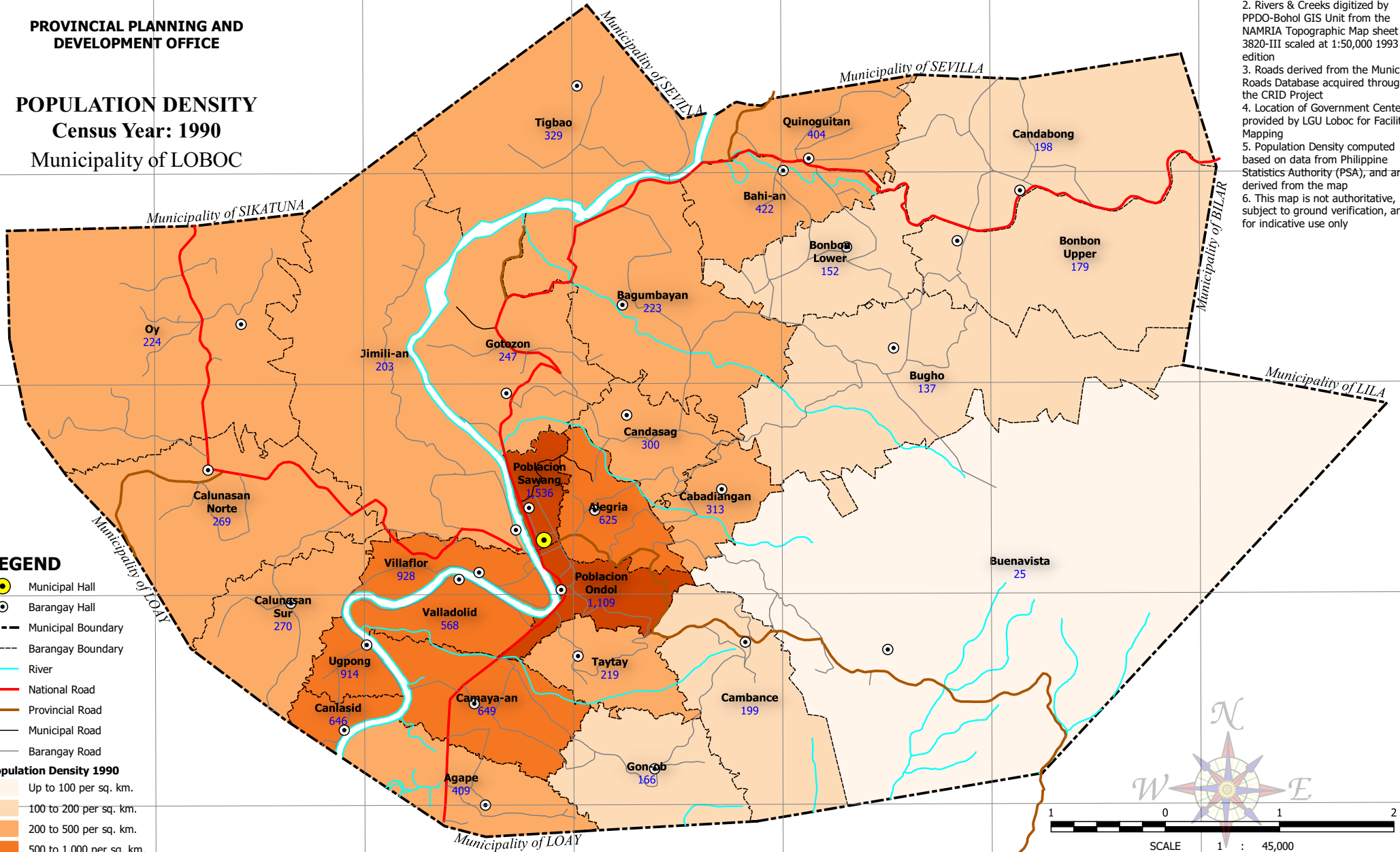


Republic of the Philippines  
PROVINCE OF BOHOL  
City of Tagbilaran

**PROVINCIAL PLANNING AND  
DEVELOPMENT OFFICE**

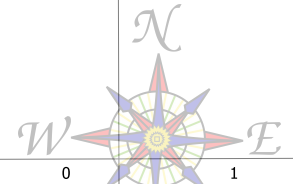
**POPULATION DENSITY  
Census Year: 1990  
Municipality of LOBOC**

- NOTES:**
1. Boundaries based on Parcelary Maps provided by the Municipal Assessor's Office
  2. Rivers & Creeks digitized by PPDO-Bohol GIS Unit from the NAMRIA Topographic Map sheet 3820-III scaled at 1:50,000 1993 edition
  3. Roads derived from the Municipal Roads Database acquired through the CRID Project
  4. Location of Government Centers provided by LGU Loboc for Facilities Mapping
  5. Population Density computed based on data from Philippine Statistics Authority (PSA), and areas derived from the map
  6. This map is not authoritative, subject to ground verification, and for indicative use only



- LEGEND**
- Municipal Hall
  - Barangay Hall
  - - - Municipal Boundary
  - - - Barangay Boundary
  - River
  - National Road
  - Provincial Road
  - Municipal Road
  - Barangay Road

- Population Density 1990**
- Up to 100 per sq. km.
  - 100 to 200 per sq. km.
  - 200 to 500 per sq. km.
  - 500 to 1,000 per sq. km.
  - 1,000 to 2,000 per sq. km.



SCALE 1 : 45,000  
Universal Transverse Mercator (UTM) zone 51 North  
World Geodetic System, 1984 (WGS84)

C:\Users\willy06\Documents\GIS\Projects\CLUP\Loboc\GIS\CLUP.ggz | Statistical - Population Density 1990 A4 Landscape

124°00'E 124°01'E 124°02'E 124°03'E 124°04'E 124°05'E 124°06'E