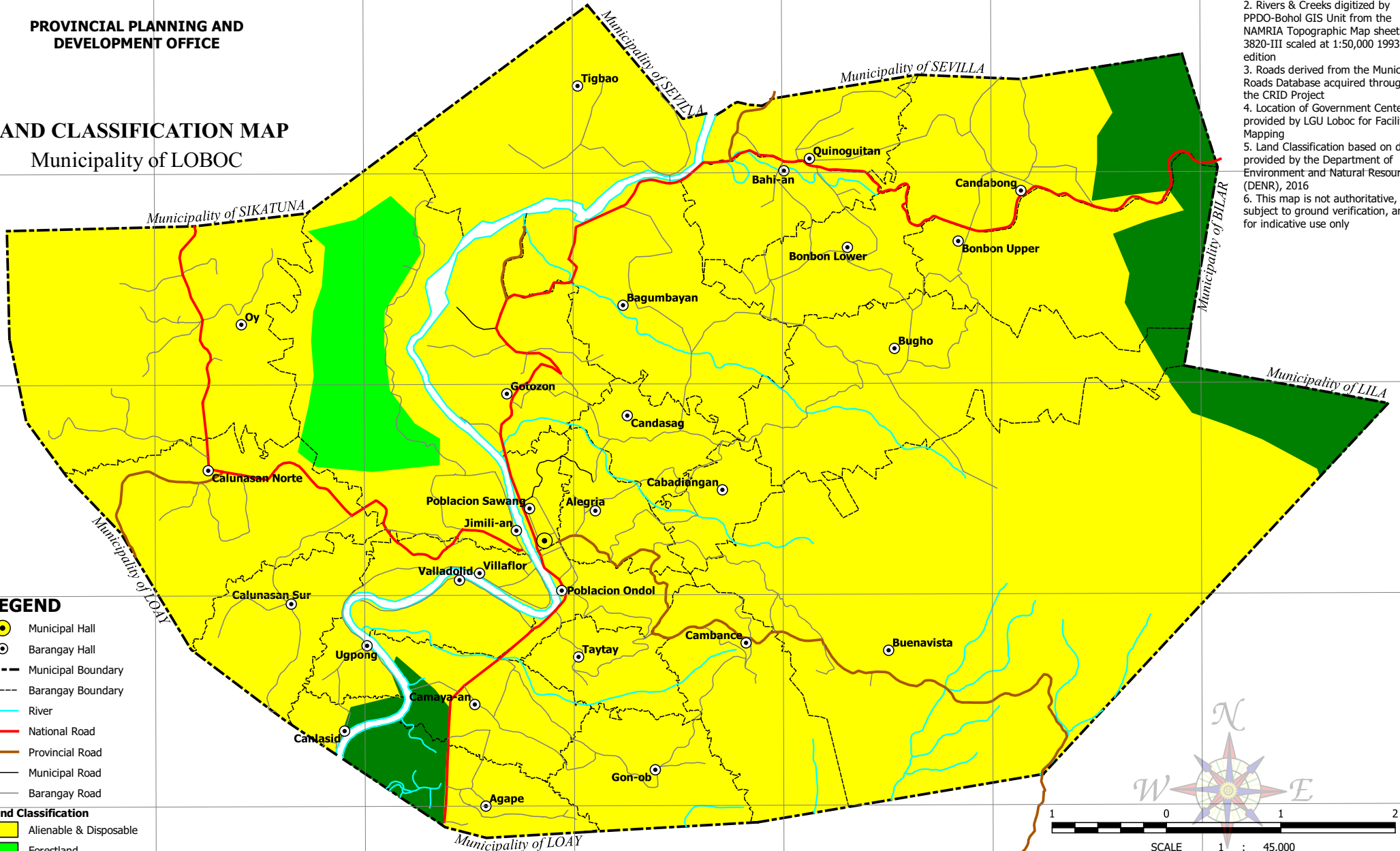


PROVINCIAL PLANNING AND DEVELOPMENT OFFICE

LAND CLASSIFICATION MAP

Municipality of LOBOC

- NOTES:**
1. Boundaries based on Parcellary Maps provided by the Municipal Assessor's Office
 2. Rivers & Creeks digitized by the NAMRIA Topographic Map sheet 3820-III scaled at 1:50,000 1993 edition
 3. Roads derived from the Municipal Roads Database acquired through the CRID Project
 4. Location of Government Centers provided by LGU Loboc for Facilities Mapping
 5. Land Classification based on data provided by the Department of Environment and Natural Resources (DENR), 2016
 6. This map is not authoritative, subject to ground verification, and for indicative use only



LEGEND

- Municipal Hall
- Barangay Hall
- Municipal Boundary
- Barangay Boundary
- River
- National Road
- Provincial Road
- Municipal Road
- Barangay Road

Land Classification

- Alienable & Disposable
- Forestland
- Protected Area

SCALE 1 : 45,000
 Universal Transverse Mercator (UTM) zone 51 North
 World Geodetic System, 1984 (WGS84)

C:\Users\willy06\Documents\GIS\Projects\CLUP\Loboc\GIS\CLUP.ggz | Thematic - Land Classification Map A4 Landscape

124°00'E 124°01'E 124°02'E 124°03'E 124°04'E 124°05'E 124°06'E

9°41'N 9°40'N 9°39'N 9°38'N 9°37'N

Municipality of *SEVILLA*

Municipality of *SIKATUNA*

Municipality of *LOAY*

Municipality of *BILAR*

Municipality of *LILA*

Tigbao

Quinoguitan

Bahi-an

Candabong

Bonbon Lower

Bonbon Upper

Bagumbayan

Bugho

Gotozon

Candasag

Cabadiangan

Poblacion Sawang

Alegria

Jimili-an

Villadajido

Villaflor

Poblacion Ondol

Cambance

Buenavista

Ugpong

Camaya-an

Canlasid

Agape

Gon-ob

Calunasan Norte

Calunasan Sur

Oy