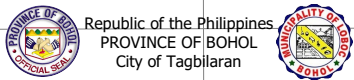


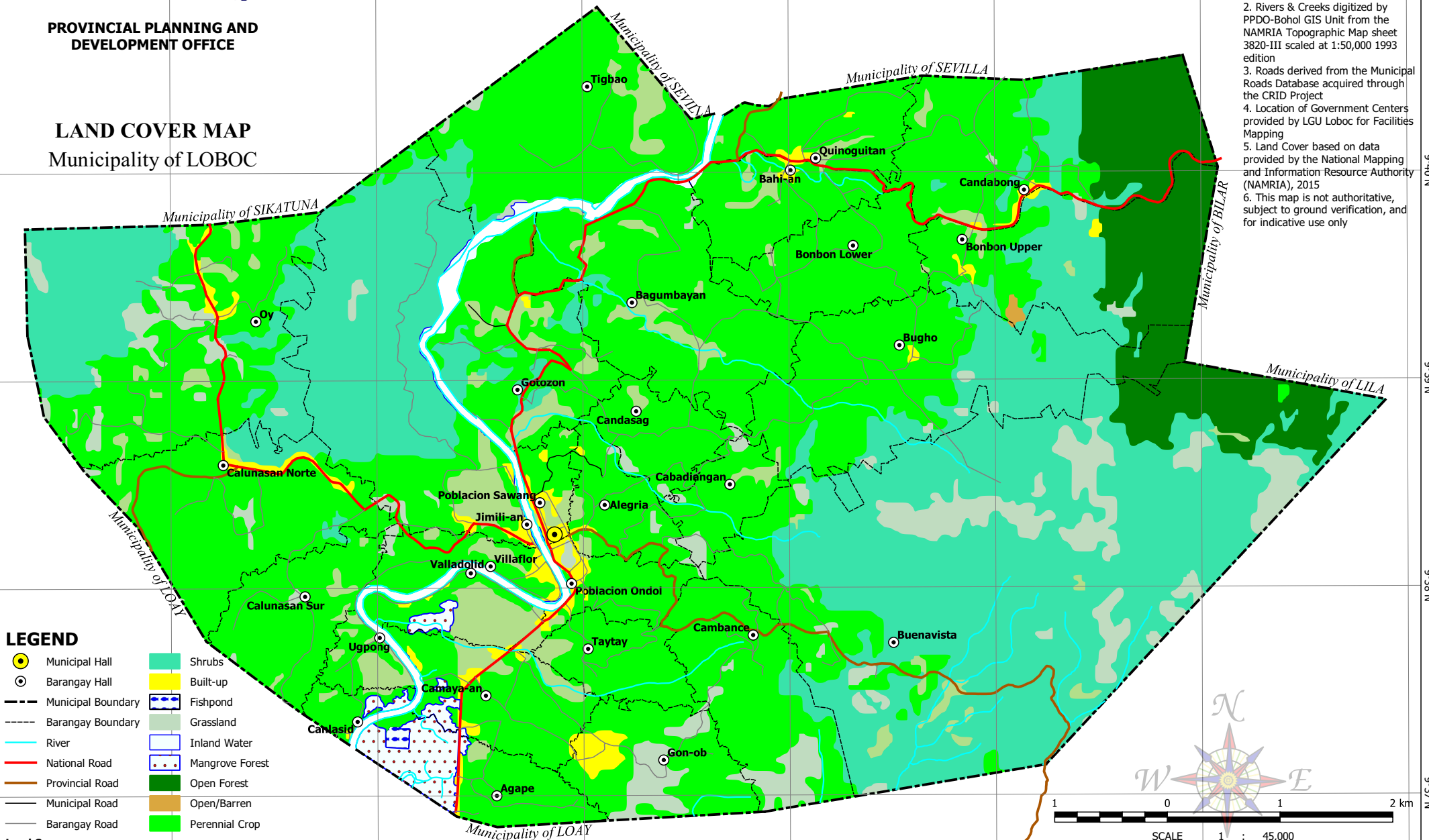
124°00'E 124°01'E 124°02'E 124°03'E 124°04'E 124°05'E 124°06'E



PROVINCIAL PLANNING AND
DEVELOPMENT OFFICE

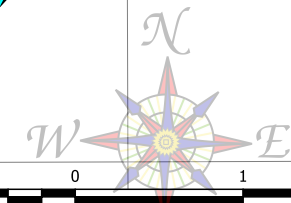
LAND COVER MAP Municipality of LOBOC

- NOTES:
1. Boundaries based on Parcellary Maps provided by the Municipal Assessor's Office
 2. Rivers & Creeks digitized by PPDO-Bohol GIS Unit from the NAMRIA Topographic Map sheet 3820-III scaled at 1:50,000 1993 edition
 3. Roads derived from the Municipal Roads Database acquired through the CRID Project
 4. Location of Government Centers provided by LGU Loboc for Facilities Mapping
 5. Land Cover based on data provided by the National Mapping and Information Resource Authority (NAMRIA), 2015
 6. This map is not authoritative, subject to ground verification, and for indicative use only



LEGEND

- | | |
|--------------------|-----------------|
| Municipal Hall | Shrubs |
| Barangay Hall | Built-up |
| Municipal Boundary | Fishpond |
| Barangay Boundary | Grassland |
| River | Inland Water |
| National Road | Mangrove Forest |
| Provincial Road | Open Forest |
| Municipal Road | Open/Barren |
| Barangay Road | Perennial Crop |
| Land Cover | |
| Annual Crop | |



SCALE 1 : 45,000
Universal Transverse Mercator (UTM) zone 51 North
World Geodetic System, 1984 (WGS84)

C:\Users\wily06\Documents\GIS\Projects\CLUP\Loboc\GIS\CLUP.gaz | Thematic - Land Cover Map A4 Landscape

124°00'E 124°01'E 124°02'E 124°03'E 124°04'E 124°05'E 124°06'E

9°41'N
9°40'N
9°39'N
9°38'N
9°37'N

9°41'N
9°40'N
9°39'N
9°38'N
9°37'N