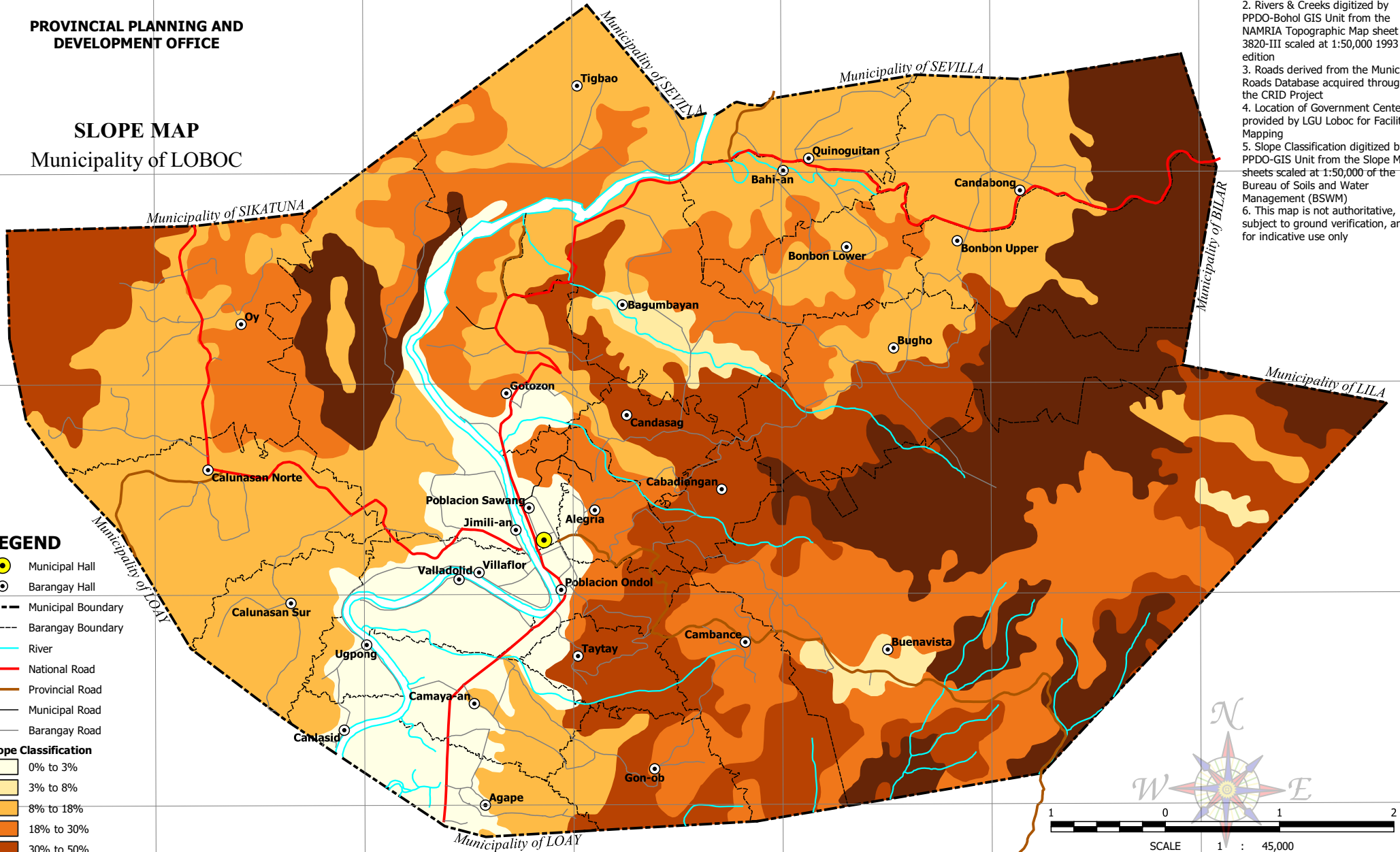


Republic of the Philippines
 PROVINCE OF BOHOL
 City of Tagbilaran

**PROVINCIAL PLANNING AND
 DEVELOPMENT OFFICE**

SLOPE MAP
 Municipality of LOBOC

- NOTES:**
1. Boundaries based on Parcelary Maps provided by the Municipal Assessor's Office
 2. Rivers & Creeks digitized by the NAMRIA Topographic Map sheet 3820-III scaled at 1:50,000 1993 edition
 3. Roads derived from the Municipal Roads Database acquired through the CRID Project
 4. Location of Government Centers provided by LGU Loboc for Facilities Mapping
 5. Slope Classification digitized by PPDO-GIS Unit from the Slope Map sheets scaled at 1:50,000 of the Bureau of Soils and Water Management (BSWM)
 6. This map is not authoritative, subject to ground verification, and for indicative use only



- LEGEND**
- Municipal Hall
 - Barangay Hall
 - Municipal Boundary
 - Barangay Boundary
 - River
 - National Road
 - Provincial Road
 - Municipal Road
 - Barangay Road
- Slope Classification**
- 0% to 3%
 - 3% to 8%
 - 8% to 18%
 - 18% to 30%
 - 30% to 50%
 - Over 50%

