

123°50'E

123°52'E



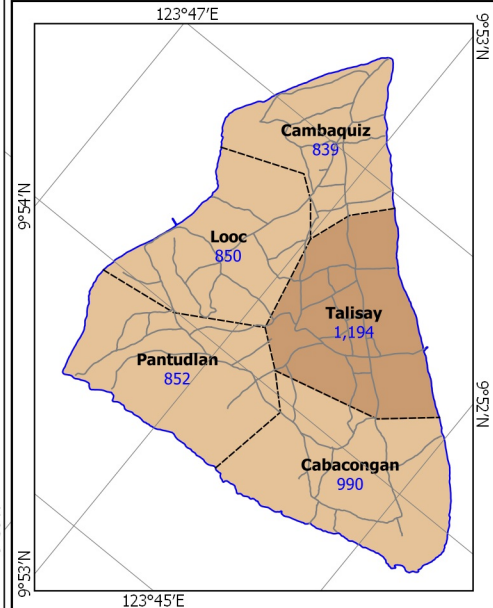
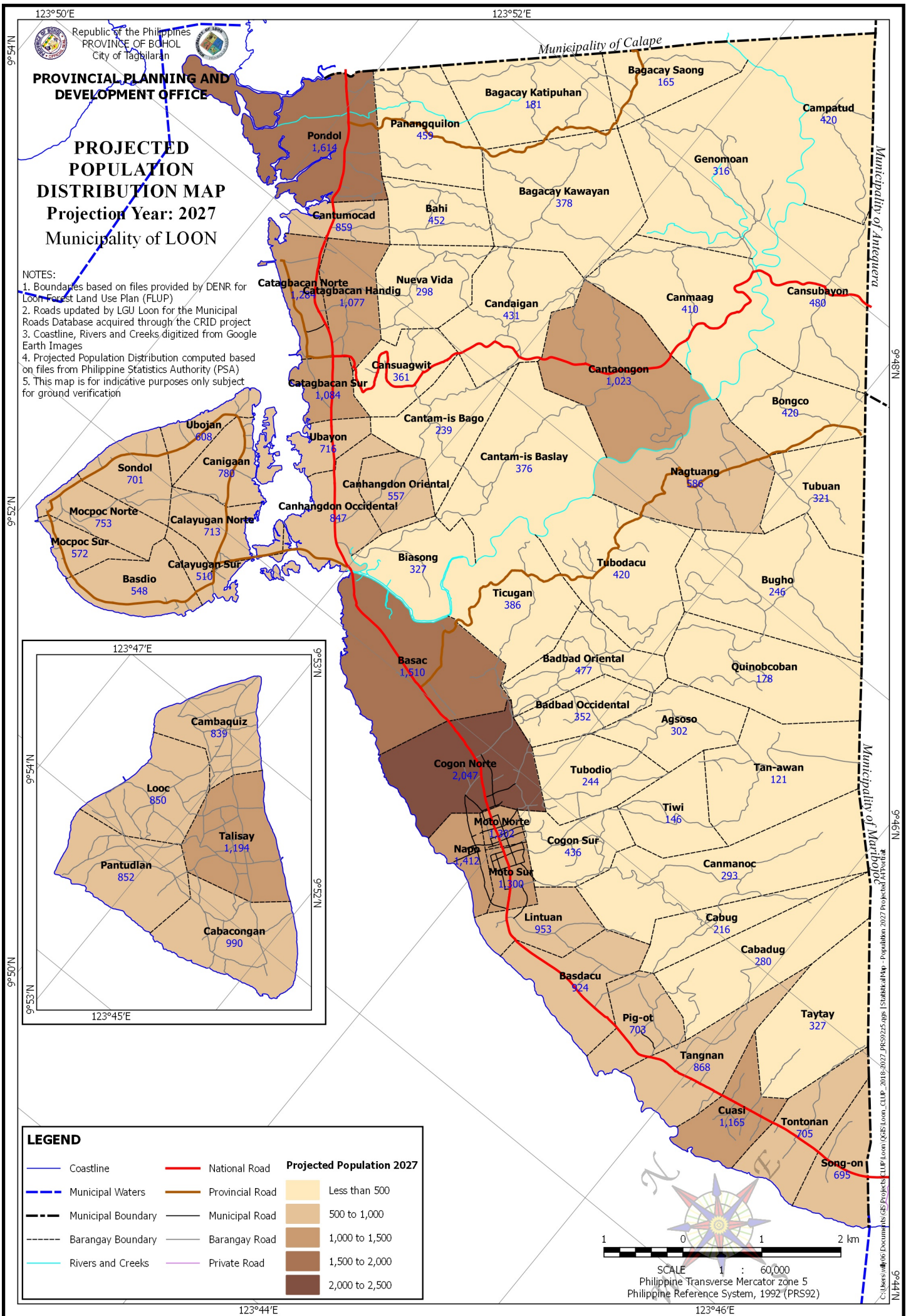
Republic of the Philippines  
PROVINCE OF BOHOL  
City of Tagbilaran

**PROVINCIAL PLANNING AND  
DEVELOPMENT OFFICE**

**PROJECTED  
POPULATION  
DISTRIBUTION MAP  
Projection Year: 2027  
Municipality of LOON**

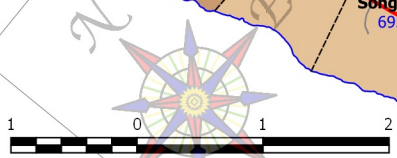
**NOTES:**

1. Boundaries based on files provided by DENR for Loon Forest Land Use Plan (FLUP)
2. Roads updated by LGU Loon for the Municipal Roads Database acquired through the CRID project
3. Coastline, Rivers and Creeks digitized from Google Earth Images
4. Projected Population Distribution computed based on files from Philippine Statistics Authority (PSA)
5. This map is for indicative purposes only subject for ground verification



**LEGEND**

	Coastline		National Road	<b>Projected Population 2027</b>	
	Municipal Waters		Provincial Road		Less than 500
	Municipal Boundary		Municipal Road		500 to 1,000
	Barangay Boundary		Barangay Road		1,000 to 1,500
	Rivers and Creeks		Private Road		1,500 to 2,000
					2,000 to 2,500



123°44'E

123°46'E

N 81° 06'

N 49° 06'

N 14° 06'

C:\Users\wlf\Documents\GIS\Projects\FLUP\Loon\00GIS\Loon\_CLLUP\_2016-2027\_PRES92\25-01ps - Population 2027 Projected Attribut