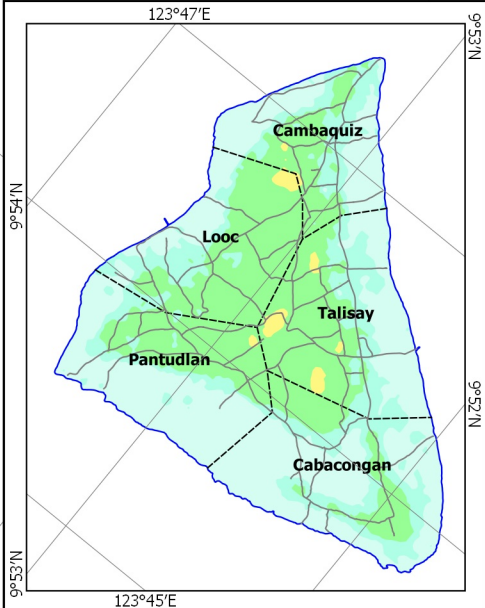
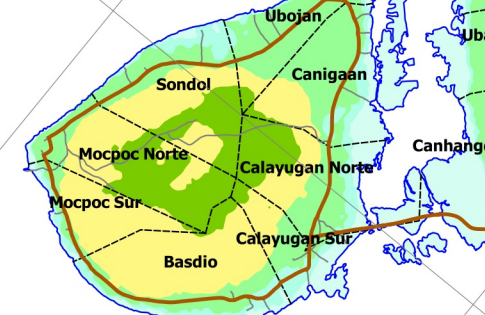


**PROVINCIAL PLANNING AND DEVELOPMENT OFFICE**

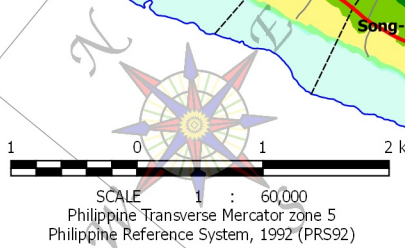
**ELEVATION MAP  
 Municipality of LOON**

- NOTES:
1. Boundaries based on files provided by DENR for Loon Forest Land Use Plan (FLUP)
  2. Roads updated by LGU Loon for the Municipal Roads Database acquired through the CRID project
  3. Coastline, Rivers and Creeks digitized from Google Earth Images
  4. Elevation Range generated from the Shuttle Radar Topography Mission (SRTM) v3 1 Arc-Second Global Digital Model (GDEM) downloaded from the United States Geological Survey (USGS) EarthExplorer website
  5. This map is for indicative purposes only subject for ground Verification



**LEGEND**

Coastline	Municipal Road	20 to 50 meters
Municipal Waters	Barangay Road	50 to 100 meters
Municipal Boundary	Private Road	100 to 150 meters
Barangay Boundary	<b>Elevation Range</b>	150 to 200 meters
Rivers and Creeks	0 to 5 meters	200 to 300 meters
National Road	5 to 10 meters	300 to 400 meters
Provincial Road	10 to 20 meters	400 to 500 meters



Municipality of Calape  
 Municipality of Anequena  
 Municipality of Morbojoc

C:\Users\wlf\Documents\GIS\Projects\FLUP\Loon\GIS\Loon\_GCLUP\_2016-2027\_PRES92.dwg | TheMapas - Elevation Map At Point