

123°50'E 123°52'E

Republic of the Philippines  
PROVINCE OF BOHOL  
City of Tagbilaran

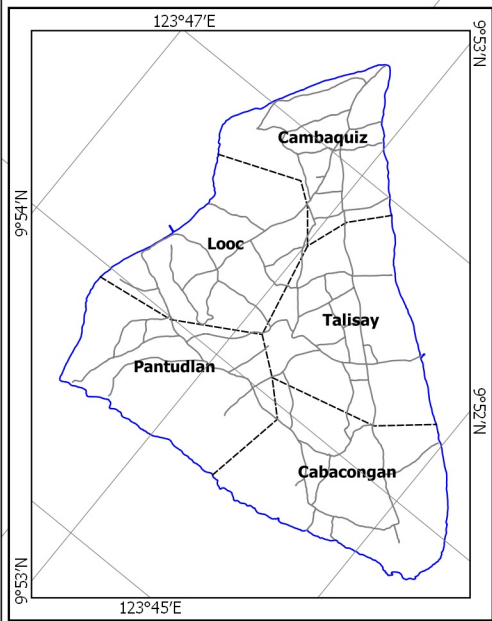
PROVINCIAL PLANNING AND  
DEVELOPMENT OFFICE

# FORESTLAND MAP

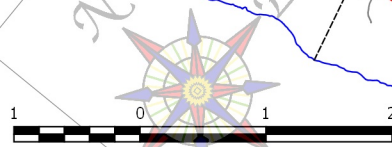
## Municipality of LOON

**NOTES:**

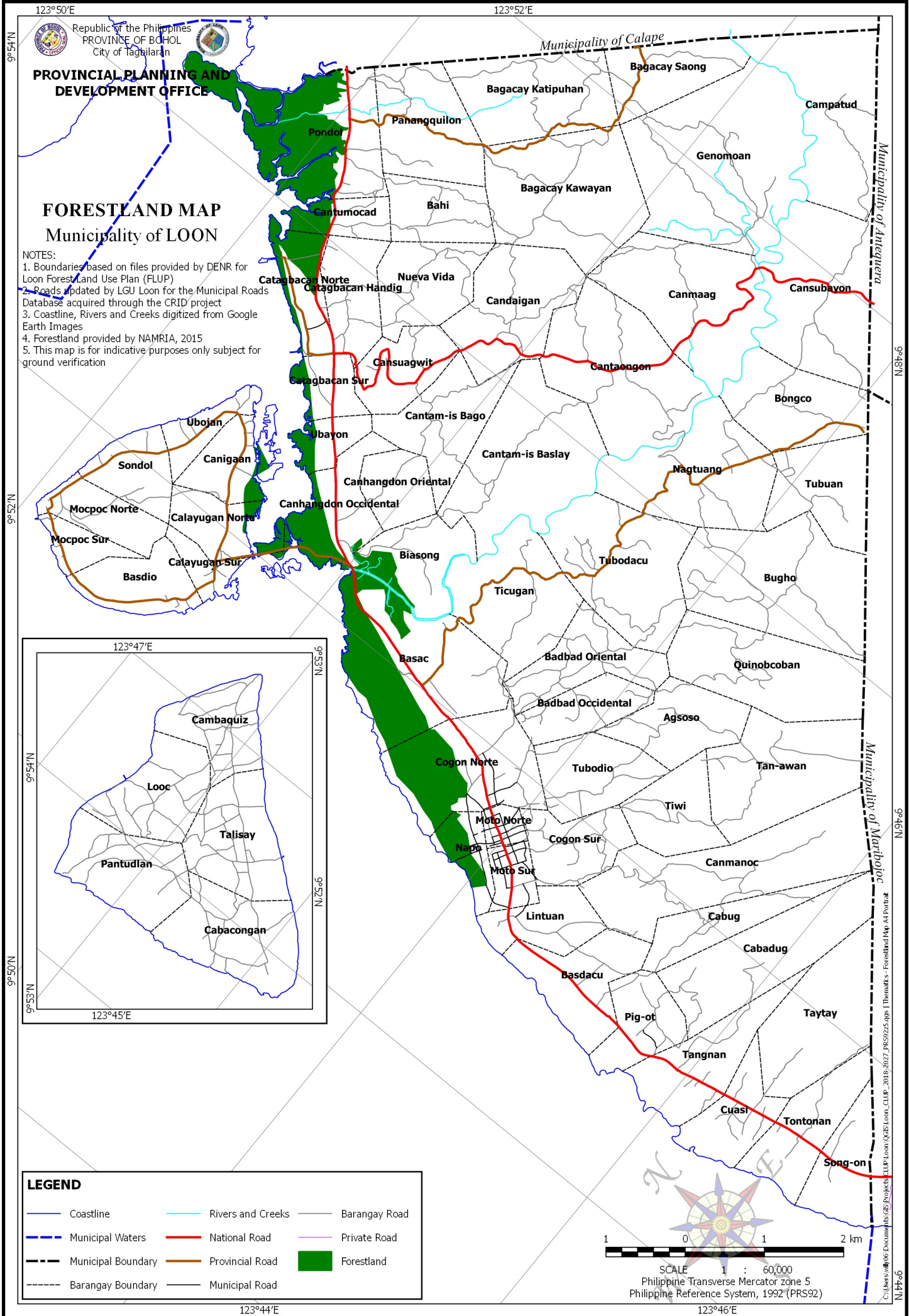
1. Boundaries based on files provided by DENR for Loon Forest Land Use Plan (FLUP)
2. Roads updated by LGU Loon for the Municipal Roads Database acquired through the CRID project
3. Coastline, Rivers and Creeks digitized from Google Earth Images
4. Forestland provided by NAMRIA, 2015
5. This map is for indicative purposes only subject for ground verification



LEGEND					
	Coastline		Rivers and Creeks		Barangay Road
	Municipal Waters		National Road		Private Road
	Municipal Boundary		Provincial Road		Forestland
	Barangay Boundary		Municipal Road		



SCALE 1 : 60,000  
Philippine Transverse Mercator zone 5  
Philippine Reference System, 1992 (PRS92)



123°44'E

123°46'E

9°54'N  
9°52'N  
9°50'N  
9°53'N  
9°51'N  
9°49'N

123°50'E  
123°52'E  
123°47'E  
123°45'E  
123°44'E  
123°46'E

C:\Users\w\Documents\GIS\Projects\FLUP\Loon\QGIS\Loon\_GLUP\_2016-2027\_PRES92.dwg | TheMapas - Forestland Map of Bohol