

124°00'00"E 124°01'30"E 124°03'00"E 124°04'30"E

9°48'00"N  
9°46'30"N  
9°45'00"N  
9°43'30"N  
9°42'00"N  
9°40'30"N

9°48'00"N  
9°46'30"N  
9°45'00"N  
9°43'30"N  
9°42'00"N  
9°40'30"N

### LEGEND

#### Boundaries

- Municipal Boundary
- - - - Barangay Boundary

#### Roads

- Provincial Road
- Municipal Road
- Barangay Road

#### HHs - Rain-Induced Landslide

- ★ Very High Susceptibility
- High Susceptibility
- ◆ Moderate Susceptibility
- Low Susceptibility



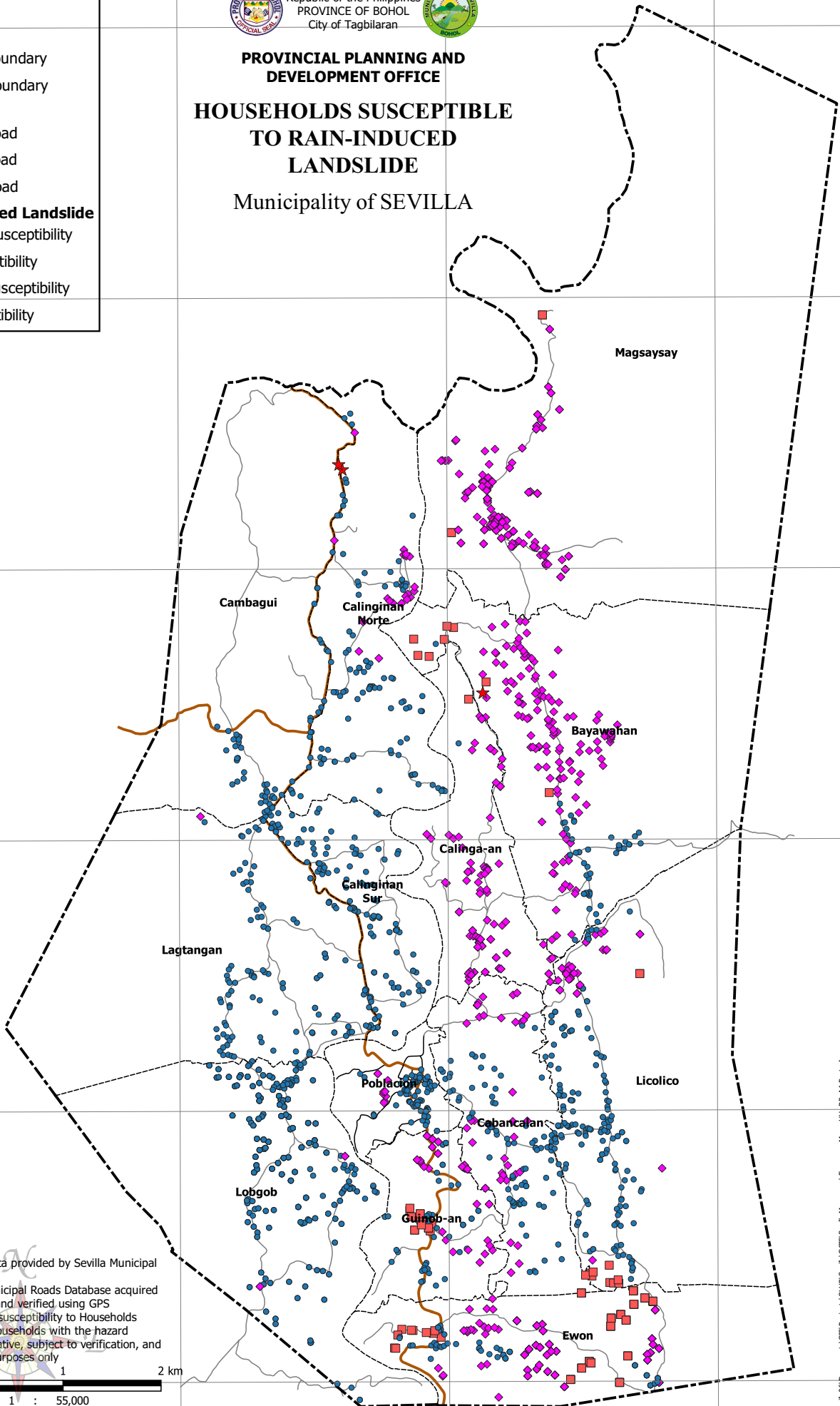
Republic of the Philippines  
PROVINCE OF BOHOL  
City of Tagbilaran



**PROVINCIAL PLANNING AND  
DEVELOPMENT OFFICE**

**HOUSEHOLDS SUSCEPTIBLE  
TO RAIN-INDUCED  
LANDSLIDE**

Municipality of SEVILLA



#### Notes:

1. Boundaries based on data provided by Sevilla Municipal Assessor's Office
2. Roads based on the Municipal Roads Database acquired through the CRID Project and verified using GPS
3. Rain-Induced Landslide susceptibility to Households generated by overlaying Households with the hazard
4. This map is not authoritative, subject to verification, and to be used for indicative purposes only



SCALE 1 : 55,000  
Universal Transverse Mercator (UTM) zone 51 North  
World Geodetic System, 1984 (WGS84)

124°00'00"E 124°01'30"E 124°03'00"E 124°04'30"E