

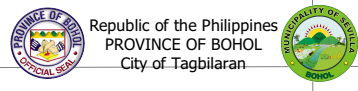
124°00'00"E 124°01'30"E 124°03'00"E 124°04'30"E

9°48'00"N  
9°46'30"N  
9°45'00"N  
9°43'30"N  
9°42'00"N  
9°40'30"N

9°48'00"N  
9°46'30"N  
9°45'00"N  
9°43'30"N  
9°42'00"N  
9°40'30"N

# LEGEND

Boundaries	
	Municipal Boundary
	Barangay Boundary
Roads	
	Provincial Road
	Municipal Road
	Barangay Road
Earthquake-Induced Landslide	
	High Susceptibility
	Moderate Susceptibility
	Low Susceptibility

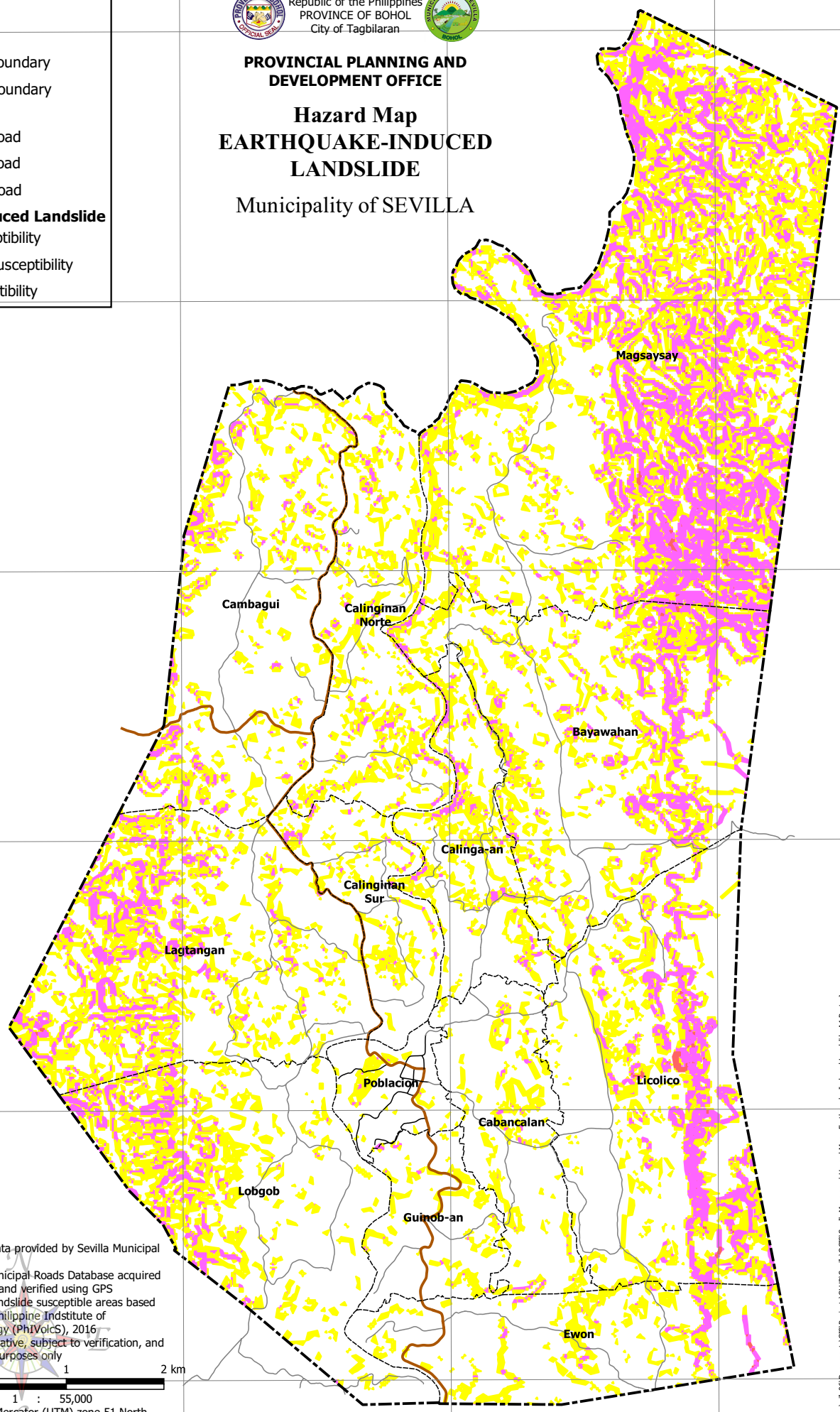


Republic of the Philippines  
 PROVINCE OF BOHOL  
 City of Tagbilaran

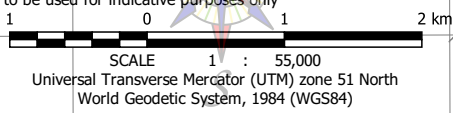
**PROVINCIAL PLANNING AND  
 DEVELOPMENT OFFICE**

**Hazard Map  
 EARTHQUAKE-INDUCED  
 LANDSLIDE**

Municipality of SEVILLA



- Notes:
1. Boundaries based on data provided by Sevilla Municipal Assessor's Office
  2. Roads based on the Municipal Roads Database acquired through the CRID Project and verified using GPS
  3. Earthquake-Induced Landslide susceptible areas based on data provided by the Philippine Institute of Volcanology and Seismology (PHIVOLCS), 2016
  4. This map is not authoritative, subject to verification, and to be used for indicative purposes only



124°00'00"E 124°01'30"E 124°03'00"E 124°04'30"E