

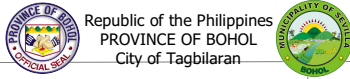
124°00'00"E 124°01'30"E 124°03'00"E 124°04'30"E

9°48'00"N
9°46'30"N
9°45'00"N
9°43'30"N
9°42'00"N
9°40'30"N

9°48'00"N
9°46'30"N
9°45'00"N
9°43'30"N
9°42'00"N
9°40'30"N

LEGEND

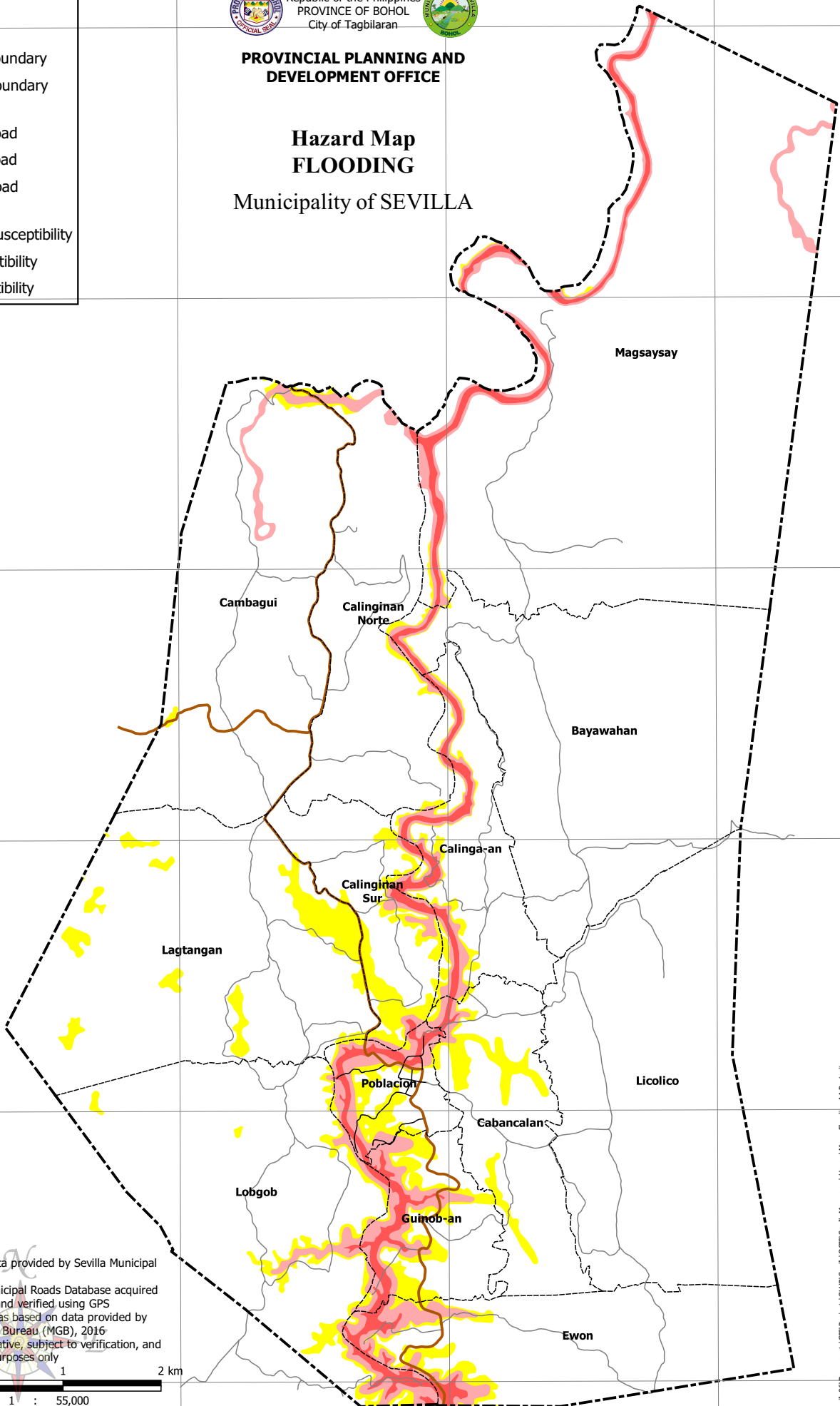
- Boundaries**
 - Municipal Boundary
 - - - - Barangay Boundary
- Roads**
 - Provincial Road
 - Municipal Road
 - Barangay Road
- Flooding**
 - Very High Susceptibility
 - High Susceptibility
 - Low Susceptibility



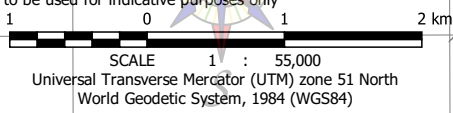
PROVINCIAL PLANNING AND DEVELOPMENT OFFICE

Hazard Map FLOODING

Municipality of SEVILLA



- Notes:
1. Boundaries based on data provided by Sevilla Municipal Assessor's Office
 2. Roads based on the Municipal Roads Database acquired through the CRID Project and verified using GPS
 3. Flooding susceptible areas based on data provided by the Mines and Geosciences Bureau (MGB), 2016
 4. This map is not authoritative, subject to verification, and to be used for indicative purposes only



124°00'00"E 124°01'30"E 124°03'00"E 124°04'30"E