

124°00'00"E 124°01'30"E 124°03'00"E 124°04'30"E

9°48'00"N
9°46'30"N
9°45'00"N
9°43'30"N
9°42'00"N
9°40'30"N

124°00'00"E
124°01'30"E
124°03'00"E
124°04'30"E

LEGEND

- Boundaries**
- Municipal Boundary
 - - - - Barangay Boundary
- Roads**
- Provincial Road
 - Municipal Road
 - Barangay Road
- Population 1995**
- Less than 500
 - 500 to 750
 - 750 to 1,000

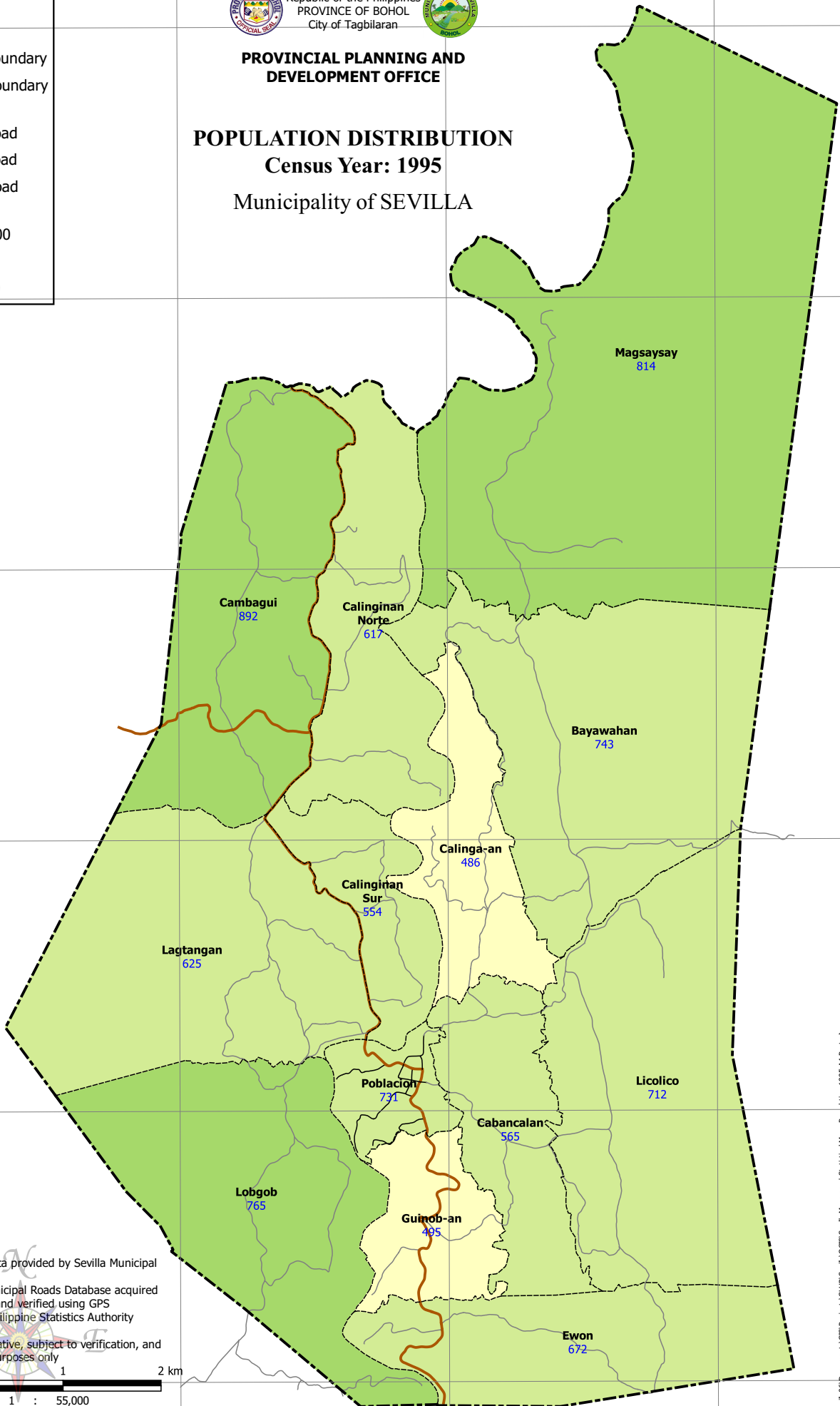


Republic of the Philippines
PROVINCE OF BOHOL
City of Tagbilaran



PROVINCIAL PLANNING AND DEVELOPMENT OFFICE

POPULATION DISTRIBUTION Census Year: 1995 Municipality of SEVILLA



- Notes:
1. Boundaries based on data provided by Sevilla Municipal Assessor's Office
 2. Roads based on the Municipal Roads Database acquired through the CRID Project and verified using GPS
 3. Population Data from Philippine Statistics Authority (PSA)
 4. This map is not authoritative, subject to verification, and to be used for indicative purposes only

