

124°00'00"E 124°01'30"E 124°03'00"E 124°04'30"E

9°48'00"N  
9°46'30"N  
9°45'00"N  
9°43'30"N  
9°42'00"N  
9°40'30"N

124°00'00"E  
124°01'30"E  
124°03'00"E  
124°04'30"E

# LEGEND

## Boundaries

- Municipal Boundary
- Barangay Boundary

## Roads

- Provincial Road
- Municipal Road
- Barangay Road

## Population Change 2000-2007

- Light Green: Increased by up to 100
- Dark Green: Increased by 100 to 200

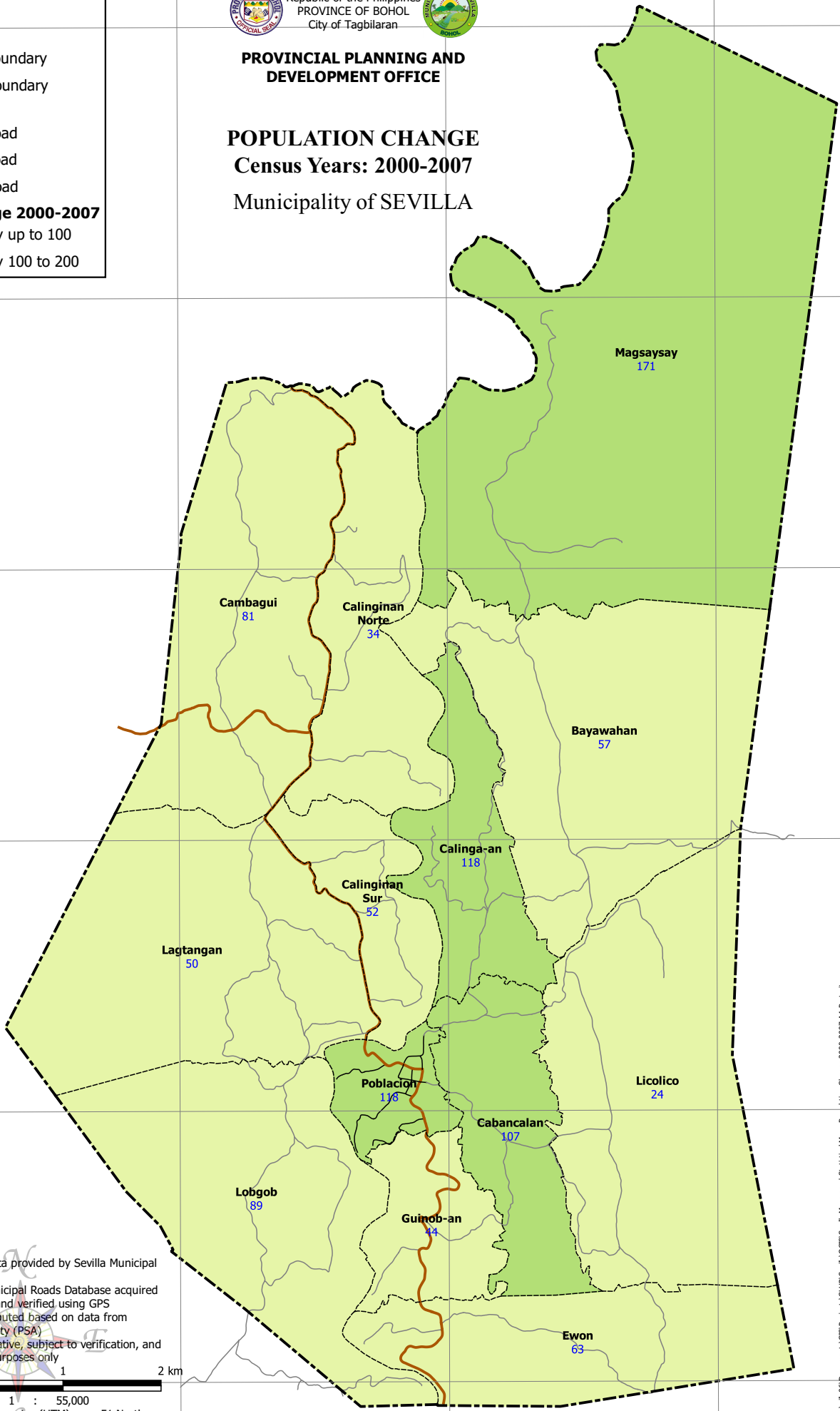


Republic of the Philippines  
PROVINCE OF BOHOL  
City of Tagbilaran



### PROVINCIAL PLANNING AND DEVELOPMENT OFFICE

## POPULATION CHANGE Census Years: 2000-2007 Municipality of SEVILLA



- Notes:
1. Boundaries based on data provided by Sevilla Municipal Assessor's Office
  2. Roads based on the Municipal Roads Database acquired through the CRID Project and verified using GPS
  3. Population Change computed based on data from Philippine Statistics Authority (PSA)
  4. This map is not authoritative, subject to verification, and to be used for indicative purposes only



SCALE 1 : 55,000  
 Universal Transverse Mercator (UTM) zone 51 North  
 World Geodetic System, 1984 (WGS84)