

124°00'00"E 124°01'30"E 124°03'00"E 124°04'30"E

9°48'00"N
9°46'30"N
9°45'00"N
9°43'30"N
9°42'00"N
9°40'30"N

124°00'00"E
124°01'30"E
124°03'00"E
124°04'30"E

LEGEND

Boundaries

- Municipal Boundary
- Barangay Boundary

Roads

- Provincial Road
- Municipal Road
- Barangay Road

Population Change 2007-2010

- Decreased by 100 to 200
- Decreased by up to 100
- Increased by up to 100

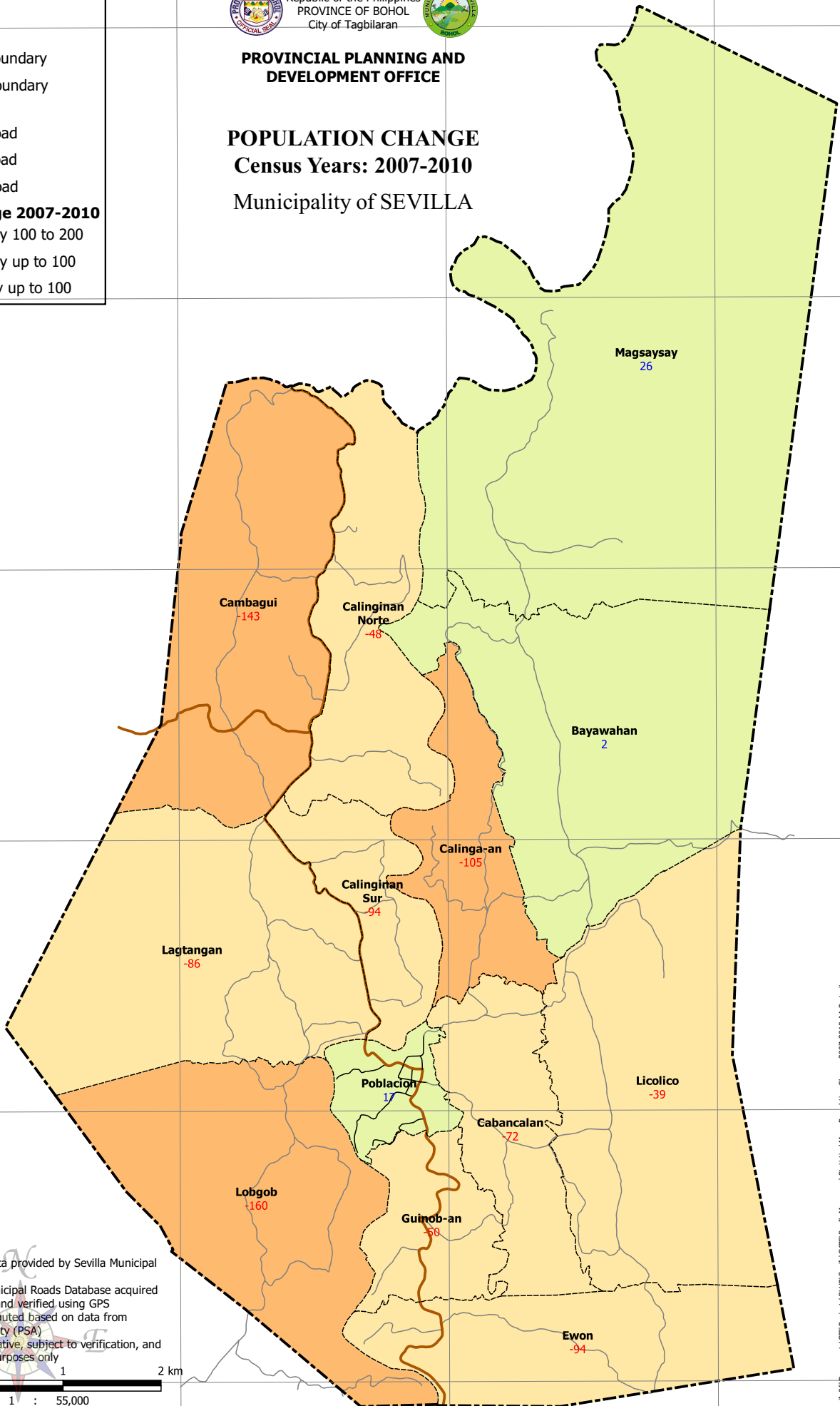


Republic of the Philippines
PROVINCE OF BOHOL
City of Tagbilaran



PROVINCIAL PLANNING AND DEVELOPMENT OFFICE

POPULATION CHANGE Census Years: 2007-2010 Municipality of SEVILLA



- Notes:
1. Boundaries based on data provided by Sevilla Municipal Assessor's Office
 2. Roads based on the Municipal Roads Database acquired through the CRID Project and verified using GPS
 3. Population Change computed based on data from Philippine Statistics Authority (PSA)
 4. This map is not authoritative, subject to verification, and to be used for indicative purposes only

